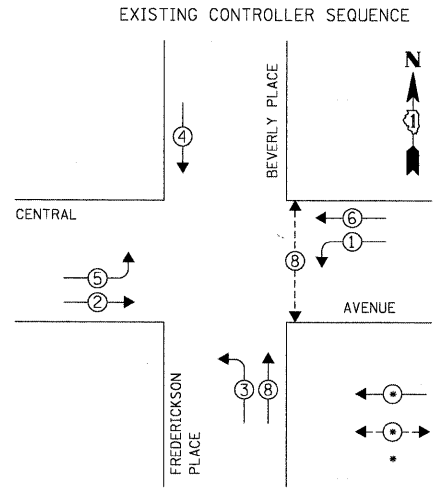
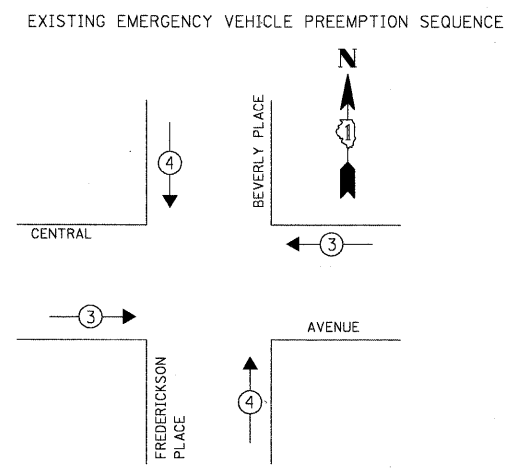


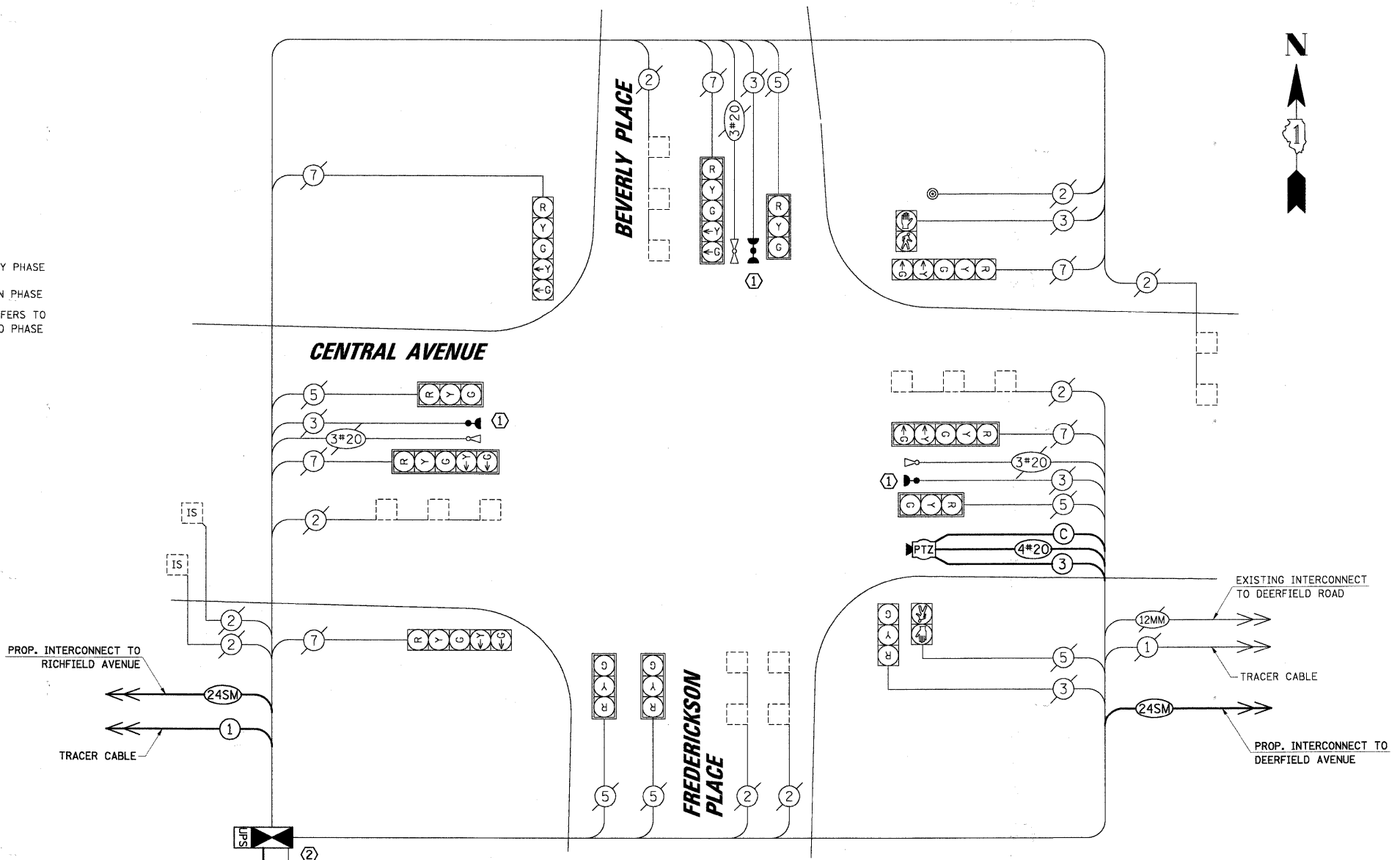
DATE: _____ BY: _____
 SURVEYED: _____ PLOTTED: _____ CHECKED: _____
 PLAN: _____ NOTE BOOK: _____
 NO. _____
CHRISTOPHER B. BURKE ENGINEERING LTD.
 9575 West Higgins Road, Suite 600
 Rosemont, Illinois 60018
 (847) 823-0500
 PROFILE: _____ SURVEYED: _____ PLOTTED: _____ CHECKED: _____
 NOTE BOOK: _____
 NO. _____
 STRUCTURE: _____ NOTATIONS: _____



EXISTING PHASE DESIGNATION DIAGRAM



EXISTING EMERGENCY VEHICLE PREEMPTORS		
EMERGENCY VEHICLE PREEMPTOR	3	4
MOVEMENT	← →	↑ ↓



CABLE PLAN

L.C.D.O.T. TRAFFIC SIGNAL INSTALLATION ELECTRICAL SERVICE REQUIREMENTS					TOTAL WATTAGE
TYPE	NO. OF LAMPS	WATTAGE X INCAND.	LED	% OPERATION	
SIGNAL (RED)	12	10	0.50		60.0
(YELLOW)	12	19	0.10		22.8
(GREEN)	12	11	0.40		52.8
ARROW	12	9	0.10		10.8
PED. SIGNAL	2	9	1.00		18.0
CONTROLLER	1	100	1.00		100.0
LUMINAIRE	-	250	0.50		-
L.E.D. ST. NAME SIGN	-	64	0.50		-
VIDEO SYSTEM	1	150	1.00		150.0
BATTERY BACKUP	1	25	1.00		25.0
TOTAL =					439.40

ENERGY COSTS TO: TOTAL = 439.40
CITY OF HIGHLAND PARK
 1707 ST. JOHNS AVENUE
 HIGHLAND PARK, IL 60035-3593
 ENERGY SUPPLY: CONTACT: JEAN WILL
 PHONE: (847) 816-5459
 COMPANY: COMED

THE FOLLOWING ITEMS SHALL BE REMOVED BY THE CONTRACTOR AND SHALL BE DISPOSED OF BY THEM OUTSIDE THE RIGHT-OF-WAY AT THEIR EXPENSE. THE SALVAGE VALUE OF THE REMOVED EQUIPMENT SHALL BE REFLECTED IN THE CONTRACT BID PRICE.

- 1 EACH MASTER CONTROLLER
- 1 EACH CONTROLLER AND CABINET (COMPLETE)
- 1 EACH SERVICE INSTALLATION

CONSTRUCTION NOTES:

- ① ALL EXISTING CONFIRMATION BEACONS SHALL BE RETROFITTED WITH LED INDICATIONS. THIS WORK SHALL BE INCLUDED IN THE COST FOR THE PAY ITEM: UNINTERRUPTIBLE POWER SUPPLY.
- ② RELOCATE EXISTING LIGHT DETECTOR AMPLIFIER TO NEW CONTROLLER CABINET.
- ③ THE TRAFFIC SIGNAL CONTROLLER SHALL BE NTCIP COMPATIBLE.
- ④ INSTALL NEW POLE MOUNT SERVICE INSTALLATION. INSTALL SERVICE GROUND CABLE IN EXISTING CONDUIT.
- ⑤ INSTALL NEW PTZ CAMERA TO NEW CAMERA MOUNTING ASSEMBLY ON EXISTING SIGNAL MAST ARM.

SCHEDULE OF QUANTITIES		
ITEM	UNIT	TOTAL
MAINTENANCE OF EXISTING TRAFFIC SIGNAL INSTALLATION	EACH	1
FULL-ACTUATED CONTROLLER AND TYPE IV CABINET, SPECIAL	EACH	1
DRILL EXISTING HANDHOLE	EACH	1
RELOCATE EXISTING EMERGENCY VEHICLE PRIORITY SYSTEM, PHASING UNIT	EACH	1
REMOVE EXISTING TRAFFIC SIGNAL EQUIPMENT	EACH	1
CAMERA MOUNTING ASSEMBLY	EACH	1
SERVICE INSTALLATION - POLE MOUNTED	EACH	1
UNINTERRUPTIBLE POWER SUPPLY	EACH	1
REMOTE-CONTROLLED VIDEO SYSTEM	EACH	1
LAYER II (DATALINK) SWITCH	EACH	1
VIDEO ENCODER	EACH	1
INDUCTIVE LOOP DETECTOR	EACH	8
ELECTRIC CABLE IN CONDUIT, GROUND NO. 6 1C	FOOT	38
ELECTRIC CABLE IN CONDUIT, SIGNAL NO. 14 3C	FOOT	184
ELECTRIC CABLE IN CONDUIT, COAXIAL	FOOT	184
ELECTRIC CABLE IN CONDUIT, 4/C # 20, VIDEO	FOOT	184

NOTE:
 THE TRAFFIC SIGNAL CONTROLLER EQUIPMENT FOR THIS PROJECT SHALL BE "EAGLE" TO MATCH THE EXISTING ADJACENT SYSTEM.

FILE NAME = N:\LCDOT\1898487\Traffic\CAB\Central-Beverly.dwg	USER NAME = FBARISO	DESIGNED - ABR	REVISED -
		DRAWN - FPB / FCP	REVISED -
		CHECKED - MJT	REVISED -
		DATE - APRIL 30, 2010	REVISED -

STATE OF ILLINOIS
 DEPARTMENT OF TRANSPORTATION

SCHEDULE OF QUANTITIES, CABLE PLAN, PHASE DESIGNATION DIAGRAM AND EMERGENCY VEHICLE PREEMPTION SEQUENCE
 CENTRAL AVENUE AND BEVERLY PLACE / FREDERICKSON PLACE
 SCALE: NOT TO SCALE | SHEET NO. -- OF -- SHEETS | STA. -- TO STA. --

F.A.P. RTE.	SECTION	COUNTY	TOTAL SHEETS	SHEET NO.
	06-00924-00-TL	LAKE	76	36
CONTRACT NO. 63485			ILLINOIS FED. AID PROJECT	