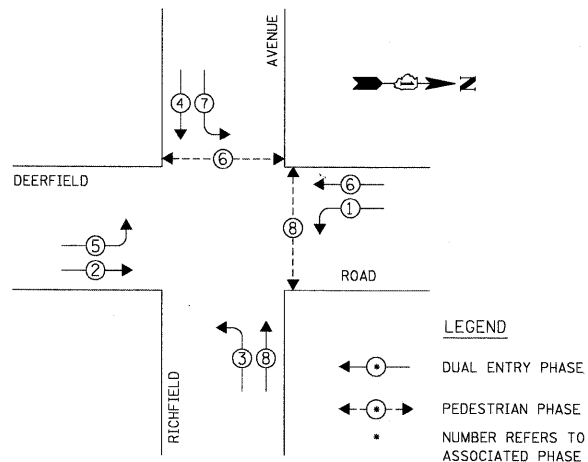


DATE: \_\_\_\_\_ BY: \_\_\_\_\_  
 SURVEYED: \_\_\_\_\_ PLOTTED: \_\_\_\_\_ CHECKED: \_\_\_\_\_  
 PLAN: \_\_\_\_\_ NOTE BOOK: \_\_\_\_\_  
 NO. \_\_\_\_\_ CAD FILE NAME: \_\_\_\_\_

**CHRISTOPHER B. BURKE ENGINEERING LTD.**  
 9575 West Higgins Road, Suite 600  
 Rosemont, Illinois 60018  
 (847) 823-0500

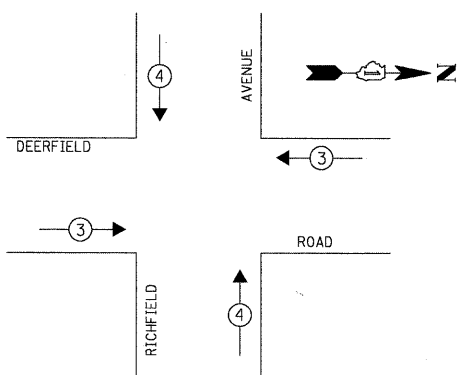
DATE: \_\_\_\_\_ BY: \_\_\_\_\_  
 SURVEYED: \_\_\_\_\_ PLOTTED: \_\_\_\_\_ CHECKED: \_\_\_\_\_  
 PROF. FILE: \_\_\_\_\_ NOTE BOOK: \_\_\_\_\_  
 NO. \_\_\_\_\_ STRUCTURE NOTATION: CPWD

**EXISTING CONTROLLER SEQUENCE**



**EXISTING PHASE DESIGNATION DIAGRAM**

**EMERGENCY VEHICLE PREEMPTION SEQUENCE**



**EXISTING EMERGENCY VEHICLE PREEMPTORS**

EMERGENCY VEHICLE PREEMPTOR	3	4
MOVEMENT	← →	↑ ↓

**L.C.D.O.T. TRAFFIC SIGNAL INSTALLATION ELECTRICAL SERVICE REQUIREMENTS**

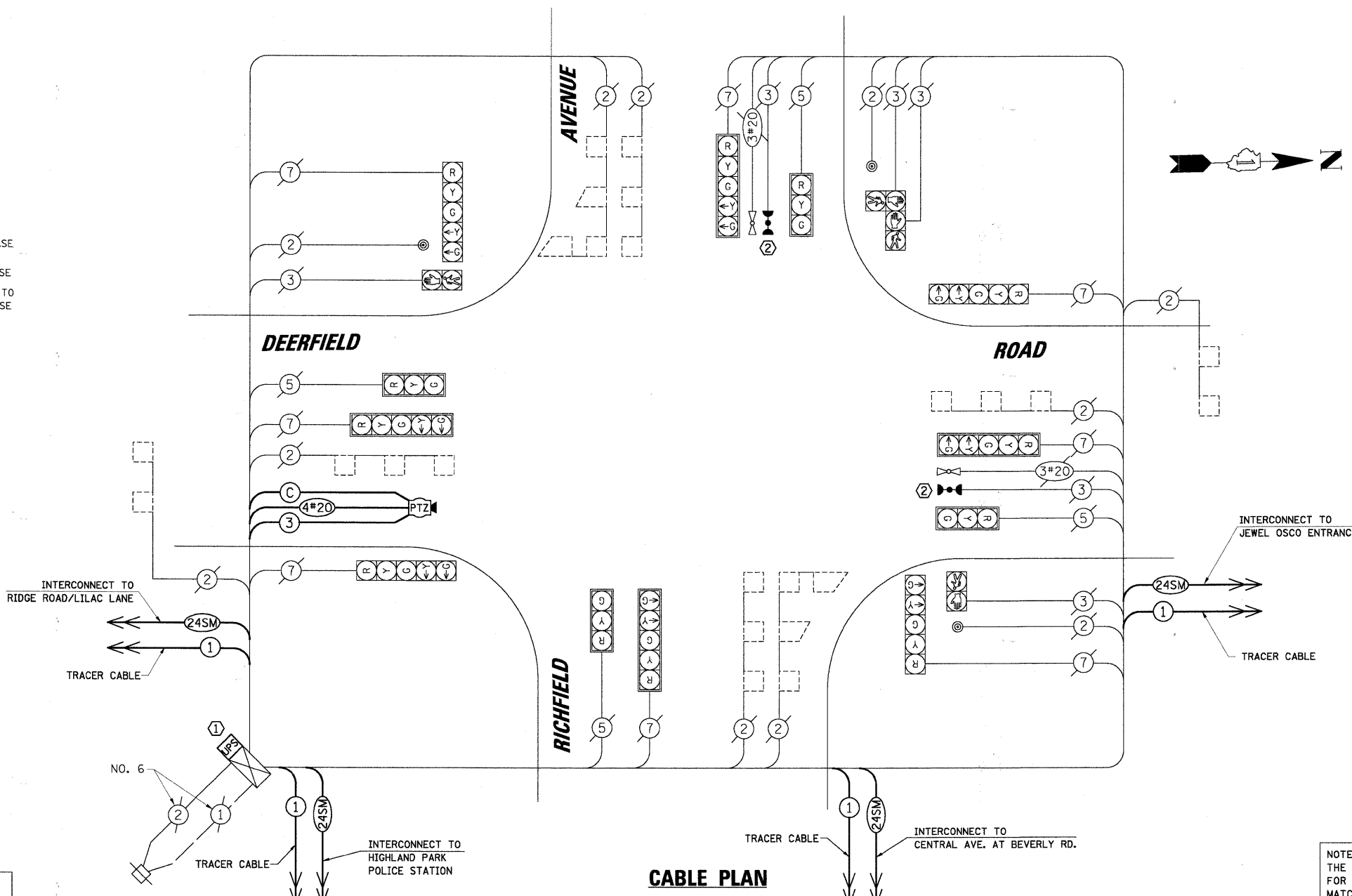
TYPE	NO. OF LAMPS	WATTAGE X INCAND. LED	% OPERATION	TOTAL WATTAGE
SIGNAL (RED)	12	10	0.50	60.0
(YELLOW)	12	19	0.10	22.8
(GREEN)	12	11	0.40	52.8
ARROW	16	9	0.10	14.4
PED. SIGNAL	4	9	1.00	36.0
CONTROLLER	1	100	1.00	100.0
LUMINAIRE	-	250	0.50	-
L.E.D. ST. NAME SIGN	-	64	0.50	-
VIDEO SYSTEM	1	150	1.00	150.0
BATTERY BACKUP	1	25	1.00	25.0

ENERGY COSTS TO: TOTAL = 461.0

**CITY OF HIGHLAND PARK**

1707 ST. JOHNS AVENUE  
 HIGHLAND PARK, IL 60035-3593

ENERGY SUPPLY: CONTACT: JEAN WILL  
 PHONE: (847) 816-5459  
 COMPANY: COMED



**CABLE PLAN**

THE FOLLOWING ITEMS SHALL BE REMOVED BY THE CONTRACTOR AND SHALL BE DISPOSED OF BY THEM OUTSIDE THE RIGHT-OF-WAY AT THEIR EXPENSE. THE SALVAGE VALUE OF THE REMOVED EQUIPMENT SHALL BE REFLECTED IN THE CONTRACT BID PRICE.

- 1 EACH CONTROLLER
- CONSTRUCTION NOTES:
- ① INSTALL UNINTERRUPTIBLE POWER SUPPLY (UPS).
  - ② ALL EXISTING CONFIRMATION BEACONS SHALL BE RETROFITTED WITH LED INDICATIONS. THIS WORK SHALL BE INCLUDED IN THE COST FOR THE PAY ITEM: UNINTERRUPTIBLE POWER SUPPLY.
  - ③ POWDER COAT CAMERA MOUNTING ASSEMBLY TO MATCH EXISTING MAST ARM. POWDER COATING SHALL BE INCLUDED IN THE COST FOR THE PAY ITEM: CAMERA MOUNTING ASSEMBLY, SPECIAL.
  - ④ THE TRAFFIC SIGNAL CONTROLLER SHALL BE NTCIP COMPATIBLE, SPECIAL.
  - ⑤ INSTALL NEW PTZ CAMERA TO NEW CAMERA MOUNTING ASSEMBLY, SPECIAL ON EXISTING SIGNAL MAST ARM.

NOTE: THE TRAFFIC SIGNAL CONTROLLER EQUIPMENT FOR THIS PROJECT SHALL BE "ECONOLITE" TO MATCH THE EXISTING ADJACENT SYSTEM.

**SCHEDULE OF QUANTITIES**

ITEM	UNIT	TOTAL
MAINTENANCE OF EXISTING TRAFFIC SIGNAL INSTALLATION	EACH	1
FULL-ACTUATED CONTROLLER IN EXISTING CABINET, SPECIAL	EACH	1
MODIFY EXISTING CONTROLLER CABINET	EACH	1
REMOVE EXISTING TRAFFIC SIGNAL EQUIPMENT	EACH	1
UNINTERRUPTIBLE POWER SUPPLY	EACH	1
REMOTE-CONTROLLED VIDEO SYSTEM	EACH	1
LAYER II (DATALINK) SWITCH	EACH	1
VIDEO ENCODER	EACH	1
CAMERA MOUNTING ASSEMBLY, SPECIAL	EACH	1
DRILL EXISTING HANDHOLE	EACH	3
ELECTRIC CABLE IN CONDUIT, SIGNAL NO. 14 3C	FOOT	80
ELECTRIC CABLE IN CONDUIT, COAXIAL	FOOT	80
ELECTRIC CABLE IN CONDUIT, 4/C # 20, VIDEO	FOOT	80