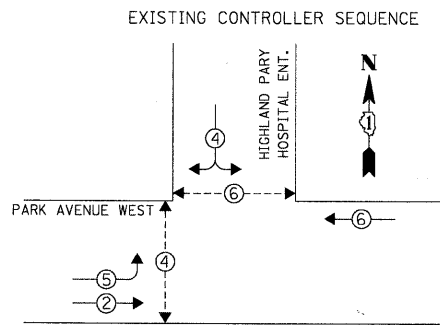


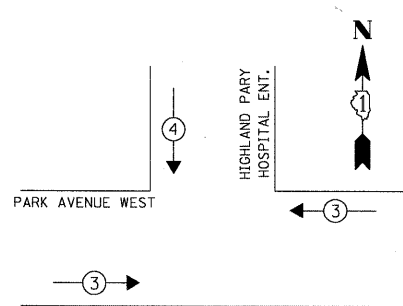
DATE: _____ BY: _____
 SURVEYED: _____ PLOTTED: _____
 NOTE BOOK: _____ CHECKED: _____
 NO.: _____ E.M. NOTED: _____
 STRUCTURE: _____ NOTATYS: _____
CHRISTOPHER B. BURKE ENGINEERING LTD.
 9575 West Higgins Road, Suite 600
 Rosemont, Illinois 60018
 (847) 823-0500



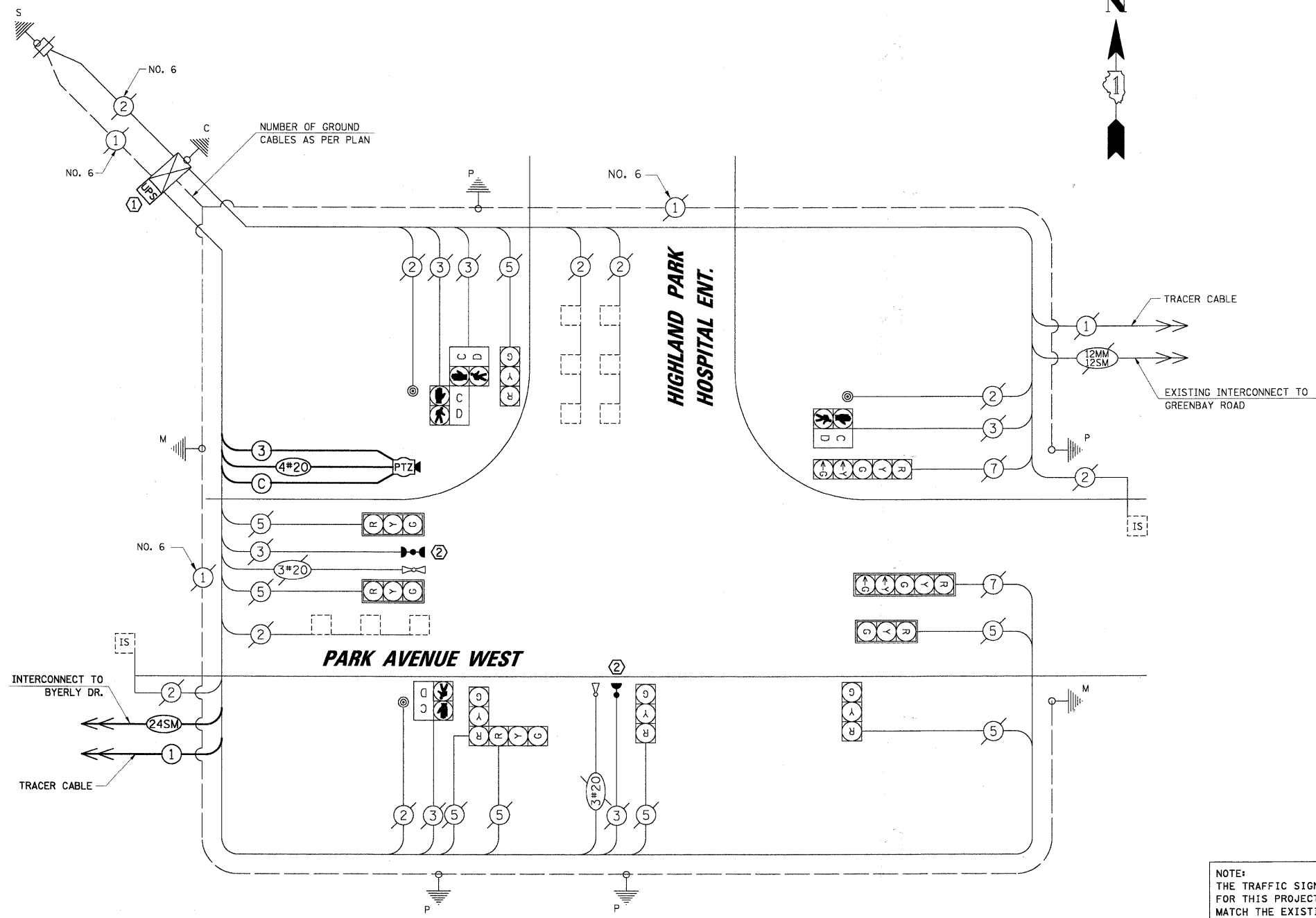
LEGEND
 ○ → ○ DUAL ENTRY PHASE
 ○ → ○ PEDESTRIAN PHASE
 * NUMBER REFERS TO ASSOCIATED PHASE

EXISTING PHASE DESIGNATION DIAGRAM

EXISTING EMERGENCY VEHICLE PREEMPTION SEQUENCE



EXISTING EMERGENCY VEHICLE PREEMPTORS		
EMERGENCY VEHICLE PREEMPTOR	3	4
MOVEMENT	← →	↓



NOTE:
 THE TRAFFIC SIGNAL CONTROLLER EQUIPMENT FOR THIS PROJECT SHALL BE "EAGLE" TO MATCH THE EXISTING ADJACENT SYSTEM.

CABLE PLAN

- CONSTRUCTION NOTES:**
- INSTALL UNINTERRUPTIBLE POWER SUPPLY (UPS).
 - ALL EXISTING CONFIRMATION BEACONS SHALL BE RETROFITTED WITH LED INDICATIONS. THIS WORK SHALL BE INCLUDED IN THE COST FOR THE PAY ITEM: UNINTERRUPTIBLE POWER SUPPLY.
 - PAINT CAMERA MOUNTING ASSEMBLY TO MATCH EXISTING MAST ARM. PAINTING SHALL BE INCLUDED IN THE COST FOR THE PAY ITEM: CAMERA MOUNTING ASSEMBLY, SPECIAL.
 - THE EXISTING CONTROLLER SOFTWARE SHALL BE UPGRADED TO NTCIP.
 - INSTALL NEW PTZ CAMERA TO NEW MOUNTING ASSEMBLY, SPECIAL ON EXISTING SIGNAL MAST ARM.

SCHEDULE OF QUANTITIES

ITEM	UNIT	TOTAL
MAINTENANCE OF EXISTING TRAFFIC SIGNAL INSTALLATION	EACH	1
MODIFY EXISTING CONTROLLER CABINET	EACH	1
UNINTERRUPTIBLE POWER SUPPLY	EACH	1
REMOTE-CONTROLLED VIDEO SYSTEM	EACH	1
LAYER II (DATALINK) SWITCH	EACH	1
VIDEO ENCODER	EACH	1
UPGRADE EXISTING CONTROLLER TO NTCIP (SPECIAL)	EACH	1
CAMERA MOUNTING ASSEMBLY, SPECIAL	EACH	1
TERMINATE FIBER IN CABINET	EACH	6
SPLICE FIBER IN CABINET	EACH	6
ELECTRIC CABLE IN CONDUIT, SIGNAL NO. 14 3C	FOOT	72
ELECTRIC CABLE IN CONDUIT, COAXIAL	FOOT	72
ELECTRIC CABLE IN CONDUIT, 4/C # 20, VIDEO	FOOT	72

L.C.D.O.T. TRAFFIC SIGNAL INSTALLATION ELECTRICAL SERVICE REQUIREMENTS					TOTAL WATTAGE
TYPE	NO. OF LAMPS	WATTAGE INCAND.	LED	% OPERATION	
SIGNAL (RED)	10		10	0.50	50.0
(YELLOW)	10		19	0.10	19.0
(GREEN)	10		11	0.40	44.0
ARROW	4		9	0.10	3.6
PED. SIGNAL	4		9	1.00	36.0
CONTROLLER	1		100	1.00	100.0
LUMINAIRE	-		250	0.50	-
L.E.D. ST. NAME SIGN	-		64	0.50	-
VIDEO SYSTEM	1		150	1.00	150.0
BATTERY BACKUP	1		25	1.00	25.0

ENERGY COSTS TO: TOTAL = 427.6
CITY OF HIGHLAND PARK
 1707 ST. JOHNS AVENUE
 HIGHLAND PARK, IL 60035-3593
 ENERGY SUPPLY: CONTACT: JEAN WILL
 PHONE: (847) 816-5459
 COMPANY: COMED

FILE NAME =	USER NAME = FBARTSD	DESIGNED - ABR	REVISED -
Na:\CDDT\0924077\Traffic\CAB_ParkAve-Hospital		DRAWN - FPB / FCP	REVISED -
		CHECKED - MJT	REVISED -
		DATE - APRIL 30, 2010	REVISED -

STATE OF ILLINOIS
DEPARTMENT OF TRANSPORTATION

SCHEDULE OF QUANTITIES, CABLE PLAN, PHASE DESIGNATION DIAGRAM AND EMERGENCY VEHICLE PREEMPTION SEQUENCE
PARK AVENUE WEST AND HIGHLAND PARK HOSPITAL ENT.

F.A.P. RTE.	SECTION	COUNTY	TOTAL SHEETS	SHEET NO.
	06-00924-00-TL	LAKE	76	43
CONTRACT NO. 63485			ILLINOIS FED. AID PROJECT	