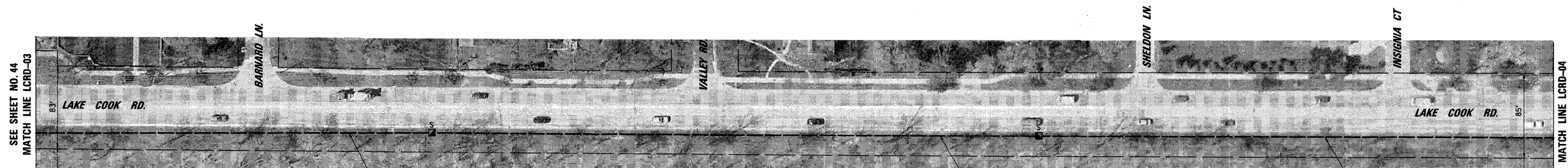


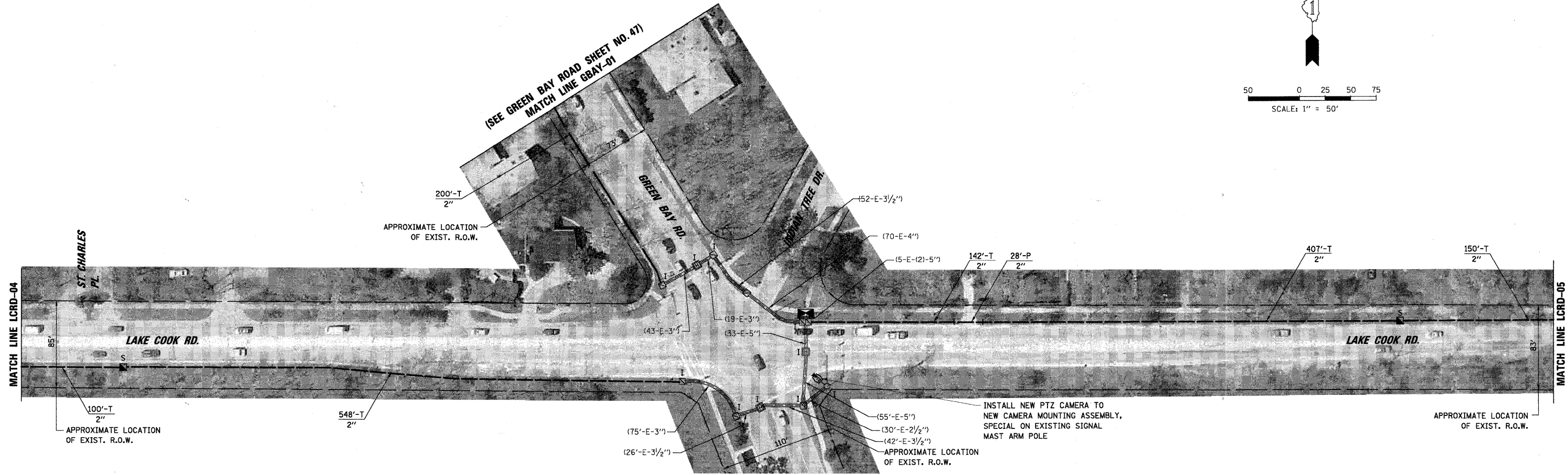
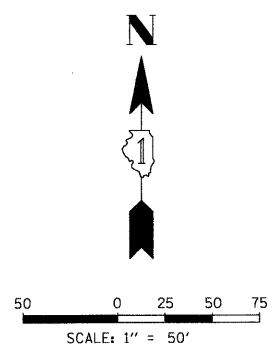
| | |
|----------|-----------|
| DATE | BY |
| SURVEYED | PLANNED |
| PLotted | NOTE BOOK |
| BY | NO. |
| BY | NO. |
| BY | NO. |

CHRISTOPHER B. BURKE ENGINEERING LTD.
 9575 West Higgins Road, Suite 600
 Rosemont, Illinois 60018
 (847) 823-0500

| | |
|----------|-----------|
| DATE | BY |
| SURVEYED | PLANNED |
| PLotted | NOTE BOOK |
| BY | NO. |
| BY | NO. |
| BY | NO. |



APPROXIMATE LOCATION OF EXIST. R.O.W. APPROXIMATE LOCATION OF EXIST. R.O.W.



APPROXIMATE LOCATION OF EXIST. R.O.W. APPROXIMATE LOCATION OF EXIST. R.O.W.

| | | | |
|---|---------------------|-----------------------|-----------|
| FILE NAME = | USER NAME = FBARISO | DESIGNED - ABR | REVISED - |
| N:\L\001\290487\Traffic\INT-02.LakeCook.dgn | | DRAWN - FPB / FCP | REVISED - |
| | | CHECKED - MJT | REVISED - |
| | | DATE - APRIL 30, 2010 | REVISED - |
| | | | |

**STATE OF ILLINOIS
 DEPARTMENT OF TRANSPORTATION**

**INTERCONNECT PLAN
 LAKE COOK ROAD
 FROM U.S. ROUTE 41 (SKOKIE HWY) NB OFF-RAMP TO SHERIDAN ROAD**

SCALE: 1" = 50' SHEET NO. 2 OF 3 SHEETS STA. -- TO STA. --

| | | | | |
|-------------|----------------|--------|--------------|---------------------------|
| F.A.P. RTE. | SECTION | COUNTY | TOTAL SHEETS | SHEET NO. |
| | 06-00924-00-TL | LAKE | 76 | 45 |
| | | | | CONTRACT NO. 63485 |
| | | | | ILLINOIS FED. AID PROJECT |