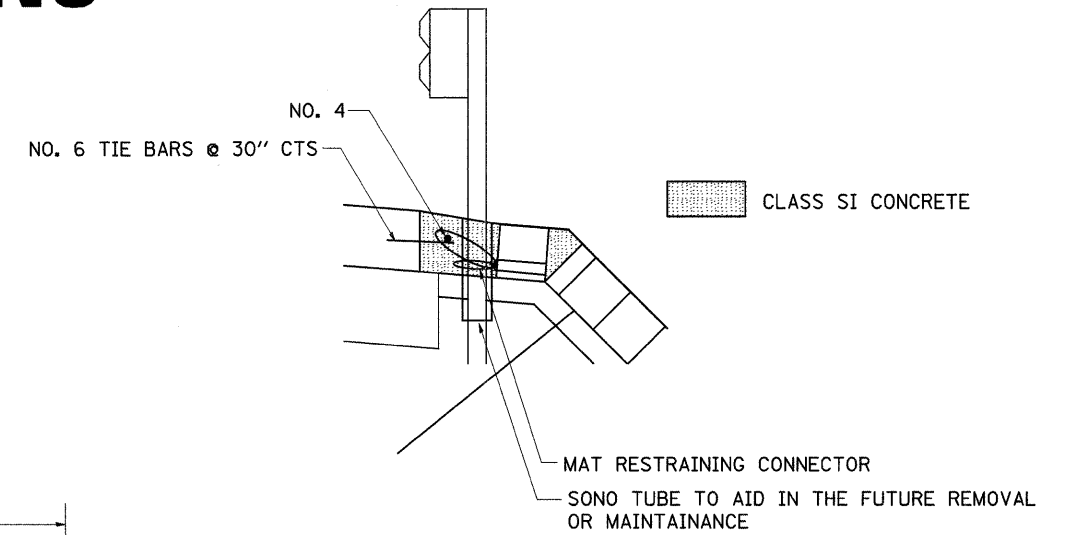


# TYPICAL SECTIONS

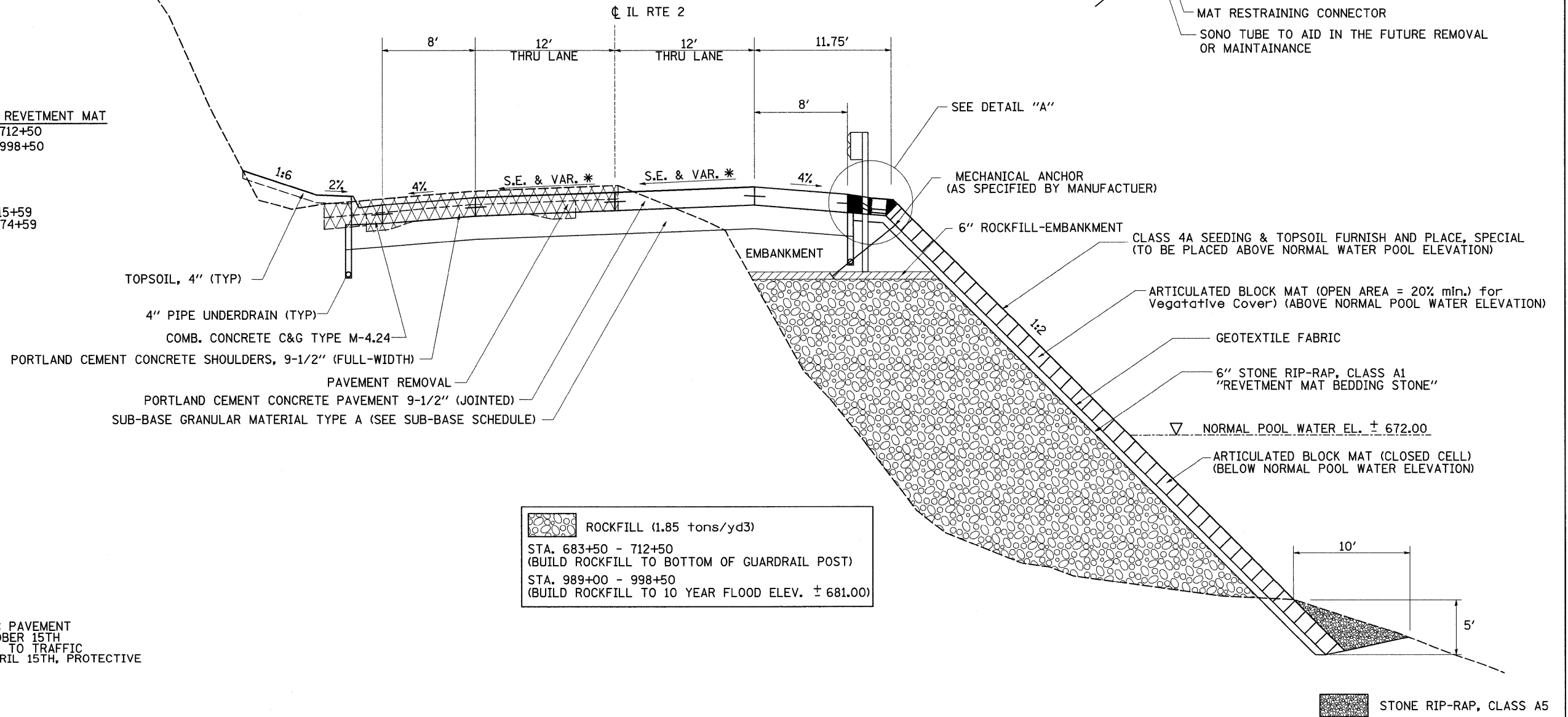
STA. 690+91 - 697+04 (S.E. = 1.9%)  
 STA. 864+77 - 874+61 (S.E. = 4.9%)  
 STA. 986+67 - 990+83 (S.E. = 5.4%)  
 STA. 990+83 - 1000+51 (S.E. = 3.1%)

DETAIL "A"



**ARTICULATED BLOCK REVETMENT MAT**  
 RT. STA. 683+50 - 712+50  
 RT. STA. 989+00 - 998+50

**CC&G, TYPE M-4.24**  
 LT STA. 680+51 - 715+59  
 LT STA. 863+00 - 874+59



**ROCKFILL (1.85 tons/yd3)**  
 STA. 683+50 - 712+50  
 (BUILD ROCKFILL TO BOTTOM OF GUARDRAIL POST)  
 STA. 989+00 - 998+50  
 (BUILD ROCKFILL TO 10 YEAR FLOOD ELEV. ± 681.00)

**PROTECTIVE COAT:**  
 IF CURB AND GUTTER OR PCC PAVEMENT  
 IS CONSTRUCTED AFTER OCTOBER 15TH  
 AND THE ROAD WILL BE OPEN TO TRAFFIC  
 PRIOR TO THE FOLLOWING APRIL 15TH, PROTECTIVE  
 COAT SHALL BE INSTALLED.

FILE NAME =	USER NAME = grantpm	DESIGNED -	REVISED -	<b>STATE OF ILLINOIS DEPARTMENT OF TRANSPORTATION</b>	<b>TYPICAL SECTIONS</b>	F.A. RTE.	SECTION	COUNTY	TOTAL SHEETS	SHEET NO.	
ct\pw_work\PIWIDOT\GRANTPM\dms31213\d06608typ.dgn	PLOT SCALE = 50,0000' / IN.	DRAWN -	REVISED -			742	37R-4	OGLE	867	18	
	PLOT DATE = Tue Mar 30 13:47:10 2010	CHECKED -	REVISED -			CONTRACT NO. 64E17					
		DATE -	REVISED -			ILLINOIS FED. AID PROJECT					
					SCALE:	SHEET NO.	OF	SHEETS	STA.	TO STA.	