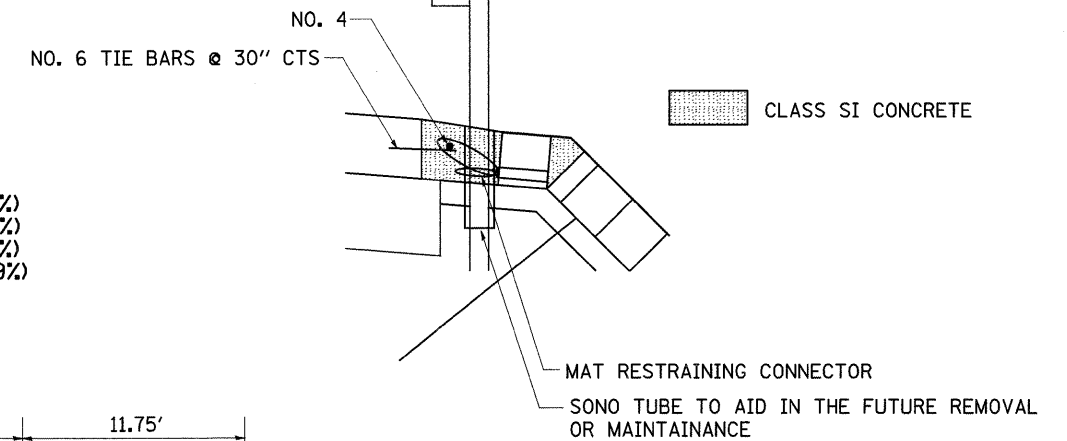


TYPICAL SECTIONS

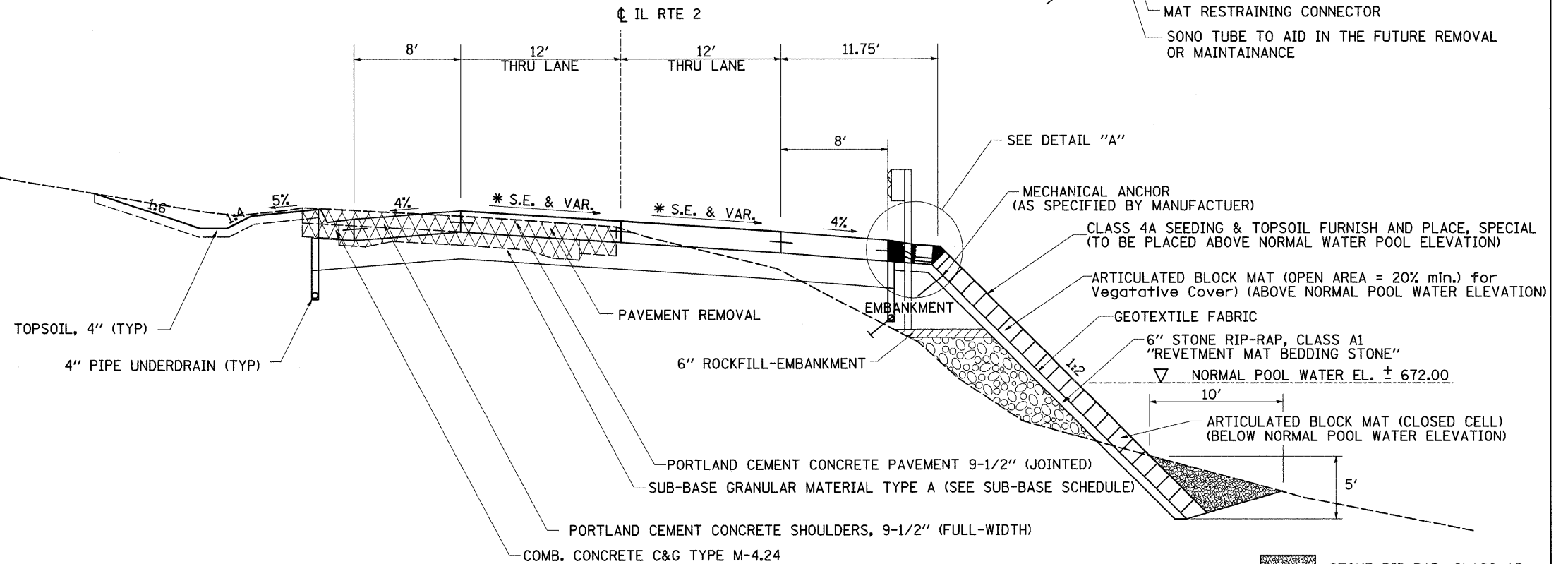
DETAIL "A"

STA. 697+04 - 709+61 (S.E. = 3.3%)
 STA. 737+56 - 749+09 (S.E. = 2.4%)
 STA. 875+24 - 878+72 (S.E. = 5.4%)
 STA. 1001+51 - 1002+58 (S.E. = 3.9%)



ARTICULATED BLOCK REVETMENT MAT
 RT. STA. 683+50 - 712+50

CC&G, TYPE M-4.24
 LT STA. 680+51 - 715+59
 LT STA. 726+50 - 751+50



STONE RIP-RAP, CLASS A5

ROCKFILL (1.85 tons/yd³)
 STA. 683+50 - 712+50
 (BUILD ROCKFILL TO BOTTOM OF GUARDRAIL POST)
 STA. 989+00 - 998+50
 (BUILD ROCKFILL TO 10 YEAR FLOOD ELEV. ± 681.00)

PROTECTIVE COAT:

IF CURB AND GUTTER OR PCC PAVEMENT IS CONSTRUCTED AFTER OCTOBER 15TH AND THE ROAD WILL BE OPEN TO TRAFFIC PRIOR TO THE FOLLOWING APRIL 15TH, PROTECTIVE COAT SHALL BE INSTALLED.

FILE NAME =	USER NAME = grantpm	DESIGNED -	REVISED -
cs:\pw_work\PIWIDOT\GRANTPM\dms31213\d06628.txdgn		DRAWN -	REVISED -
PLOT SCALE = 50.0000' / IN.		CHECKED -	REVISED -
PLOT DATE = Tue Mar 30 13:47:10 2010		DATE -	REVISED -

STATE OF ILLINOIS
 DEPARTMENT OF TRANSPORTATION

TYPICAL SECTIONS

SCALE: SHEET NO. OF SHEETS STA. TO STA.

F.A. RTE.	SECTION	COUNTY	TOTAL SHEETS	SHEET NO.
742	37R-4	OGLE	867	19
CONTRACT NO. 64E17			ILLINOIS FED. AID PROJECT	