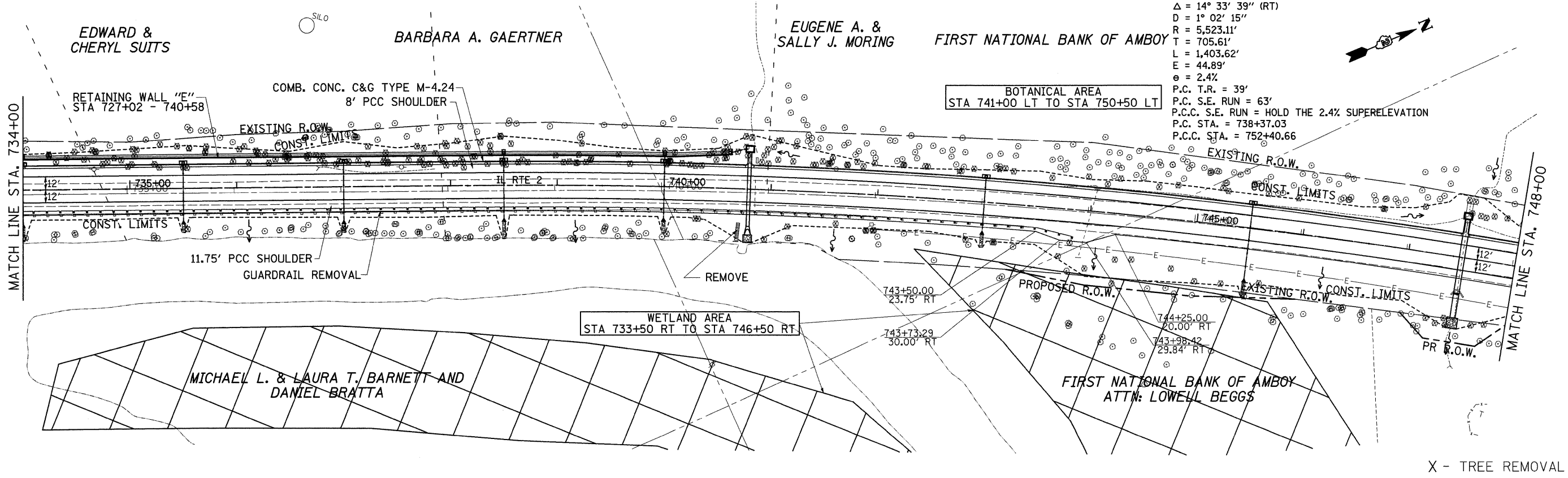
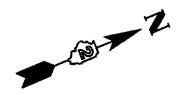


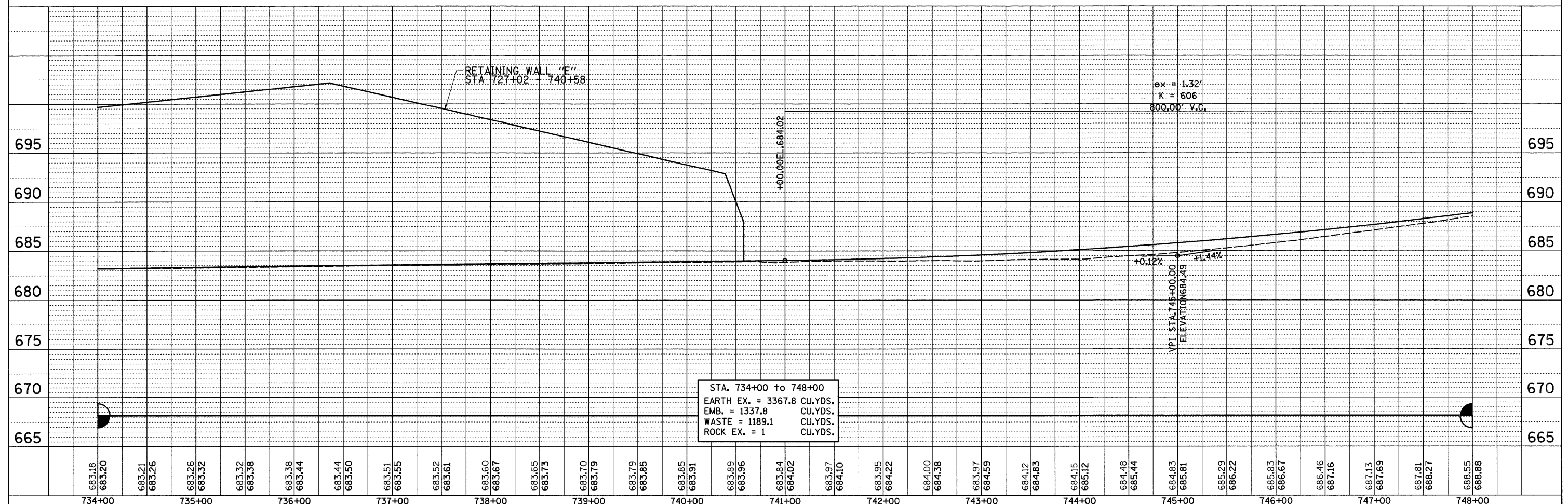
PLAN	SURVEYED	DATE
	PLOTTED	BY
	GRADES CHECKED	
	STRUCTURE NOTATIONS CHECKED	
	NO.	

PROFILE	SURVEYED	DATE
	PLOTTED	BY
	GRADES CHECKED	
	STRUCTURE NOTATIONS CHECKED	
	NO.	

IL RTE 2  
 PROP. CURVE 73230  
 PI STA. = 745+42.65  
 $\Delta = 14^\circ 33' 39''$  (RT)  
 $D = 1^\circ 02' 15''$   
 $R = 5,523.11'$   
 $T = 705.61'$   
 $L = 1,403.62'$   
 $E = 44.89'$   
 $e = 2.4\%$   
 P.C. T.R. = 39'  
 P.C. S.E. RUN = 63'  
 P.C.C. S.E. RUN = HOLD THE 2.4% SUPERELEVATION  
 P.C. STA. = 738+37.03  
 P.C.C. STA. = 752+40.66



X - TREE REMOVAL



FILE NAME =	USER NAME = grantpm	DESIGNED -	REVISED -	<b>STATE OF ILLINOIS DEPARTMENT OF TRANSPORTATION</b>	<b>IL 2</b>	F.A.P. RTE. 742	SECTION 37R-4	COUNTY OGLE	TOTAL SHEETS 867	SHEET NO. 93
CONTRACT NO. 64E17	SCALE:	SHEET NO. OF SHEETS	STA. TO STA.			FED. ROAD DIST. NO.	ILLINOIS FED. AID PROJECT			
PLOT SCALE = 50.0000' / IN.	CHECKED -	REVISED -								
PLOT DATE = Tue Mar 30 11:42:48 2010	DATE -	REVISED -								