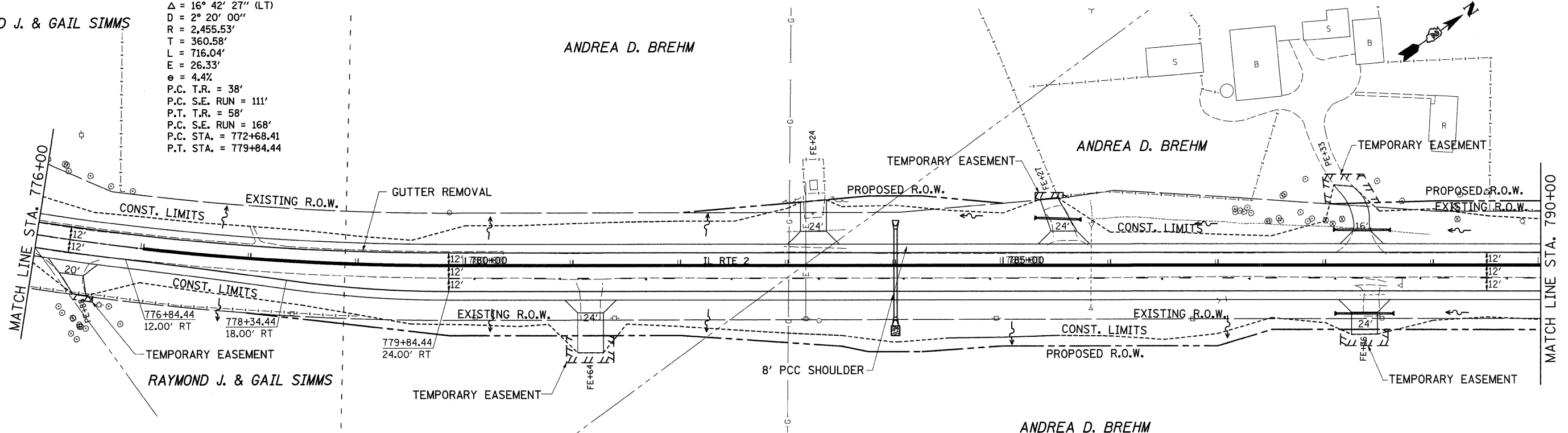


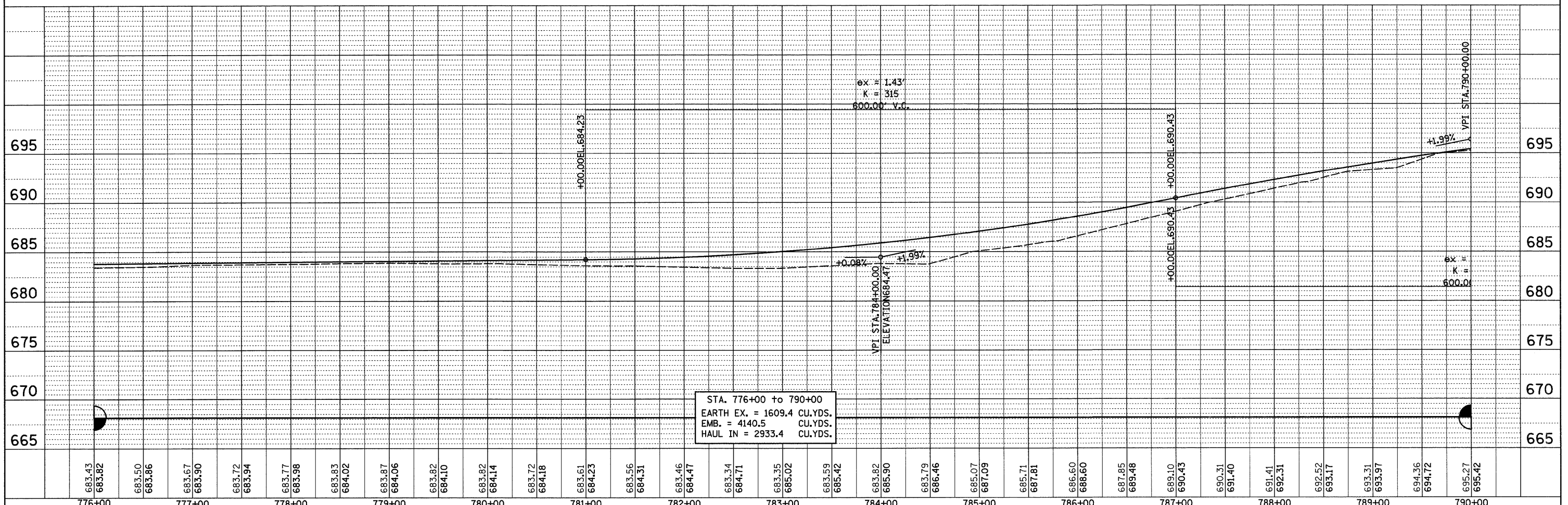
RAYMOND J. & GAIL SIMMS

IL RTE 2
 PROP. CURVE 70340
 PI STA. = 776+28.99
 $\Delta = 16^\circ 42' 27''$ (LT)
 $D = 2^\circ 20' 00''$
 $R = 2,455.53'$
 $T = 360.58'$
 $L = 716.04'$
 $E = 26.33'$
 $e = 4.4\%$
 P.C. T.R. = 38'
 P.C. S.E. RUN = 111'
 P.T. T.R. = 58'
 P.C. S.E. RUN = 168'
 P.C. STA. = 772+68.41
 P.T. STA. = 779+84.44

ANDREA D. BREHM



X - TREE REMOVAL



FILE NAME =	USER NAME = grantpm	DESIGNED -	REVISED -	STATE OF ILLINOIS DEPARTMENT OF TRANSPORTATION	IL 2	F.A.P. RTE. 742	SECTION 37R-4	COUNTY OGLE	TOTAL SHEETS 867	SHEET NO. 96	
ca:\pwwork\pwwid\GRANTPM\dms31213\d06680.plt		DRAWN -	REVISED -			SCALE:	SHEET NO. OF SHEETS	STA. TO STA.	FED. ROAD DIST. NO.	ILLINOIS FED. AID PROJECT	CONTRACT NO. 64E17
		CHECKED -	REVISED -								
		DATE -	REVISED -								

PLAN	SURVEYED	BY	DATE
NOTE BOOK	PLOTTED		
NO.	CHECKED		
	RT. OF WAY		
	CADD FILE NAME		

PROFILE	SURVEYED	BY	DATE
NOTE BOOK	PLOTTED		
NO.	CHECKED		
	STRUCTURE		
	NOTATIONS		