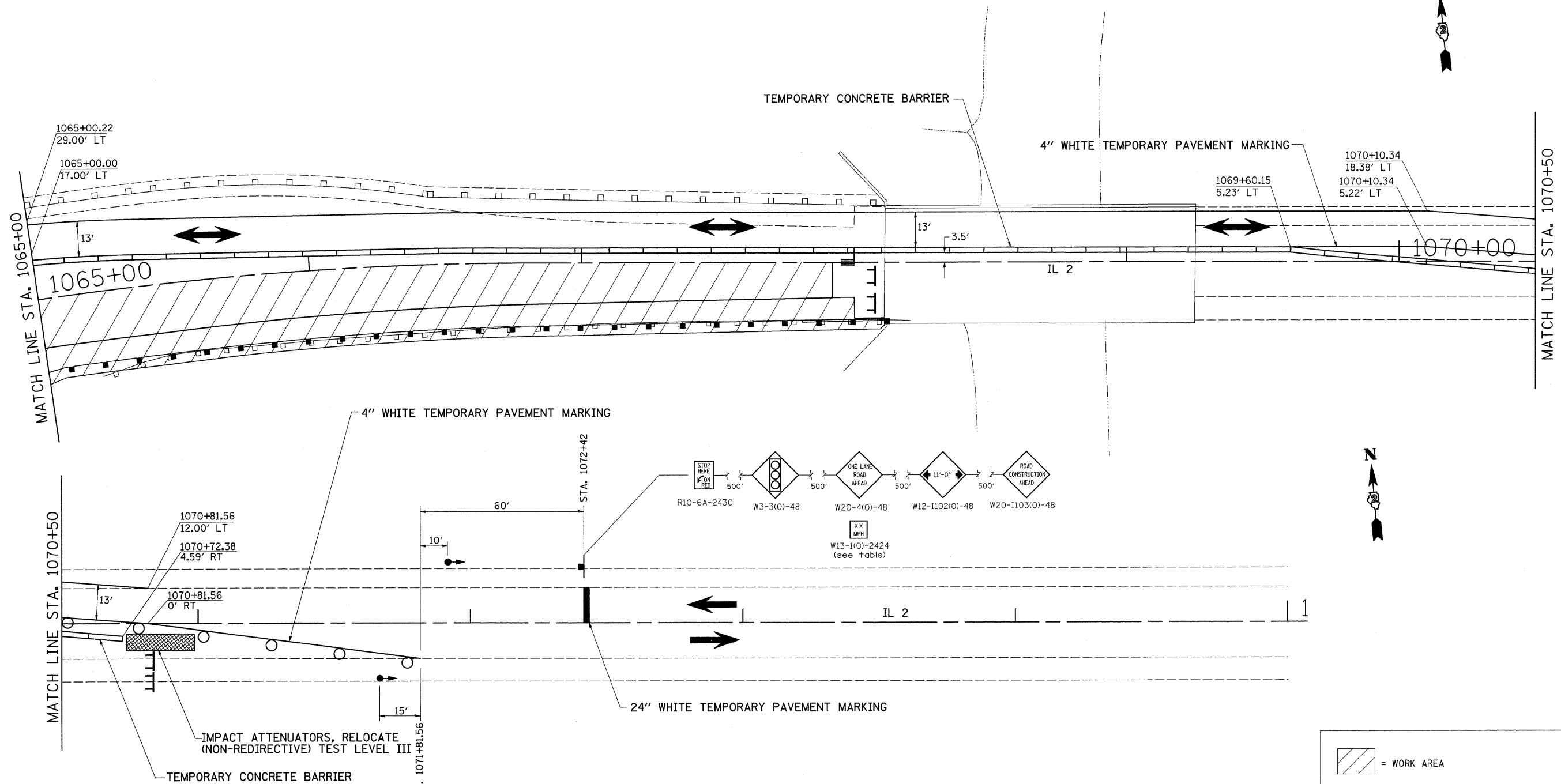


# STAGE 2



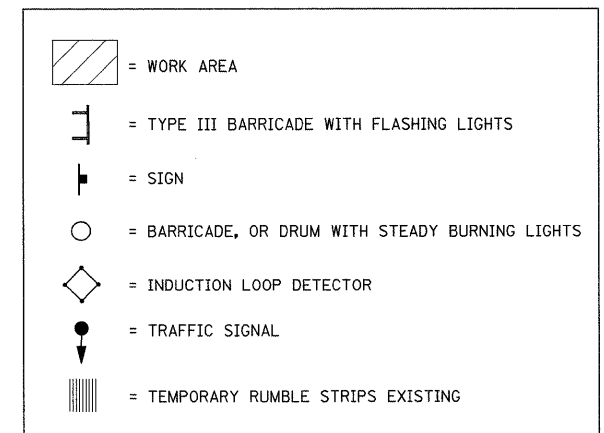
## STAGE 2 NOTES

1. USE STANDARD 701321. SEE STANDARDS FOR ADDITIONAL SIGNING AND DEVICES NOT SHOWN IN DETAILS.
2. REMOVAL OF GUARDRAIL @ RT STA. 1065+20 TO STA. 1068+20.
3. REMOVAL OF EXISTING PAVEMENT FROM NW QUAD IL 72 TO MILL CREEK BRIDGE.
4. CONSTRUCT SUB-BASE GRANULAR MATERIAL, TYPE "A"
5. CONSTRUCT PCC PAVEMENT (JOINTED) & PCC SHOULDERS
6. INSTALL STEEL PLATE BEAM GUARDRAIL, TYPE A RT STA. 1064+68 - 1068+13.

\* ACCESS FOR RESIDENTS ON IL 2 SOUTH TOWARD OREGON WILL BE CLOSED FOR THIS STAGE.

## STAGE 3 NOTES

1. REMOVAL OF ALL TEMPORARY PAINT PAVEMENT MARKINGS PLACED IN STAGE 2 (WORKZONE PAVEMENT MARKING REMOVAL)
2. PLACEMENT OF FINAL PAVEMENT MARKINGS IN THE RECONSTRUCTION AREA (URETHANE PAVEMENT MARKINGS) AND PREVIOUS CONFLICTING PAVEMENT MARKINGS REMOVED IN STAGE 1.



|   |                             |            |           |   |                |  |  |                    |           |           |                           |           |
|---|-----------------------------|------------|-----------|---|----------------|--|--|--------------------|-----------|-----------|---------------------------|-----------|
| FILE NAME =   | USER NAME = grantpm         | DESIGNED - | REVISED - | <b>STATE OF ILLINOIS<br/>DEPARTMENT OF TRANSPORTATION</b> | <b>STAGE 2</b> |  |  | F.A. RTE.          | SECTION   | COUNTY    | TOTAL SHEETS              | SHEET NO. |
| es:\pw\work\VP\WIDOT\GRANTPM\dms31213\006628stg.dgn | PLOT SCALE = 20.0000' / IN. | DRAWN -    | REVISED - |   |                |  |  | 742                | 37R-4     | OGLE      | 867                       | 158       |
| PLOT DATE = Tue Mar 30 11:22:30 2010                | DATE -                      | CHECKED -  | REVISED - |   |                |  |  | CONTRACT NO. 64E17 |           |           | ILLINOIS FED. AID PROJECT |           |
|   |                             |            |           |   |                |  |  | SCALE:             | SHEET NO. | OF SHEETS | STA.                      | TO STA.   |