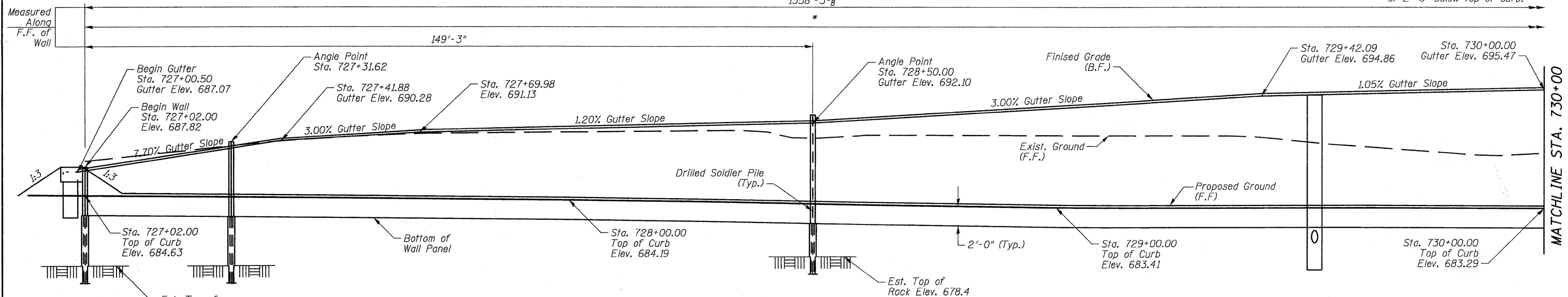


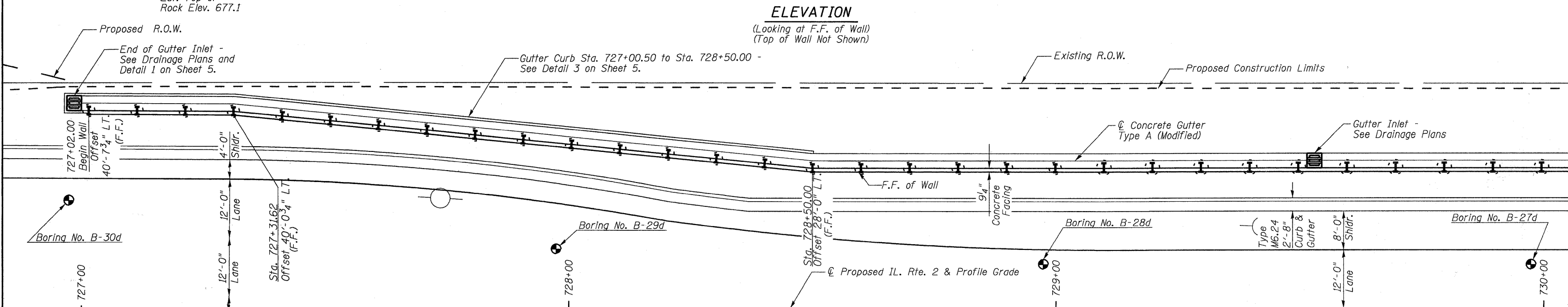
Benchmark: Guardrail Post, Existing Sta. 738+22.23, 18.81' Rt.,  
 Proposed Sta. 738+19.60, 23.70' Rt. Elev. 684.84  
 Existing Structure: None

STATE OF ILLINOIS  
 DEPARTMENT OF TRANSPORTATION  
 1358'-3 5/8"

\* For top of wall elevation, pile section, spacing and tip elevation see sheets 8-12 of 23. Bottom of wall panels shall be a minimum of 2'-0" below top of curb.



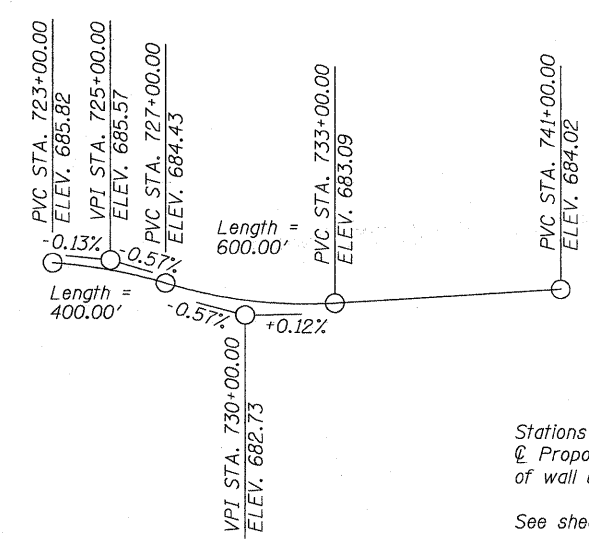
**ELEVATION**  
 (Looking at F.F. of Wall)  
 (Top of Wall Not Shown)



**PLAN**

**CURVE DATA**  
 (IL. Rte. 2)

P.I. STA = 727+71.83 Δ = 0° 43' 39" (RT.) D = 0° 42' 58" R = 8,000.00' T = 50.80' L = 101.59' E = 0.16'P.C. STA = 727+21.03 P.T. STA = 728+22.62	P.I. STA = 745+42.65 Δ = 14° 33' 39" (RT.) D = 1° 02' 15" R = 5,523.11' T = 705.61' L = 1,403.62' E = 44.89'P.C. STA = 738+37.03 P.T. STA = 752+40.66
---	--



**PROFILE GRADE**  
 (Along Proposed IL. Rte. 2)

**SHEET INDEX**

NO.	DESCRIPTION
1-5	GENERAL PLAN
6	GENERAL NOTES & TOTAL BILL OF MATERIALS
7	WALL SECTION
8-12	WALL PLAN
13	PANEL DETAILS
14	WALL DETAILS
15-23	BORING LOGS

**NOTES**

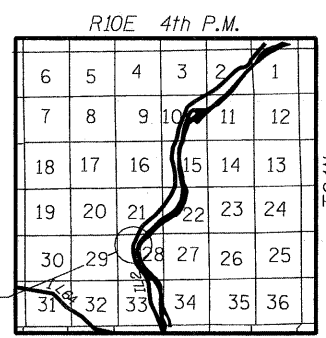
Stations and offsets are given from the Proposed IL. Rte. 2 at the front face of wall unless otherwise noted.  
 See sheet 6 of 23 for Bill of Materials.  
 F.F. = Front Face  
 B.F. = Back Face



David F. Maxwell, S.E.  
 Date: 3/17/10  
 My registration expires November 30, 2010.

**APPROVED**  
 FOR STRUCTURAL ADEQUACY ONLY  
 Ralph E. Anderson  
 ENGINEER OF BRIDGES AND STRUCTURES

**GENERAL PLAN & ELEVATION**  
 IL. RTE. 2  
 FAP 742 SECTION 37R-4  
 OGLE COUNTY  
 RETAINING WALL E  
 STA. 727+02.00 TO STA. 740+58.00  
 STRUCTURE NO. 071-7004



**LOCATION SKETCH**

DESIGNED JMW
CHECKED DFM
DRAWN CTH
CHECKED DFM

SHEET NO. 1	F.A.P. RTE.	SECTION	COUNTY	TOTAL SHEETS	SHEET NO.
23 SHEETS	742	37R-4	OGLE	867	213
CONTRACT NO. 64E17					
FED. ROAD DIST. NO. 7 ILLINOIS FED. AID PROJECT					

Howard R. Green Company