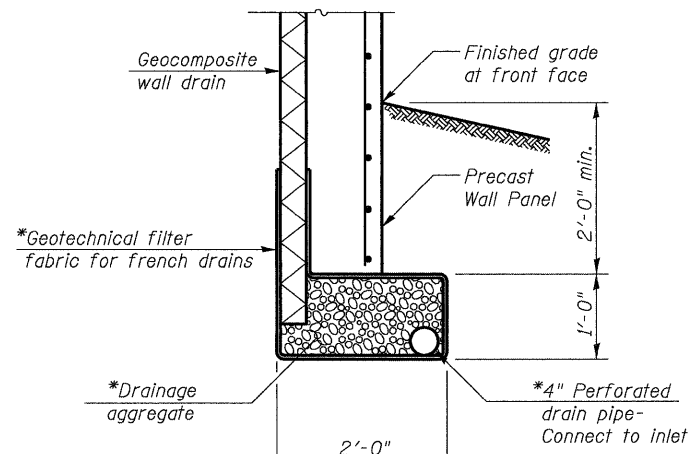
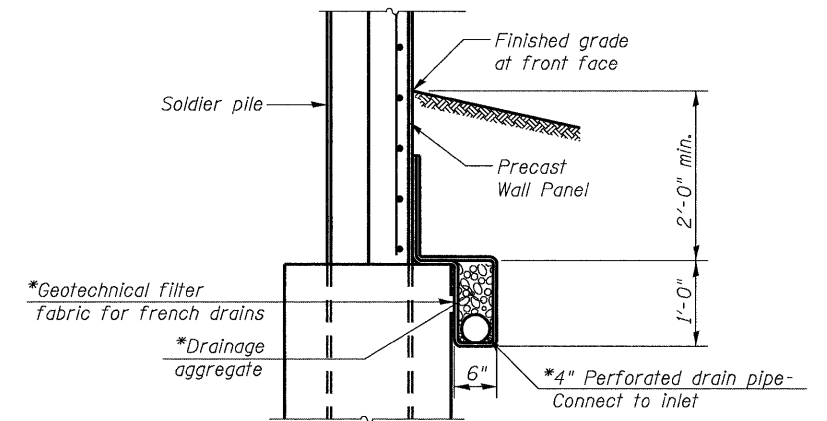


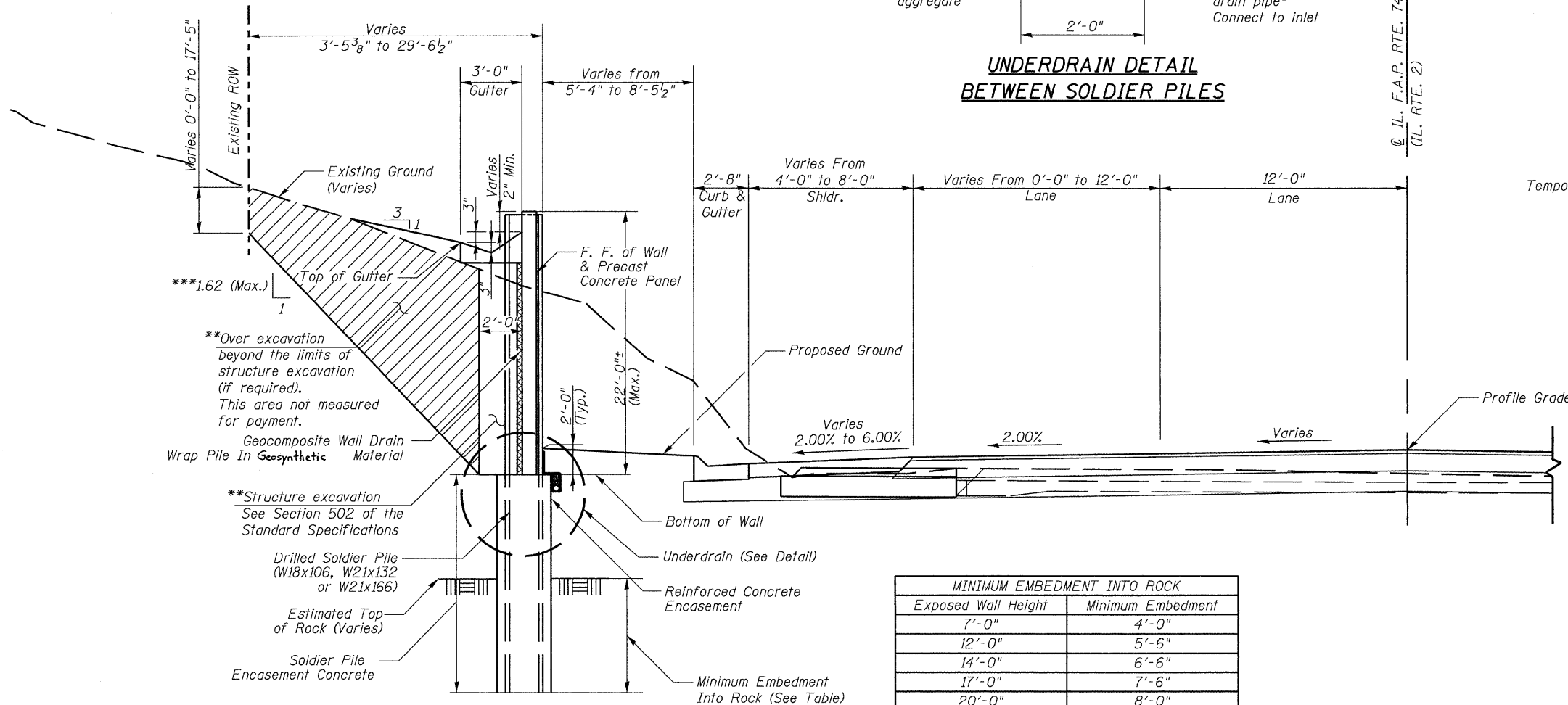
STATE OF ILLINOIS
DEPARTMENT OF TRANSPORTATION



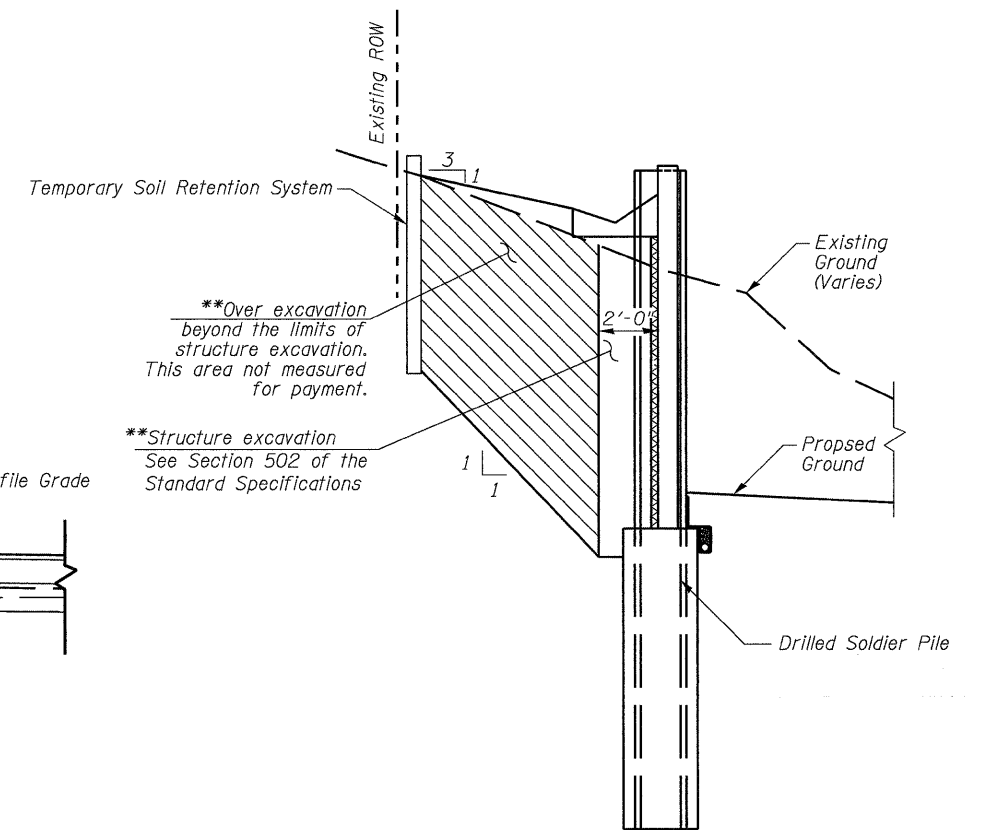
**UNDERDRAIN DETAIL
BETWEEN SOLDIER PILES**



**UNDERDRAIN DETAIL
AT SOLDIER PILES**



**RETAINING WALL TYPICAL SECTION
STA. 727+02.00 TO STA. 740+58.00
(LOOKING NORTH)**



**RETAINING WALL SECTION
WITH TEMPORARY SOIL RETENTION SYSTEM**

Sta. 733+50.00 to Sta. 736+60.00
(Looking North)

**DETAILS
STRUCTURE NO. 071-7004**

* Included in the cost of pipe underdrains for structures.

** Backfill remainder of structure excavation and over excavation with Granular Backfill. Cost included in structure excavation.

*** Use 1:1 slope with Temporary Soil Retention System. Slope of over excavation outside limits of Temporary Soil Retention System cannot exceed limit shown.

Note:
See sheets 8-12 of 23 for pile type, location & spacing.

Precast panels will be finished with a uniform Ashlar Stone pattern with a horizontal break every 1'-0" vertically. See sheet 13 of 23.

DESIGNED	JMW
CHECKED	DFM
DRAWN	CTH
CHECKED	DFM

Howard R. Green Company

SHEET NO. 7 23 SHEETS	F.A.P. RTE. 742	SECTION 37R-4	COUNTY OGLE	TOTAL SHEETS 867	SHEET NO. 219
	CONTRACT NO. 64E17				
FED. ROAD DIST. NO. 7 ILLINOIS FED. AID PROJECT					