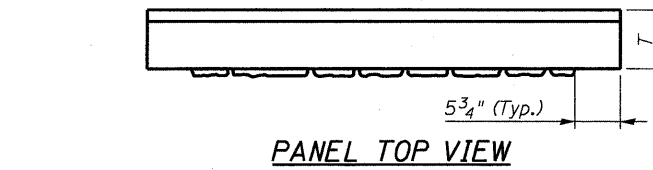
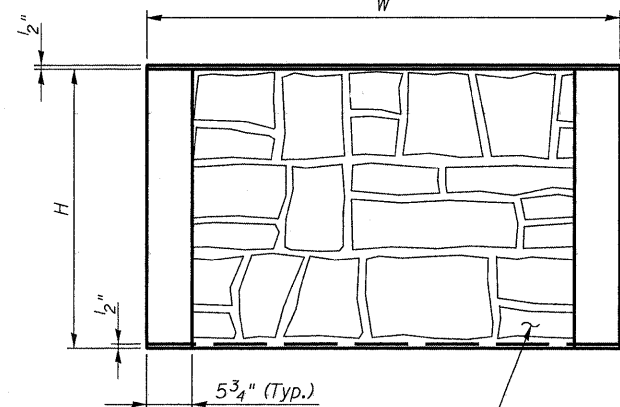
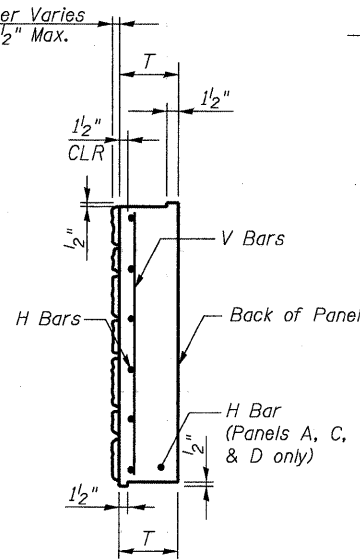


STATE OF ILLINOIS
DEPARTMENT OF TRANSPORTATION

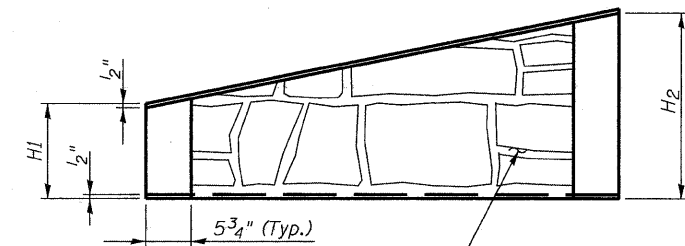


Formliner Varies
0" to 1 1/2" Max.



Ashlar Stone Formliner
(Pattern to Have Horizontal
Break Every 1'-0" Vertically.)

TYPICAL PANEL ELEVATION



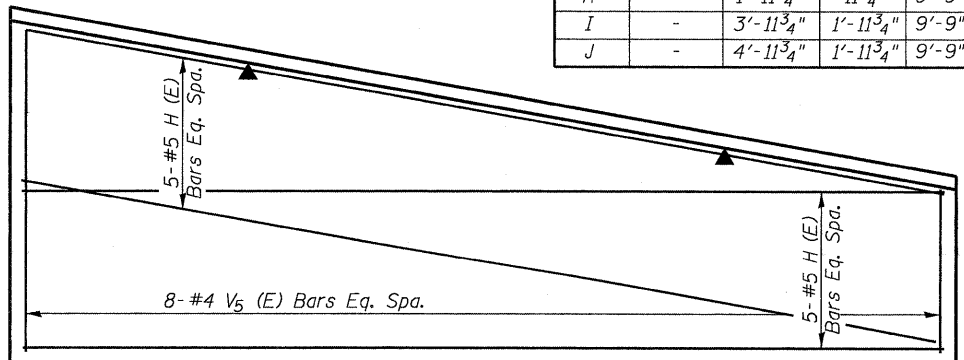
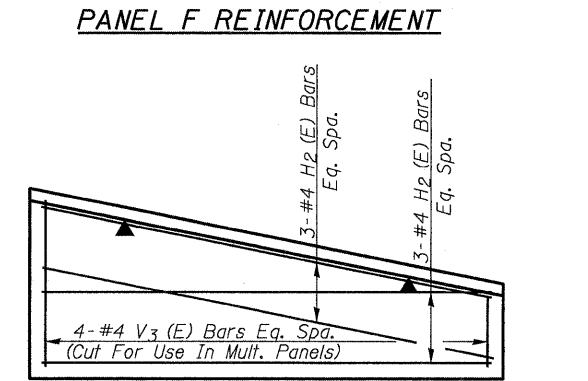
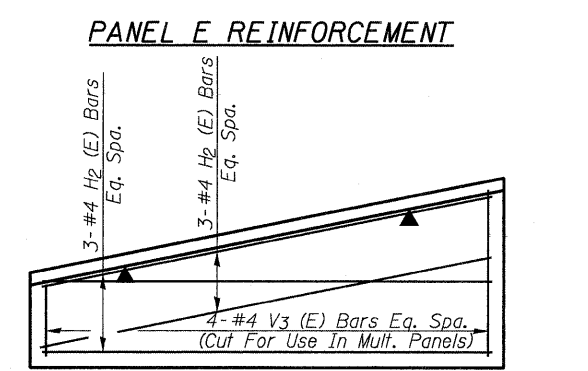
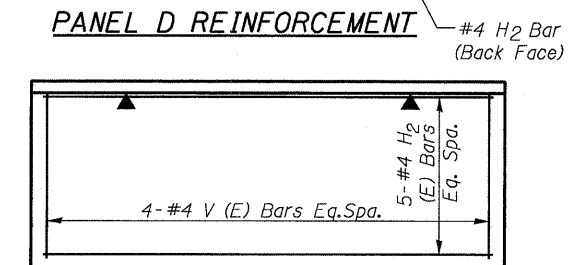
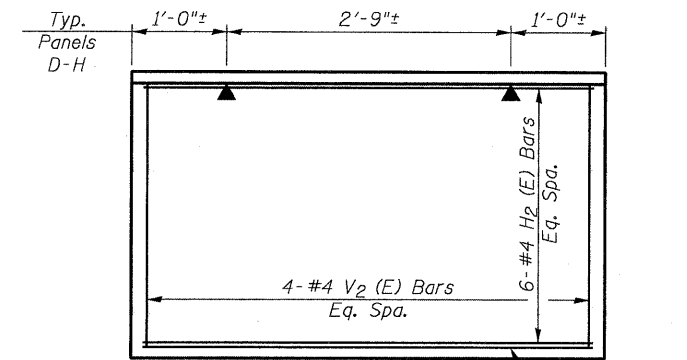
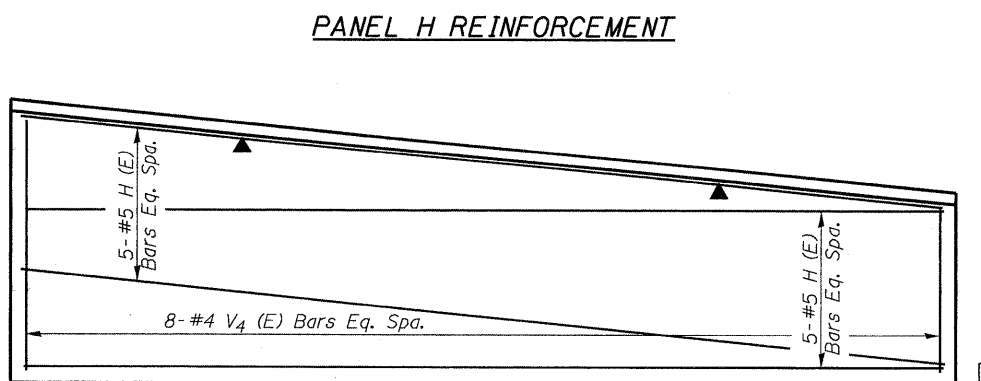
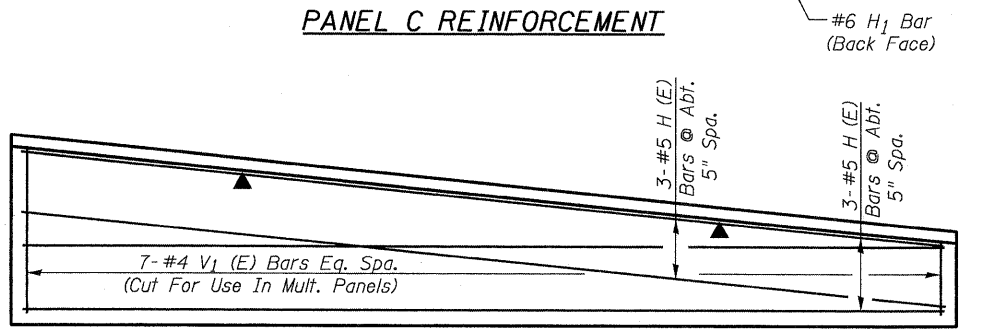
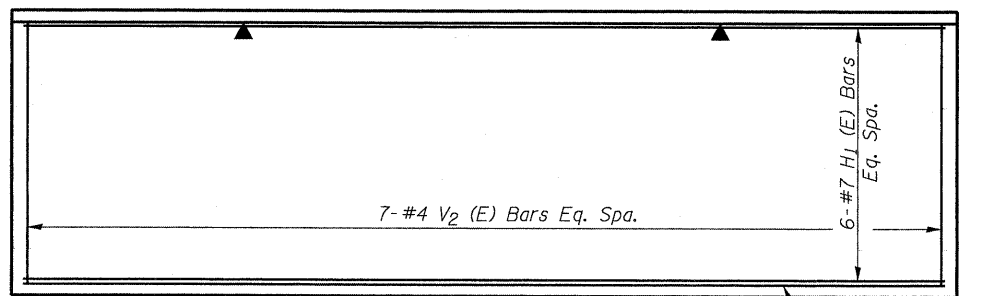
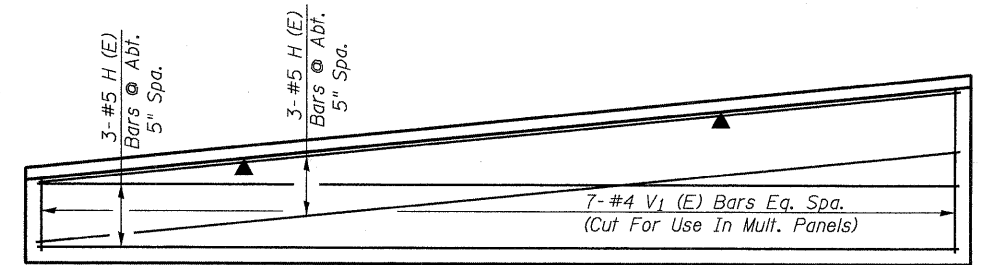
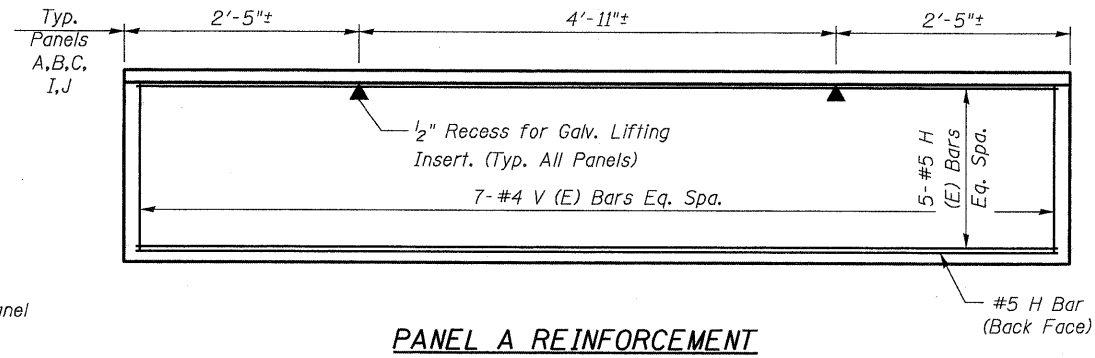
Ashlar Stone Formliner
(Pattern to Have Horizontal
Break Every 1'-0" Vertically.)

SLOPED PANEL ELEVATION

PANEL END VIEW

PANEL DIMENSIONS TABLE

PANEL	H	H1	H2	W	T
A	1'-11 3/4"	-	-	9'-9"	9/4"
B	-	11 3/4"	1'-11 3/4"	9'-9"	9/4"
C	2'-11 3/4"	-	-	9'-9"	9/4"
D	2'-11 3/4"	-	-	4'-9"	9/4"
E	1'-11 3/4"	-	-	4'-9"	9/4"
F	-	11 3/4"	1'-11 3/4"	4'-9"	9/4"
G	-	1'-11 3/4"	11 3/4"	4'-9"	9/4"
H	-	1'-11 3/4"	11 3/4"	9'-9"	9/4"
I	-	3'-11 3/4"	1'-11 3/4"	9'-9"	9/4"
J	-	4'-11 3/4"	1'-11 3/4"	9'-9"	9/4"



DESIGNED	JMW
CHECKED	DFM
DRAWN	CTH
CHECKED	DFM

PANEL J REINFORCEMENT

**PANEL DETAILS
STRUCTURE NO. 071-7004**

SHEET NO. 13 23 SHEETS	F.A.P. RTE. 742	SECTION 37R-4	COUNTY OGLE	TOTAL SHEETS 867	SHEET NO. 225
	CONTRACT NO. 64E17				
FED. ROAD DIST. NO. 7 ILLINOIS FED. AID PROJECT					