

Benchmark: Railroad spike in tree at Sta. 854+68.17,
42.39' Rt., Elev. = 677.00

Existing Structure: None

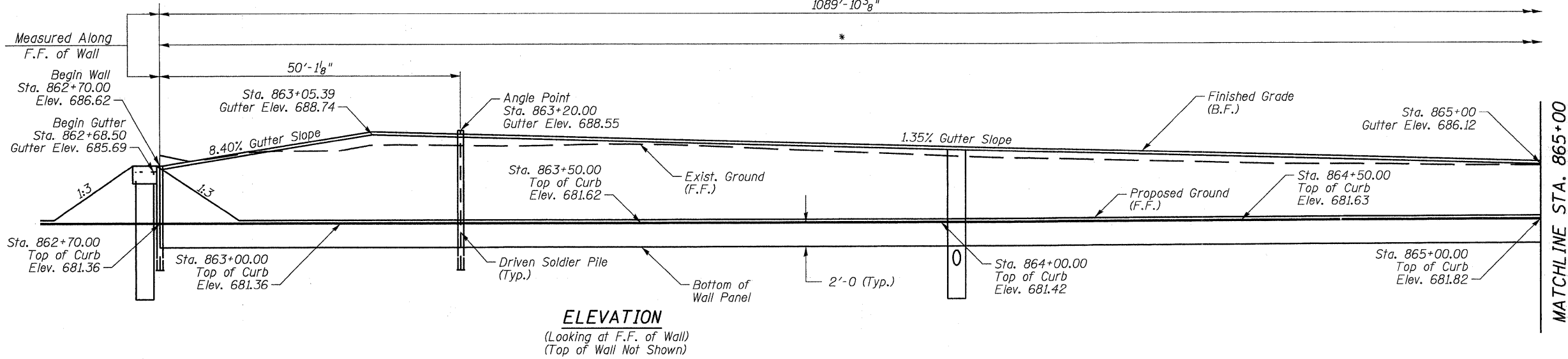
* For top of wall elevation, pile section, spacing and tip elevation see sheets 7-10 of 18. Bottom of wall panels shall be a minimum of 2'-0" below top of curb.

STATE OF ILLINOIS
DEPARTMENT OF TRANSPORTATION

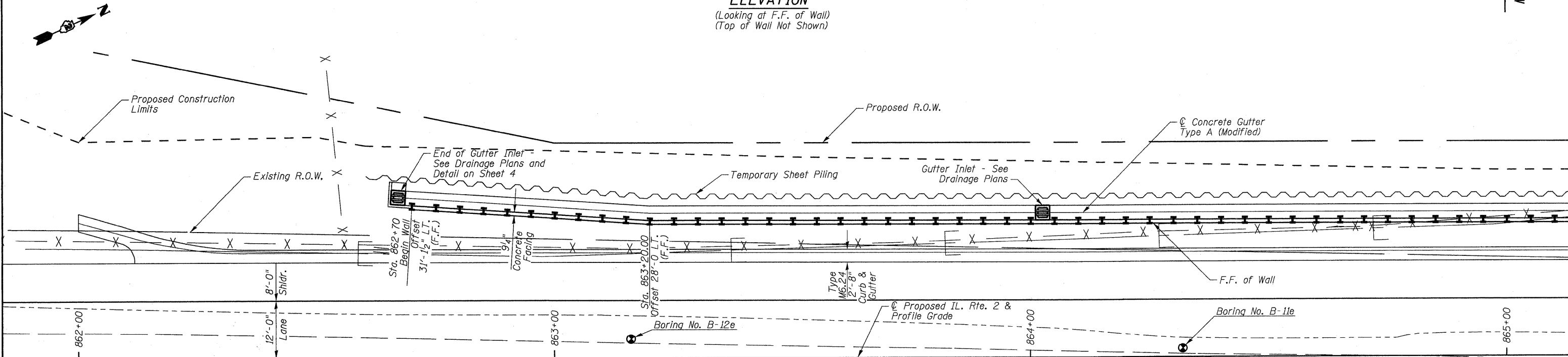
1089'-10³/₈"

SHEET INDEX

NO.	DESCRIPTION
1-4	GENERAL PLAN
5	GENERAL NOTES & TOTAL BILL OF MATERIALS
6	WALL SECTION
7-10	WALL PLAN
11	PANEL DETAILS
12	WALL DETAILS
13-18	BORING LOGS



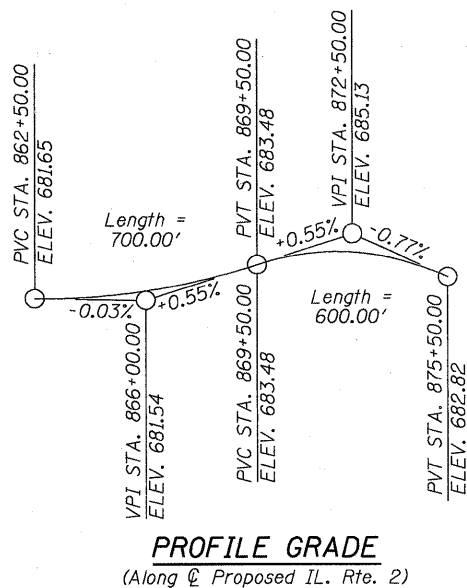
ELEVATION
(Looking at F.F. of Wall)
(Top of Wall Not Shown)



PLAN

CURVE DATA
(IL. Rte. 2)

P.I. STA = 869+73.50
Δ = 21° 08' 35" (LT.)
D = 2° 51' 53"
R = 2,000.00'
T = 373.26'
L = 738.03'
E = 34.53'
P.C. STA = 866+00.24
P.T. STA = 873+38.27



PROFILE GRADE
(Along & Proposed IL. Rte. 2)

NOTES

Stations and Offsets are given from the & Proposed IL. Rte. 2 at the front face of wall unless otherwise noted.

See Sheet 5 of 18 for Bill of Materials.

F.F. = Front Face
B.F. = Back Face

Howard R. Green Company

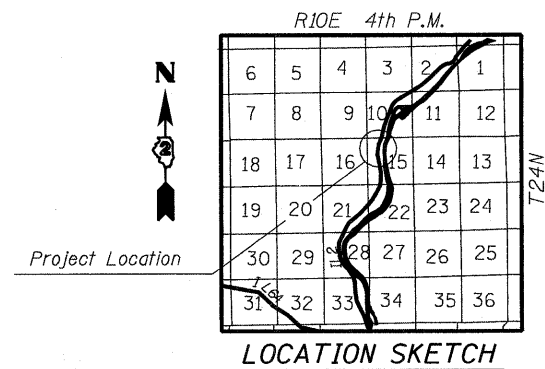


David F. Maxwell, S.E.
Reg. No. 081-005455
Date: 3/17/10
My registration expires November 30, 2010.

APPROVED
FOR STRUCTURAL ADEQUACY ONLY

Ralph E. Anderson (S.E.)
ENGINEER OF BRIDGES AND STRUCTURES

GENERAL PLAN & ELEVATION
IL. RTE. 2
FAP 742 SECTION 37R-4
OGLE COUNTY
RETAINING WALL F
STA. 862+70.00 TO STA. 873+70.00
STRUCTURE NO. 071-7005



LOCATION SKETCH

DESIGNED	CTH
CHECKED	DFM
DRAWN	CTH
CHECKED	DFM

SHEET NO.	F.A.P. RTE.	SECTION	COUNTY	TOTAL SHEETS	SHEET NO.
18 SHEETS	742	37R-4	OGLE	867	236
CONTRACT NO. 64E17					
FED. ROAD DIST. NO. 7 ILLINOIS FED. AID PROJECT					