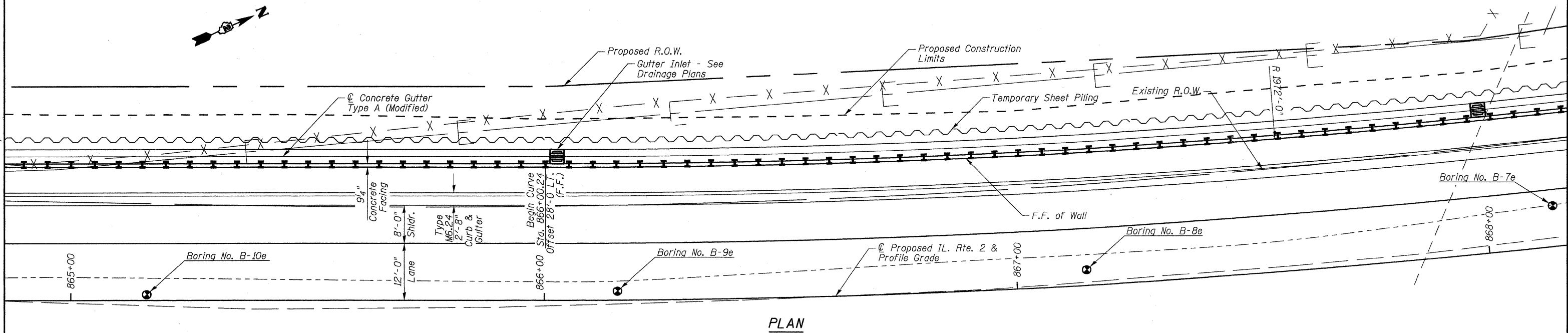
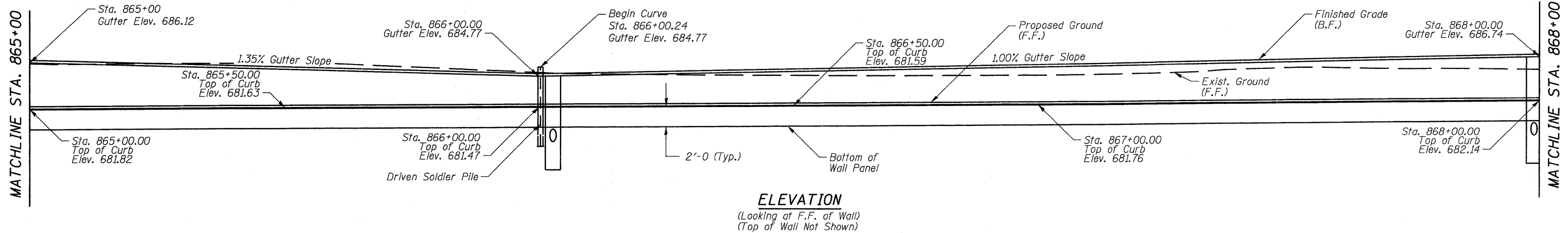


STATE OF ILLINOIS  
DEPARTMENT OF TRANSPORTATION

\* For top of wall elevation, pile section, spacing and tip elevation see sheets 7-10 of 18. Bottom of wall panels shall be a minimum of 2'-0" below top of curb.

1089'-10<sup>3</sup>/<sub>8</sub>"



DESIGNED	CTH
CHECKED	DFM
DRAWN	CTH
CHECKED	DFM

Howard R. Green Company

**GENERAL PLAN & ELEVATION**  
**STRUCTURE NO. 071-7005**

SHEET NO. 2 18 SHEETS	F.A.P. RTE. 742	SECTION 37R-4	COUNTY OGLE	TOTAL SHEETS 867	SHEET NO. 237
	CONTRACT NO. 64E17				
FED. ROAD DIST. NO. 7 ILLINOIS FED. AID PROJECT					