

Benchmark: Headwall, Existing Sta. 1042+80.64, 22.47' LT.
Proposed Sta. 1042+24.28, 48.89' LT.
Elev. 687.60

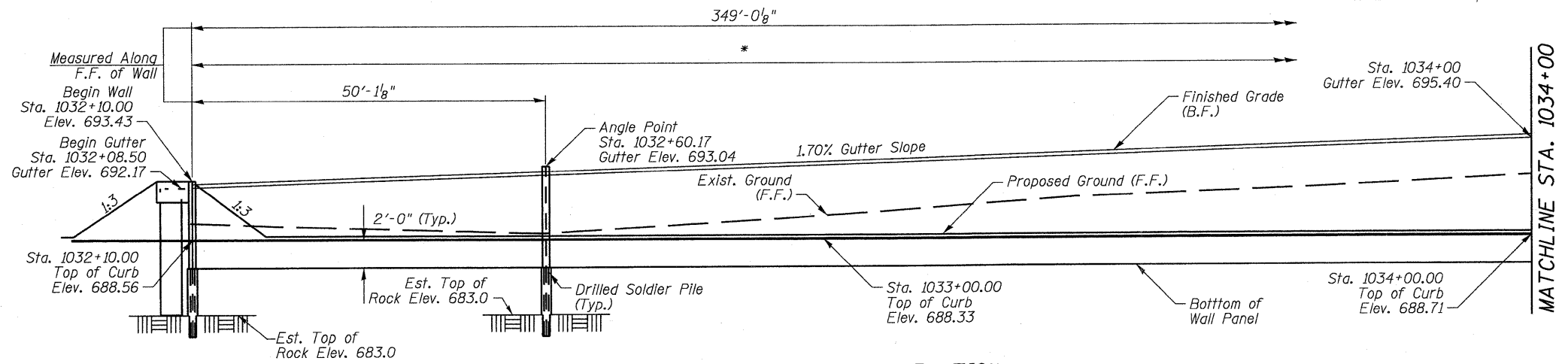
STATE OF ILLINOIS
DEPARTMENT OF TRANSPORTATION

* For top of wall elevation, pile section, spacing and tip elevation see sheets 5 and 6 of 11. Bottom of wall panels shall be a minimum of 2'-0" below top of curb.

Existing Structure: None

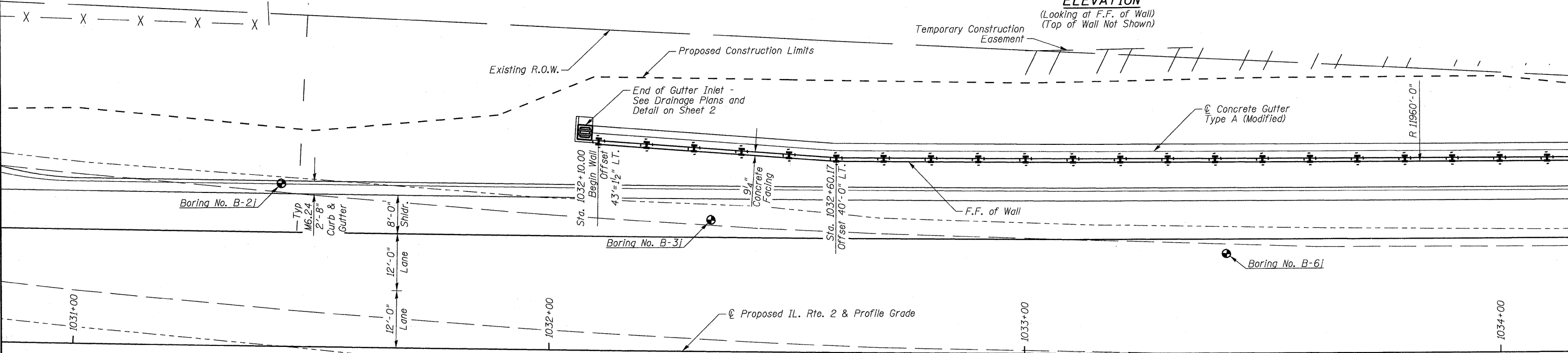
SHEET INDEX

NO.	DESCRIPTION
1-2	GENERAL PLAN
3	GENERAL NOTES & TOTAL BILL OF MATERIALS
4	WALL SECTION
5-6	WALL PLAN
7	PANEL DETAILS
8	WALL DETAILS
9-11	BORING LOGS



ELEVATION

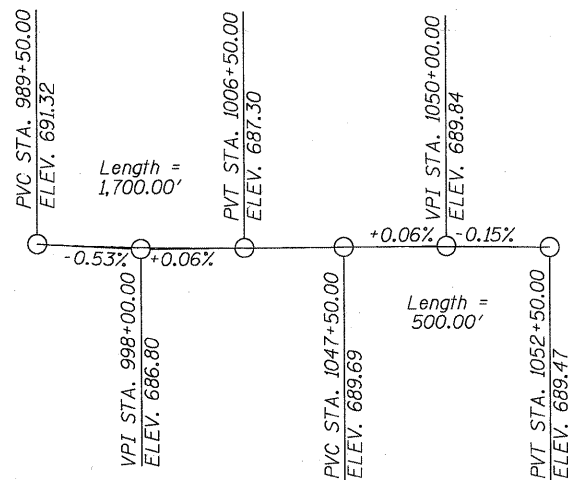
(Looking at F.F. of Wall)
(Top of Wall Not Shown)



PLAN

CURVE DATA
(IL. Rte. 2)

P.I. STA = 1037+32.46
Δ = 9° 08' 41" (L.T.)
D = 0° 28' 39"
R = 12,000.00'
T = 959.68'
L = 1,915.28'
E = 38.31'
P.C. STA = 1027+72.78
P.T. STA = 1046+88.06



PROFILE GRADE

(Along Centerline Proposed IL. Rte. 2)

NOTES

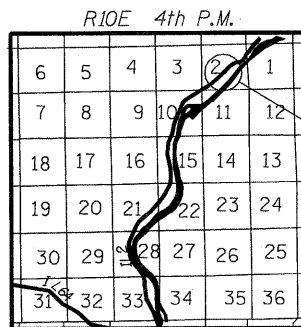
Stations and Offsets are given from the Centerline Proposed IL. Rte. 2 at the front face of wall unless otherwise noted.

See sheet 3 of 11 for Bill of Materials.

F.F. = Front Face
B.F. = Back Face



David F. Maxwell, S.E.
Date: 3/17/10
My registration expires November 30, 2010.



LOCATION SKETCH

APPROVED
FOR STRUCTURAL ADEQUACY ONLY

Relph E. Anderson, P.E.
ENGINEER OF BRIDGES AND STRUCTURES

GENERAL PLAN & ELEVATION

IL. RTE. 2

FAP 742 SECTION 37R-4

OGLE COUNTY

RETAINING WALL G

STA. 1032+10.00 TO STA. 1035+60.00

STRUCTURE NO. 071-7006

DESIGNED	CTH
CHECKED	DFM
DRAWN	CTH
CHECKED	DFM

Howard R. Green Company

SHEET NO.	F.A.P. RTE.	SECTION	COUNTY	TOTAL SHEETS	SHEET NO.
11 SHEETS	742	37R-4	OGLE	867	254
CONTRACT NO. 64E17					
FED. ROAD DIST. NO. 7 ILLINOIS FED. AID PROJECT					