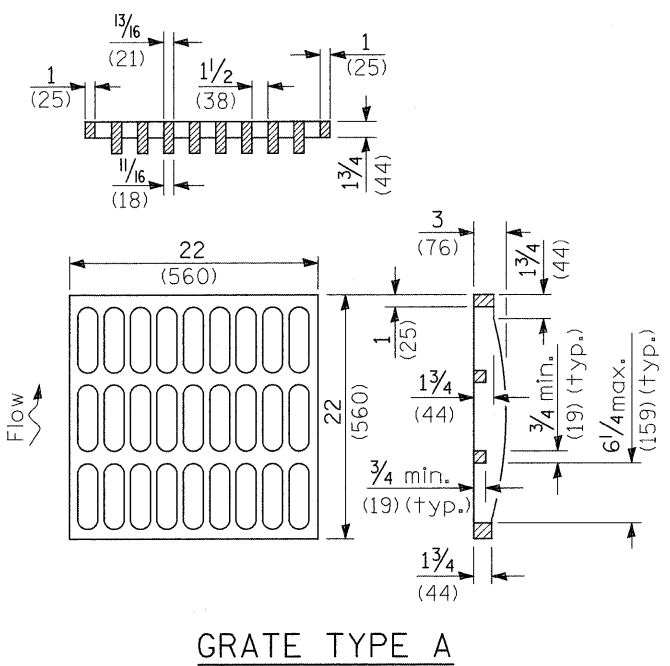
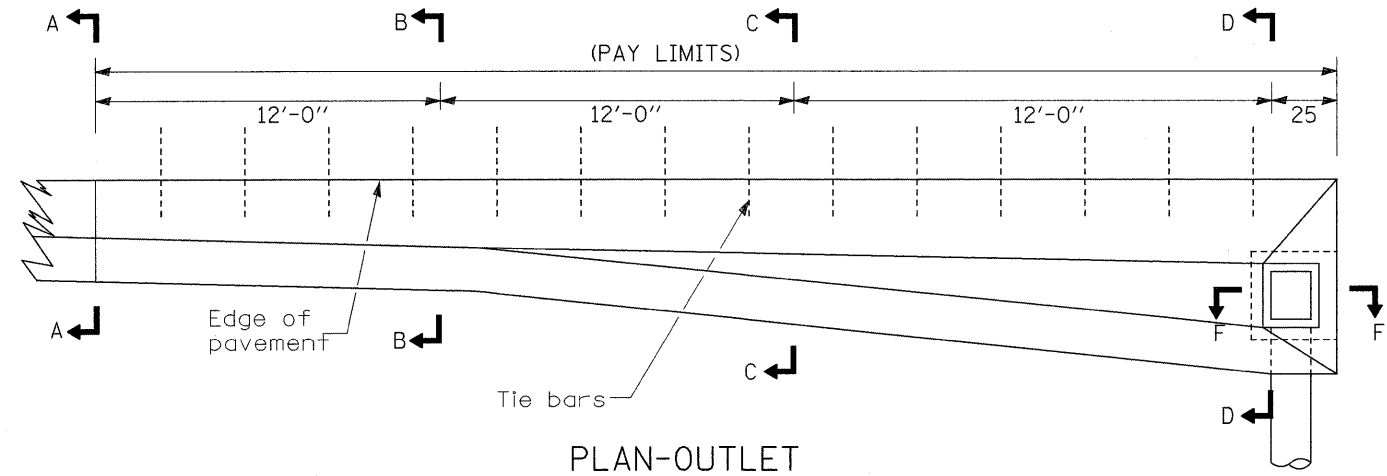
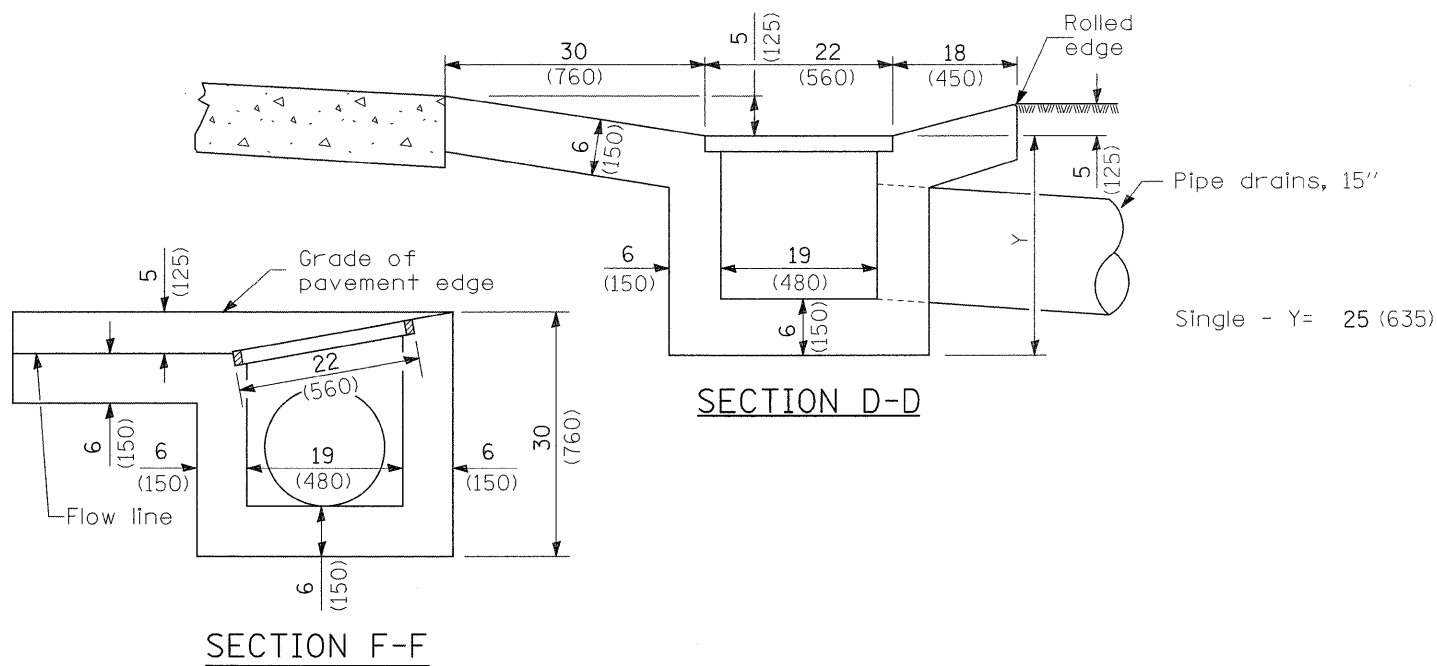
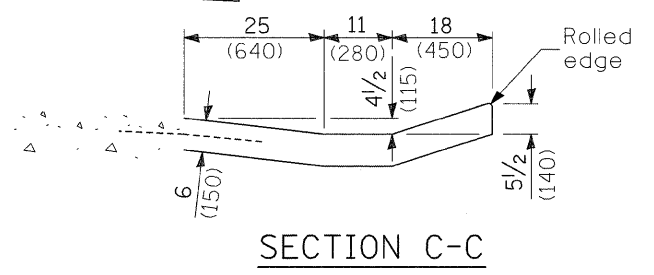
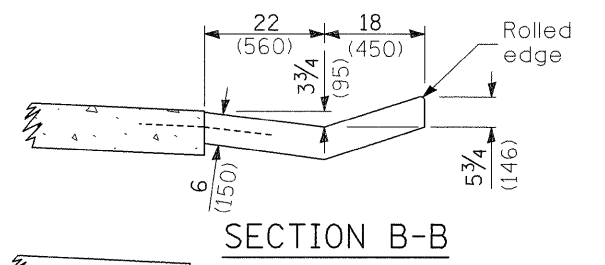
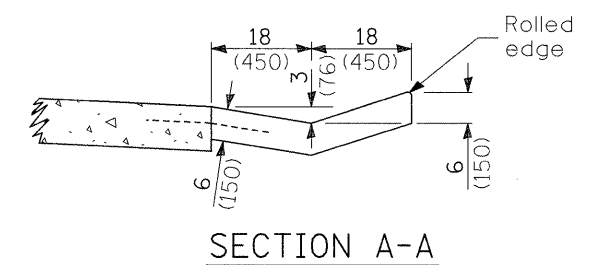


GUTTER OUTLET, SPECIAL



QUANTITIES

Material	Quantity
Class SI Concrete - cu. yd.	3.3
Cast Iron Grate - Ea.	1



GENERAL NOTES

The Gutter Outlet (Special) shall be paid for at the contract unit price per "EACH", GUTTER OUTLET (SPECIAL), which price shall include the cast iron grate, tie bars, Class SI Concrete, and all excavation and backfilling.

The gutter outlet shall be tied to the pavement in accordance with details for longitudinal construction joint shown on Standard 420001.

Tie bars shall be No. 6 (No. 19) at 24 (600) centers unless otherwise shown.

If the average grade of pavement for the distance A-D exceeds 2%, this distance shall be increased 6' (1.8 m) for each 1% increase in grade.

All dimensions are in inches (millimeters) unless otherwise shown.