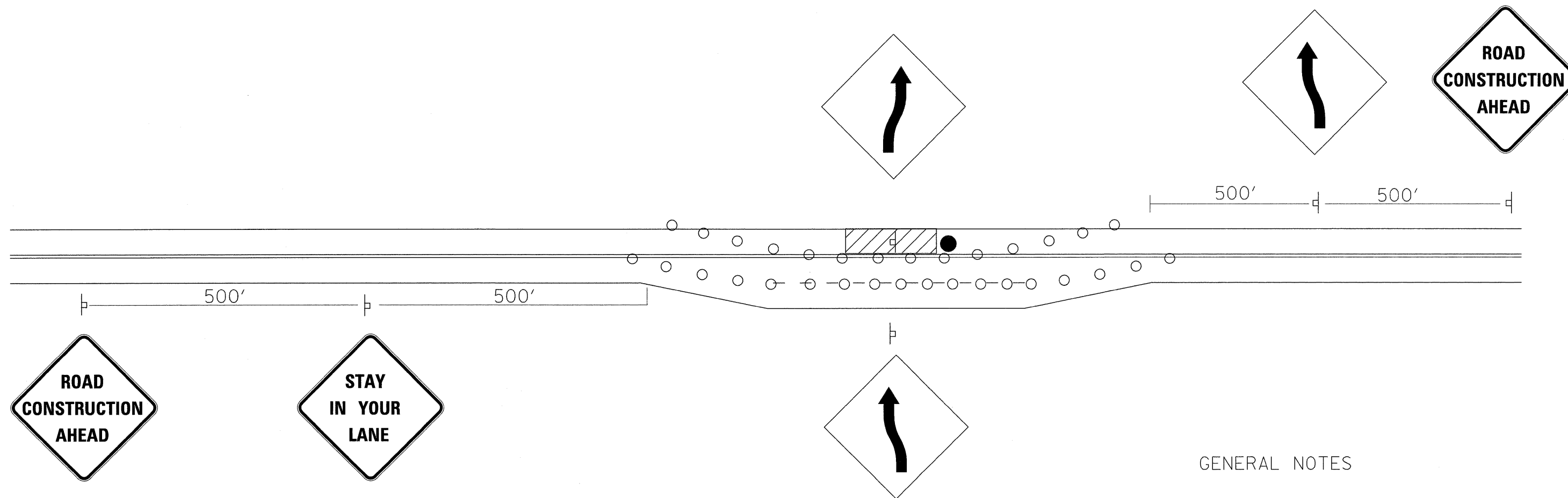


# TRAFFIC CONTROL DETAILS



## GENERAL NOTES

THIS DETAIL IS TO BE USED IN CONJUNCTION WITH THE APPLICABLE TRAFFIC CONTROL AND PROTECTION STANDARD.

THIS TRAFFIC CONTROL DETAIL SHALL BE INCLUDED IN THE COST OF SPECIFIED TRAFFIC CONTROL STANDARDS OR ITEMS.

NOTE: STANDARDS 701301 AND 701306 SHALL NOT BE USED WITHIN 500 FEET OF THE TRANSITION.

○ DRUMS OR BARRICADES AT 50' CTS FOR FIRST 250'. ADDITIONAL DEVICES MAY BE PLACED AT 100' CTS.

 WORK AREA

● FLAGGER (REQUIRED FOR SPEEDS >40 MPH)

FILE NAME =	USER NAME = grantpm	DESIGNED -	REVISED -	<b>STATE OF ILLINOIS DEPARTMENT OF TRANSPORTATION</b>	<b>IL ROUTE 2 TRAFFIC CONTROL DETAILS</b>				F.A.P. RTE.	SECTION	COUNTY	TOTAL SHEETS	SHEET NO.
ca\pw_work\PIWIDOT\GRANTPM\dms31213\066828apl.dgn		DRAWN -	REVISED -		742	37R-4	OGLE	867	461				
	PLOT SCALE = 20.0000' / IN.	CHECKED -	REVISED -						CONTRACT NO. 64E17				
	PLOT DATE = Tue Mar 30 09:22:11 2010	DATE -	REVISED -		SCALE:	SHEET NO.	OF SHEETS	STA.	TO STA.	ILLINOIS FED. AID PROJECT			