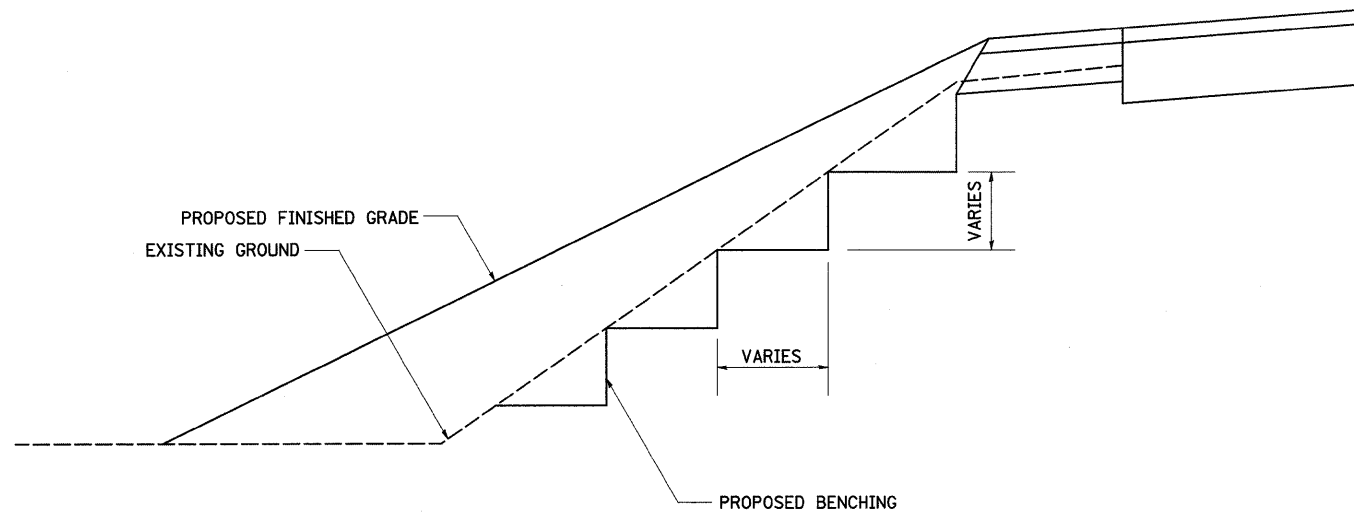


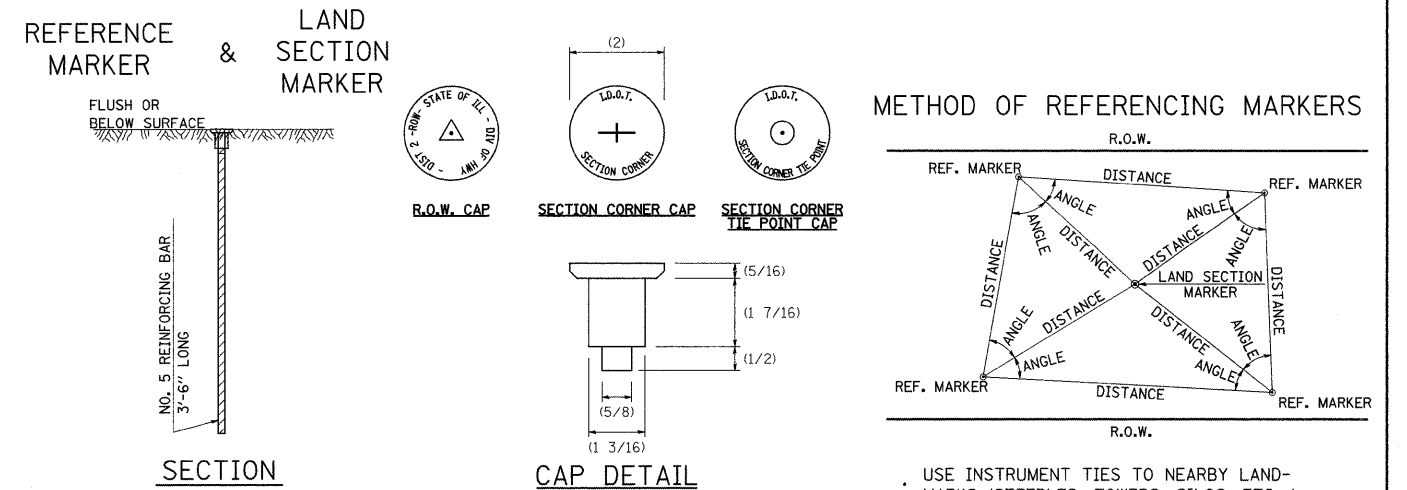
TYPICAL BENCHING ON EXISTING EMBANKMENT



REVISED - 2-22-06

TYPICAL BENCHING ON EXISTING EMBANKMENT 50.4

LAND SECTION & REFERENCE MARKERS



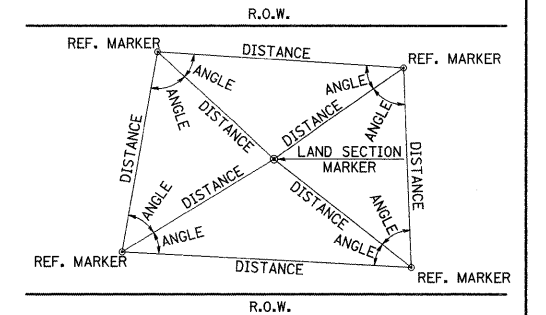
METHOD OF REFERENCING POINTS

REFERENCE MARKERS SHALL BE USED TO TIE IN PERMANENT LAND SECTION AND 1/4 SECTION CORNERS. WHERE LAND SECTION MARKERS FALL IN THE SHOULDERS OR GRAVEL SURFACES, THE TOP OF THE BAR SHALL BE KEPT 3" BELOW THE SURFACE. LAND SECTION MARKERS LOCATED IN TRAFFIC LANES SHALL BE REPLACED BY CORE DRILL AND RESETTING PIN.

ALUMINUM CAPS SHALL BE PLACED ON TOP OF THE REINFORCEMENT BAR. THERE ARE 3 TYPES OF CAPS, ONE FOR THE RIGHT-OF-WAY CORNERS, ONE FOR THE SECTION CORNERS AND ONE FOR THE SECTION CORNER TIE POINTS. THE CAPS WILL BE SUPPLIED BY THE SURVEYOR WHO IS RESPONSIBLE FOR MONUMENTING CORNERS.

REVISED - 03-05-10

METHOD OF REFERENCING MARKERS

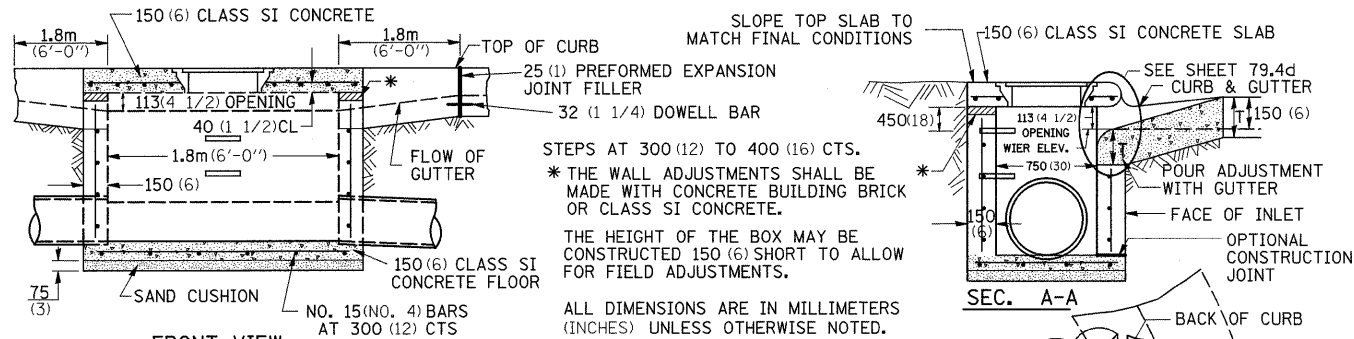


- USE INSTRUMENT TIES TO NEARBY LAND-MARKS (STEEPLES, TOWERS, SILOS, ETC...)
- IN CULTIVATED FIELDS, SET 28" OR MORE BELOW GROUND SURFACE.
- IN FENCE LINE OR PROTECTED AREA SET TOP AT GROUND LEVEL SO AS NOT TO BE DISTURBED BY MOWING.

ALL DIMENSIONS ARE IN INCHES UNLESS OTHERWISE NOTED.

LAND SECTION & REFERENCE MARKERS 63.4

INLET SPECIAL NO. 5



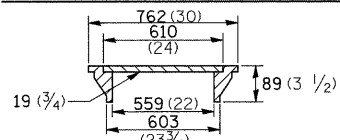
STEPS AT 300 (12) TO 400 (16) CTS.
 * THE WALL ADJUSTMENTS SHALL BE MADE WITH CONCRETE BUILDING BRICK OR CLASS SI CONCRETE.
 THE HEIGHT OF THE BOX MAY BE CONSTRUCTED 150 (6) SHORT TO ALLOW FOR FIELD ADJUSTMENTS.

ALL DIMENSIONS ARE IN MILLIMETERS (INCHES) UNLESS OTHERWISE NOTED.

NOTES

- SEE STANDARD 602701 FOR DETAILS OF STEPS. 25 (1) PREFORMED EXPANSION JOINTS AS SHOWN SHALL BE PROVIDED ON EACH SIDE OF INLET.
- CLASS SI CONCRETE OR PRECAST CONCRETE SHALL BE USED THROUGHOUT.
- THE SIDE WALLS MAY BE BUILT AS PRECAST SEGMENTAL SECTIONS.
- REINFORCEMENT FOR INLET SPECIAL NO. 5 SHALL BE ACCORDING TO DISTRICT STANDARD 79.4e
- STEPS SHALL BE OMITTED WHEN DEPTH OF INLET IS LESS THAN 1.5 m (5 ft.)
- THE INLET SHALL BE CAST IN PLACE OR PRECAST.
- EXCEPT AS NOTED HEREON INLET SPECIAL NO. 5 SHALL BE CONSTRUCTED IN ACCORDANCE WITH SECTION 602 OF THE STANDARD SPECIFICATIONS.

LIGHT WEIGHT MANHOLE CASTING

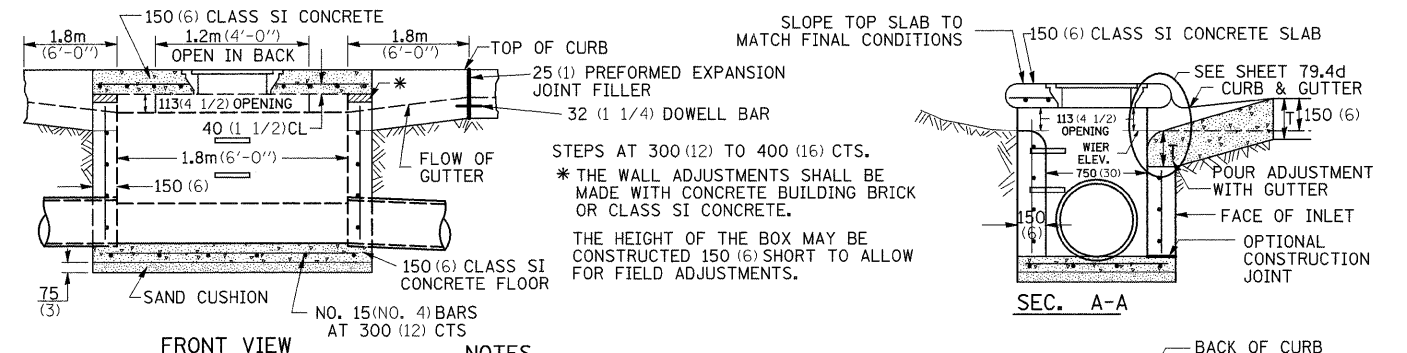


TOTAL WEIGHT 73 KG. (160 LBS.)

REVISED - 4-4-05

INLET SPECIAL NO. 5 79.4b

INLET SPECIAL NO. 6

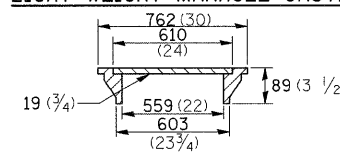


FRONT VIEW

NOTES

- SEE STANDARD 602701 FOR DETAILS OF STEPS. 25 (1) PREFORMED EXPANSION JOINTS AS SHOWN SHALL BE PROVIDED ON EACH SIDE OF INLET.
- CLASS SI CONCRETE OR PRECAST CONCRETE SHALL BE USED THROUGHOUT.
- THE SIDE WALLS MAY BE BUILT AS PRECAST SEGMENTAL SECTIONS.
- REINFORCEMENT FOR INLET SPECIAL NO. 6 SHALL BE ACCORDING TO DISTRICT STANDARD 79.4e
- STEPS SHALL BE OMITTED WHEN DEPTH OF INLET IS LESS THAN 1.5 m (5 ft.)
- THE INLET SHALL BE CAST IN PLACE OR PRECAST.
- EXCEPT AS NOTED HEREON INLET SPECIAL NO. 6 SHALL BE CONSTRUCTED IN ACCORDANCE WITH SECTION 602 OF THE STANDARD SPECIFICATIONS.
- THE CONTRACT UNIT PRICE EACH FOR INLET SPECIAL NO. 6 SHALL INCLUDE THE COST OF FURNISHING AND INSTALLING THE FRAME, LID, REINFORCEMENT BARS, FLOOR AND TOP SLABS, CAST IRON STEPS (IF USED).
- THE CURB AND GUTTER WILL BE PAID FOR SEPARATELY AND WILL BE MEASURED THROUGH THE INLET.
- THE CURB AND GUTTER ADJACENT TO AND 1.8m (6 FT) ON EITHER SIDE OF THE INLET SHALL BE CONSTRUCTED AS SHOWN WITH NO ADDITIONAL COMPENSATION FOR THE TRANSITION.

LIGHT WEIGHT MANHOLE CASTING



TOTAL WEIGHT 73 KG. (160 LBS.)

REVISED - 4-4-05

REVISED -	REGION 2 / DISTRICT 2 STANDARD			F.A.P. RTE.	SECTION	COUNTY	TOTAL SHEETS	SHEET NO.	
REVISED -				742	37R-4	OGLE	867	468	
REVISED -				CONTRACT NO. 64E17					
REVISED -				FED. ROAD DIST. NO. ILLINOIS FED. AID PROJECT					
REVISED -	SCALE: 50.0000' / IN	SHEET NO.	OF	SHEETS	STA.	TO	STA.		

PLOT DATE = Tue Mar 30 09:22:31 2010

INLET SPECIAL NO. 6 79.4c