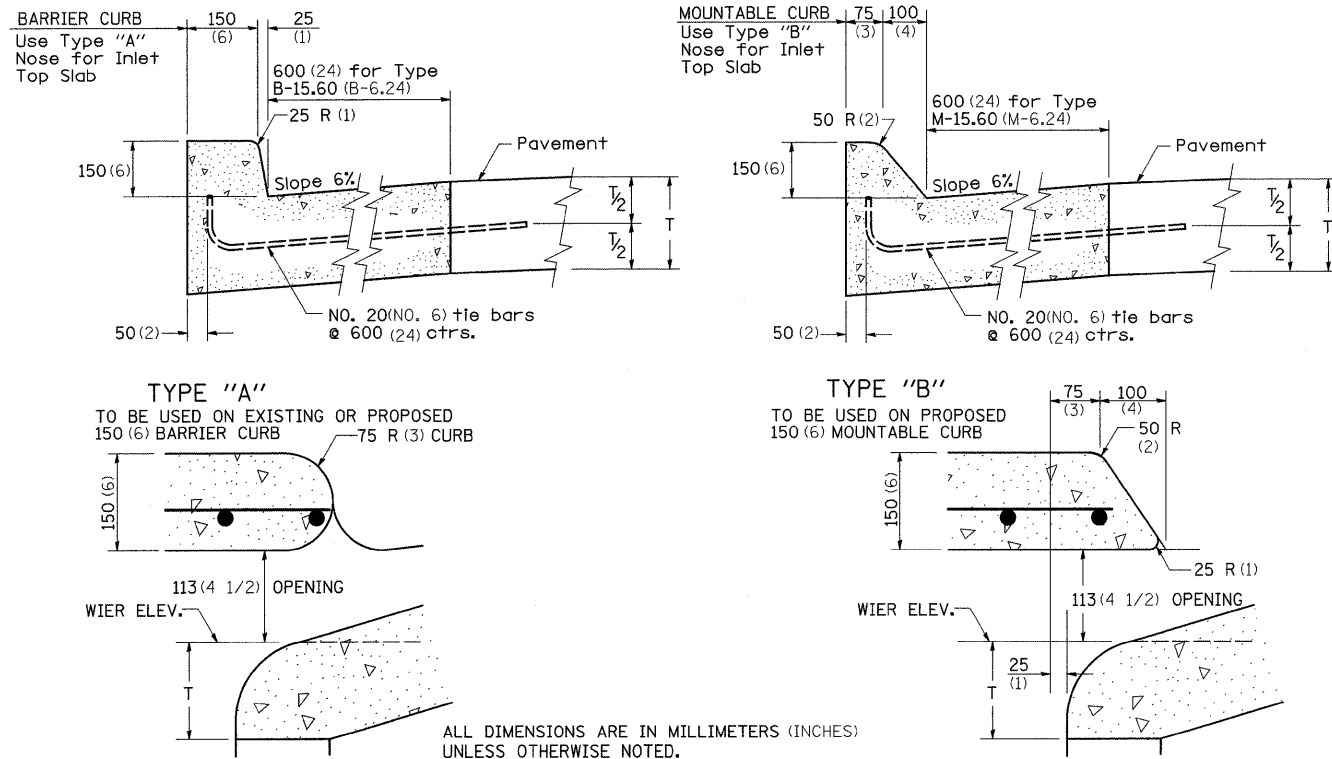


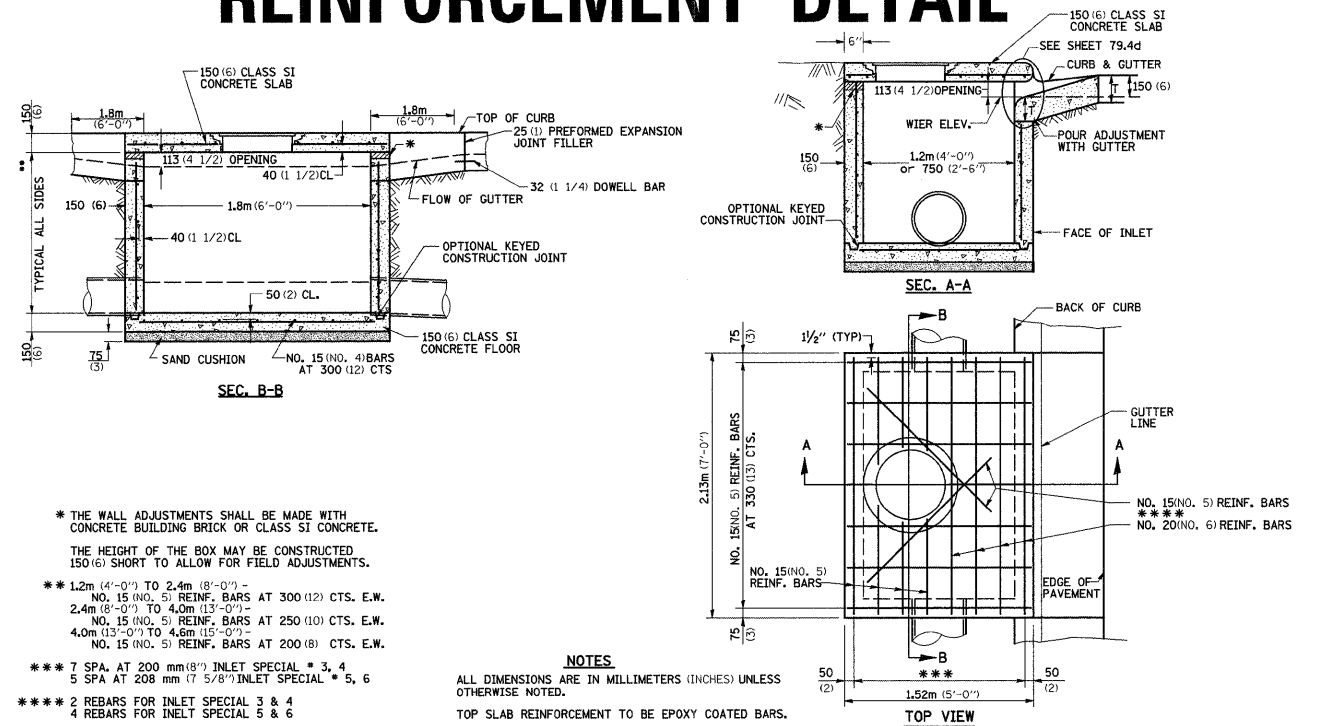
NOSE TYPE FOR INLET TOP SLAB



REVISED - 2-14-95

NOSE TYPE FOR INLET TOP SLAB 79.4d

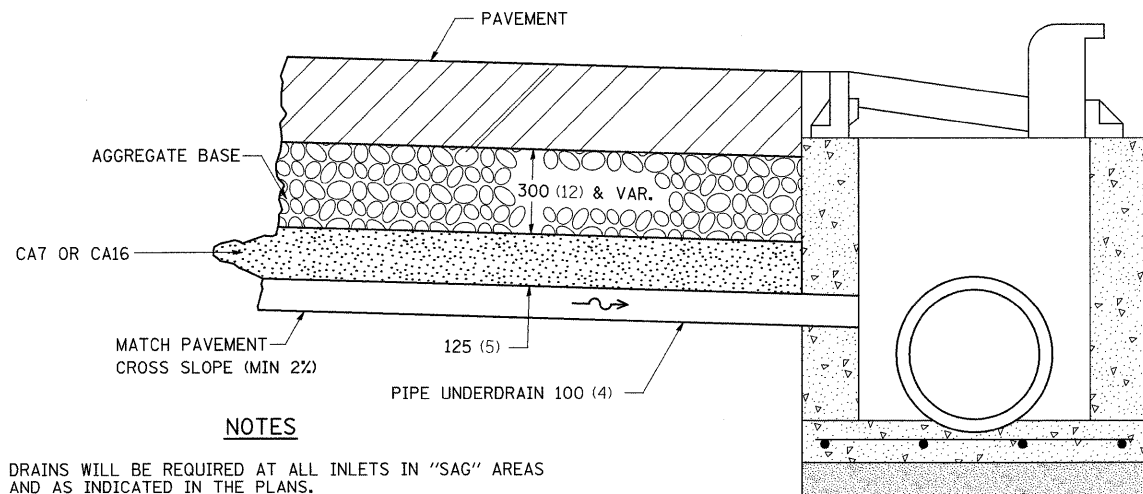
INLET SPECIAL NO. 3, 4, 5, 6 REINFORCEMENT DETAIL



REVISED - 11-01-07

INLET SPECIAL NO. 3, 4, 5, 6 REINFORCEMENT DETAIL 79.4e

DRAIN FOR AGGREGATE BASES IN URBAN AREAS



REVISED - 4-7-99

DRAIN FOR AGGREGATE BASES IN URBAN AREAS 88.4

TREE REPLACEMENT SCHEDULE

CODE NUMBER	SCIENTIFIC NAME	COMMON NAME	SIZE	UNIT	QUANTITY
A2C022G3	TREE, CARYA ILLINOINENSIS	PECAN	CONTAINER GROWN, 3-GALLON	EACH	395
A2C040G3	TREE, PLATANUS OCCIDENTALIS	SYCAMORE	CONTAINER GROWN, 3-GALLON	EACH	395
A2C050G3	TREE, QUERCUS BICOLOR	SWAMP WHITE OAK	CONTAINER GROWN, 3-GALLON	EACH	395
A2C060G3	TREE, QUERCUS PALUSTRIS	PIN OAK	CONTAINER GROWN, 3-GALLON	EACH	498
A2001714	TREE, ACER SACCHARUM	SUGAR MAPLE	1-3/4" CALIPER, BALLED AND BURLAPPED	EACH	212
A2006714	TREE, QUERCUS MACROCARPA	BUR OAK	1-3/4" CALIPER, BALLED AND BURLAPPED	EACH	121
A2007114	TREE, QUERCUS RUBRA	RED OAK	1-3/4" CALIPER, BALLED AND BURLAPPED	EACH	212
B2001114	TREE, CERCIS CANADENSIS	EASTERN RED BUD	1-3/4" CALIPER, TREE FORM, BALLED AND BURLAPPED	EACH	121
B2004814	TREE, MALUS SARGENTII	SARGENT CRABAPPLE	1-3/4" CALIPER, TREE FORM, BALLED AND BURLAPPED	EACH	121
B2005014	TREE, MALUS SNOWDRIFT	SNOWDRIFT CRABAPPLE	1-3/4" CALIPER, TREE FORM, BALLED AND BURLAPPED	EACH	121

SEE GENERAL NOTES FOR ADDITIONAL TREE NOTES AND COMMITMENTS.

8-10-05

REVISED -	REGION 2 / DISTRICT 2 STANDARD			F.A.P. RTE. 742	SECTION 37R-4	COUNTY OGLE	TOTAL SHEETS 867	SHEET NO. 469
REVISED -	SCALE: 50:0000' / 1"	SHEET NO.	OF SHEETS	STA.	TO STA.	FED. ROAD DIST. NO.	ILLINOIS FED. AID PROJECT	CONTRACT NO. 64E17

TREE REPLACEMENT SCHEDULE 90.4