

INDEX OF SHEETS

1. COVER SHEET
2. GENERAL NOTES
3. SUMMARY OF QUANTITIES
4. TYPICAL SECTIONS
5. SCHEDULES
6. DETAILS

STANDARDS

- 701001-02 OFF-ROAD OPERATIONS 2L, 2W, MORE THAN 15' (4.5 m) AWAY
 701006-03 OFF-ROAD OPERATIONS 2L, 2W, 15' (4.5 m) TO 24" (600 mm) FROM PAVEMENT EDGE
 701301-03 LANE CLOSURE, 2L, 2W, SHORT TIME OPERATIONS
 701306-02 LANE CLOSURE, 2L, 2W, SLOW MOVING OPERATIONS DAY ONLY, FOR SPEEDS ≥ 45 MPH
 701311-03 LANE CLOSURE, 2L, 2W, MOVING OPERATIONS - DAY ONLY
 701901-01 TRAFFIC CONTROL DEVICES

STATE OF ILLINOIS
 DEPARTMENT OF TRANSPORTATION
 DIVISION OF HIGHWAYS

**PROPOSED
 HIGHWAY PLANS**

**FAP ROUTE 41 (IL 17) & FAP 786 (IL 170)
 SECTION D3 CRACK SEAL 2011-2**

**ROUTING AND SEALING PAVEMENT CRACKS
 FAP ROUTE 41 (IL 17) FROM THE ECL OF DWIGHT TO THE WCL OF REDDICK
 FAP ROUTE 786 (IL 170) FROM IL 23 TO LASALLE COUNTY LINE
 LIVINGSTON COUNTY**

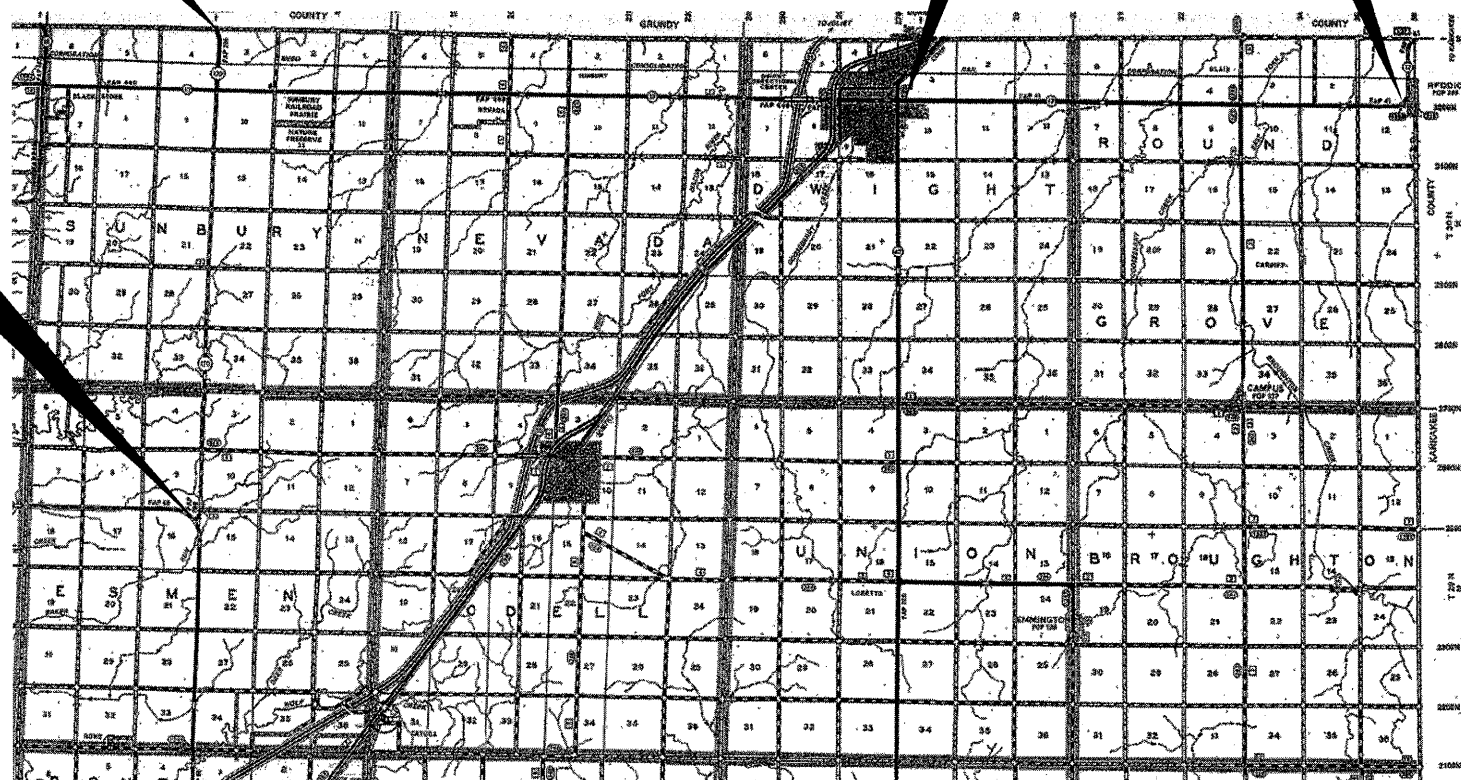
C-93-130-10

PROJECT END
 FAP RTE. 786 (IL 170)
 LASALLE COUNTY LINE

PROJECT START
 FAP RTE. 41 (IL 17)
 ECL OF DWIGHT
 (BANNON DR.)

PROJECT END
 FAP RTE. 41 (IL 71)
 WCL OF REDDICK
 (S 20000 W RD.)

PROJECT START
 FAP RTE. 786 (IL 170)
 IL RTE. 23



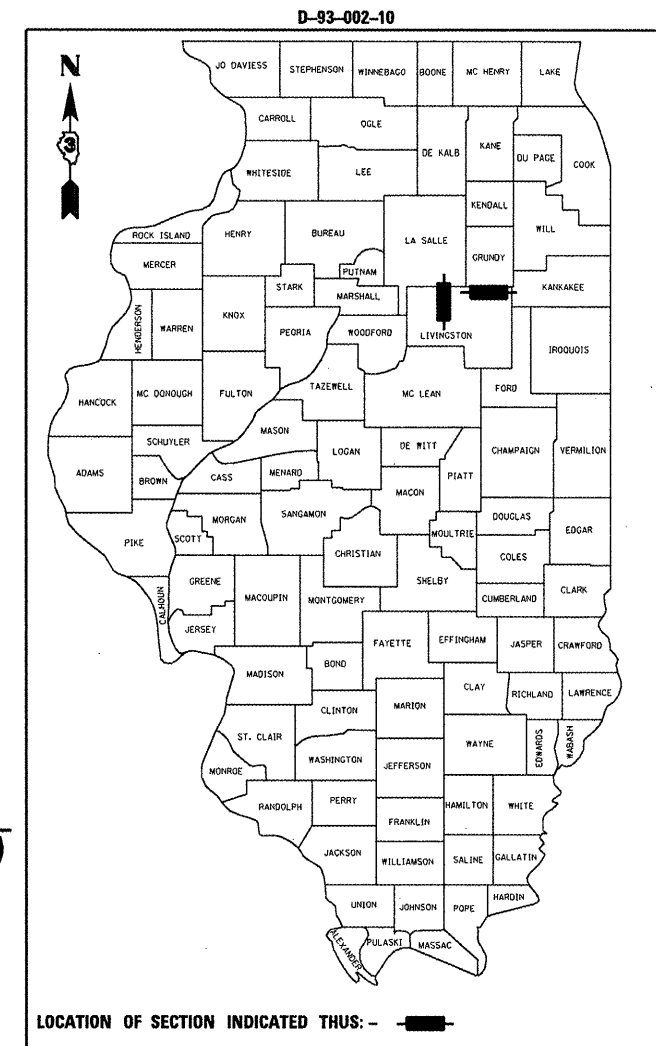
J.U.L.I.E.
 JOINT UTILITY LOCATION INFORMATION FOR EXCAVATION
 1-800-892-0123
 OR 811

**PROJECT ENGINEER: JOE KANNEL
 UNIT CHIEF: RON WOODSHANK
 TOWNSHIP: DWIGHT, ROUND GROVE,
 SUNBURY, ESMEN**

CONTRACT NO. 66A43

GROSS LENGTH FAP 41 (IL 17) = 45408 FT. = 8.60 MILE
 GROSS LENGTH FAP 786 (IL 170) = 38016 FT. = 7.20 MILE

F.A.P. RTE.	SECTION	COUNTY	TOTAL SHEETS	SHEET NO.
41 & 786	D3 CRACK SEAL 2011-2	LIVINGSTON	6	1
		ILLINOIS	CONTRACT NO. 66A43	



LOCATION OF SECTION INDICATED THUS: —

FUNCTIONAL CLASSIFICATION
 RURAL - OTHER PRINCIPAL ARTERIAL
 FAP ROUTE 317 (US 24)
 2005 ADT = 15100
 P.V. = 75.8 % M.U. = 17.7 % S.U. = 6.5 %
 FAP ROUTE 326 (IL 47)
 2003 ADT = 19800
 P.V. = 69.6 % M.U. = 23.5 % S.U. = 6.9 %

STATE OF ILLINOIS
 DEPARTMENT OF TRANSPORTATION
 DIVISION OF HIGHWAYS

SUBMITTED 3/19 20 10
George Ryan
 DEPUTY DIRECTOR OF HIGHWAYS, REGION ENGINEER

June 25 20 10
Scott E. Stitt, P.E.
 acting ENGINEER OF DESIGN AND ENVIRONMENT

June 25 20 10
Christine M. Reed
 DIRECTOR OF HIGHWAYS, CHIEF ENGINEER

**PRINTED BY THE AUTHORITY
 OF THE STATE OF ILLINOIS**