

F.A.P. RTE.	SECTION	COUNTY	TOTAL SHEETS	SHEET NO.
613	(8D-BR-MI)	BUREAU	6	1
FED. ROAD DIST. NO.	ILLINOIS	CONTRACT NO. 66A53		

INDEX OF SHEETS

1. COVER SHEET
2. GENERAL NOTES
3. SUMMARY OF QUANTITIES
4. TYPICAL SECTION
5. PLAN AND ELEVATION - SN 006-0140
6. REPAIR DETAILS

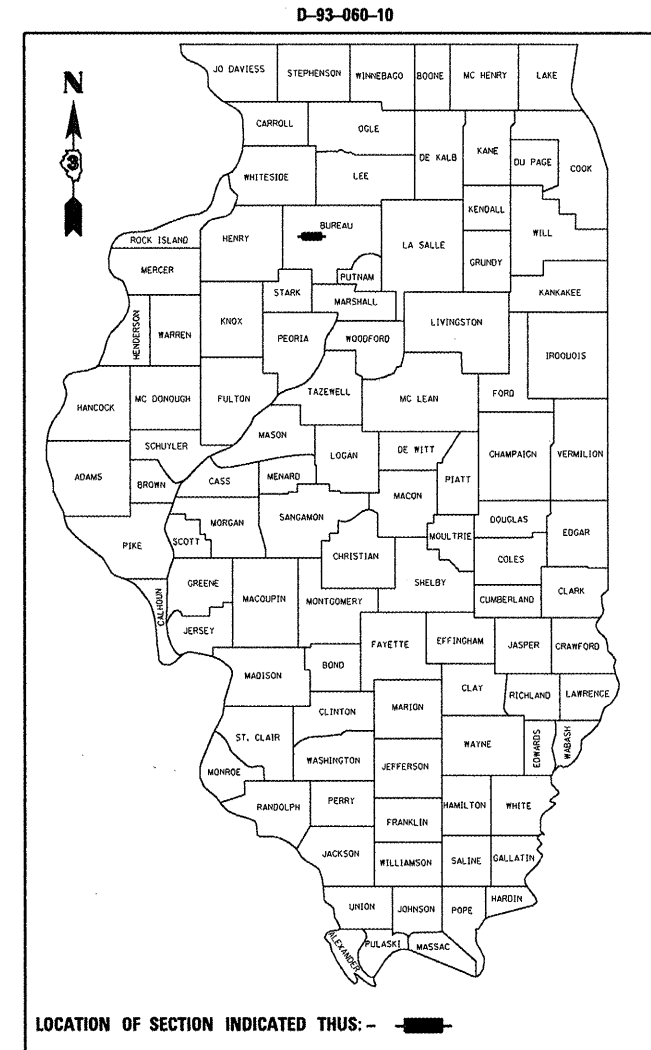
STANDARDS

- | | |
|-----------|--|
| 001006 | DECIMAL OF AN INCH AND OF A FOOT |
| 701001-02 | OFF-ROAD OPERATIONS 2L, 2W, MORE THAN 4.5 m (15') AWAY |
| 701006-03 | OFF-ROAD OPERATIONS 2L, 2W, 4.5 m (15') TO 600 mm (24") FROM PAVEMENT EDGE |
| 701201-03 | LANE CLOSURE, 2L, 2W, DAY ONLY, FOR SPEEDS \geq 45 MPH |
| 701301-03 | LANE CLOSURE, 2L, 2W, SHORT TIME OPERATIONS |
| 701901-01 | TRAFFIC CONTROL DEVICES |

STATE OF ILLINOIS
DEPARTMENT OF TRANSPORTATION
DIVISION OF HIGHWAYS
PROPOSED
HIGHWAY PLANS

FAP ROUTE 613 (US 6/34)
SECTION (8D-BR-MI)

DECK SLAB SUPPORT
AT S.N. 006-0140 CARRYING
FAP ROUTE 613 (US 6/34) OVER COAL CREEK AT
THE WEST EDGE OF SHEFFIELD
BUREAU COUNTY
C-93-152-10



PROJECT LOCATION
S.N. 006-0140

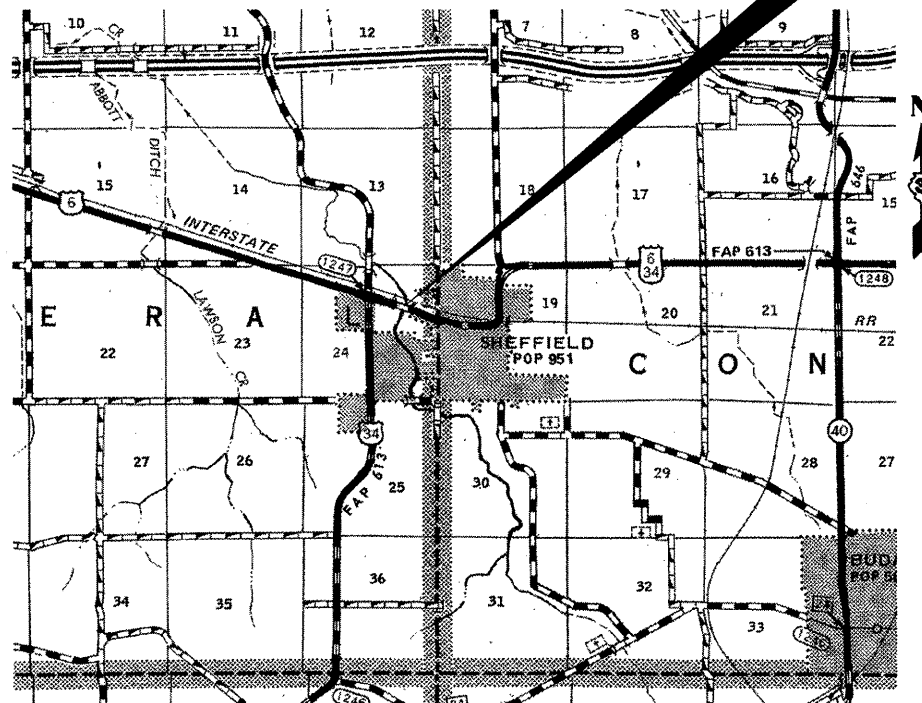
FUNCTIONAL CLASSIFICATION
RURAL - MINOR ARTERIAL
FAP 613 (US 6/34)
2009 ADT
P.V. 85.0% M.U. 9.0% S.U. 6.0%

MICROFILMED _____
REEL NUMBER _____
AWARDED _____
RESIDENT ENGINEER _____
AS BUILT CHANGES WERE MADE
ON THE FOLLOWING SHEETS _____

J.U.L.I.E.
JOINT UTILITY LOCATION INFORMATION FOR EXCAVATION
1-800-892-0123

PROJECT ENGINEER : JOE KANNEL
UNIT CHIEF : RON WOODSHANK
TOWNSHIP : MINERAL

CONTRACT NO. 66A53



LOCATION MAP

NOT TO SCALE
POINT LOCATION

STATE OF ILLINOIS
DEPARTMENT OF TRANSPORTATION
DIVISION OF HIGHWAYS

SUBMITTED 6/4 20 10
Scott E. Stitt
DEPUTY DIRECTOR OF HIGHWAYS, REGION ENGINEER
June 25 20 10
Scott E. Stitt, P.E. / b
Acting ENGINEER OF DESIGN AND ENVIRONMENT
June 25 20 10
Christine M. Reed / b
DIRECTOR OF HIGHWAYS, CHIEF ENGINEER

PRINTED BY THE AUTHORITY
OF THE STATE OF ILLINOIS