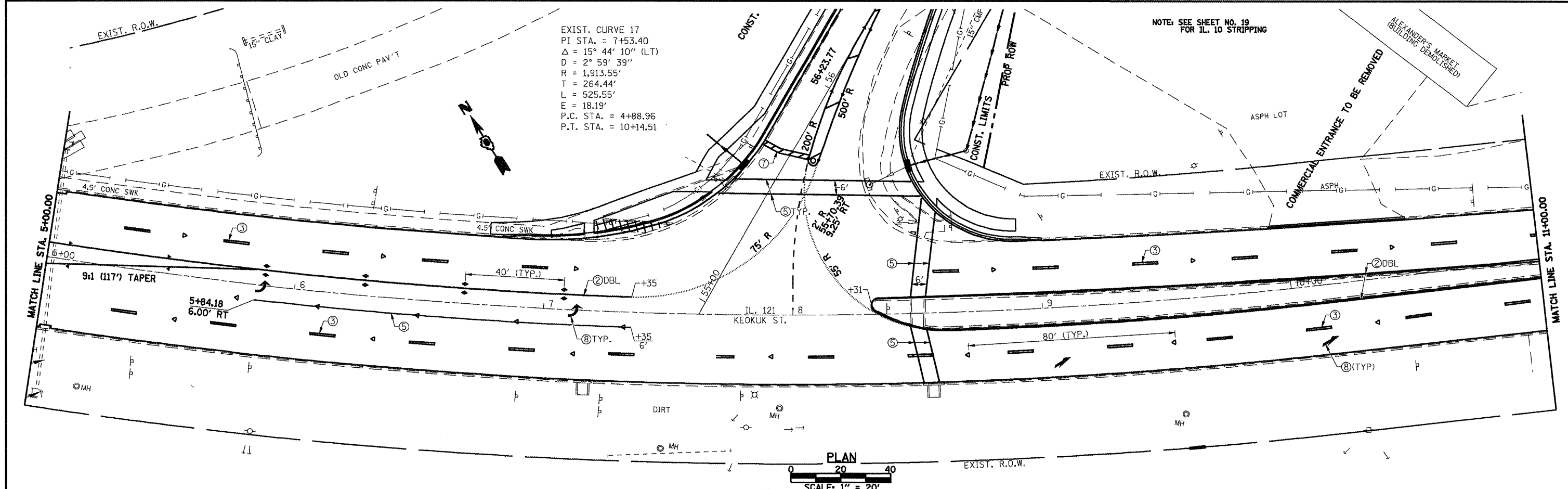


- PREFORMED PLASTIC PAVEMENT MARKING LEGEND**
- ① THERMOPLASTIC PAVEMENT MARKING, - LINE 5" (SOLID WHITE)
  - ② THERMOPLASTIC PAVEMENT MARKING, - LINE 5" (SOLID YELLOW)
  - ③ PREFORMED PLASTIC PAVEMENT MARKING, - TYPE B INLAID LINE 5" (10' DASH, 30' SKIP, WHITE)
  - ④ PREFORMED PLASTIC PAVEMENT MARKING, - TYPE B INLAID LINE 5" (10' DASH, 30' SKIP, YELLOW)
  - ⑤ THERMOPLASTIC PAVEMENT MARKING, - LINE 6" (SOLID WHITE)
  - ⑥ THERMOPLASTIC PAVEMENT MARKING, - LINE 12" (SOLID YELLOW)
  - ⑦ PREFORMED PLASTIC PAVEMENT MARKING, - TYPE B INLAID LINE 24" (SOLID WHITE)
  - ⑧ PREFORMED PLASTIC PAVEMENT MARKING, - TYPE B INLAID LETTERS AND SYMBOLS (WHITE)
  - ⑨ THERMOPLASTIC PAVEMENT MARKING, - LINE 12" (SOLID WHITE)
  - ⑩ PREFORMED PLASTIC PAVEMENT MARKING TYPE B INLAID LINE - 6" (2' DASH 6' SKIP) (WHITE)
- RAISED REFLECTIVE PAVEMENT MARKER LEGEND**
- YELLOW STRIPE
  - WHITE STRIPE
  - ◀ ONE-WAY AMBER MARKER
  - ◀ ONE-WAY CRYSTAL/OPAQUE MARKER
  - ◀ TWO-WAY AMBER MARKER



FILE NAME =	USER NAME = laughlinr1	DESIGNED -	REVISED -	<p><b>Allen Henderson &amp; Associates, Inc.</b> Civil and Structural Engineers Springfield, IL. 62703 Phone: (217)544-8033 IL Design Firm No. 184-001907</p>	<b>STRIPING AND PAVEMENT MARKER PLAN</b>		F.A.P. RTE. =	SECTION	COUNTY	TOTAL SHEETS	SHEET NO.
PLOT SCALE = 40.0000' / IN.	CHECKED -	REVISED -	320				(24Z)RS-4, N 116RS-5	LOGAN	32	23	
PLOT DATE = Mar-18-2010 02:17:17PM	DATE -	REVISED -	REVISED -		SCALE: 1" = 20'	SHEET NO. 23 OF 32 SHEETS	STA. 61+00.00 TO STA. 11+00.00	CONTRACT NO. 72998		ILLINOIS FED. AID PROJECT	
FED. ROAD DIST. NO. ILLINOIS FED. AID PROJECT											