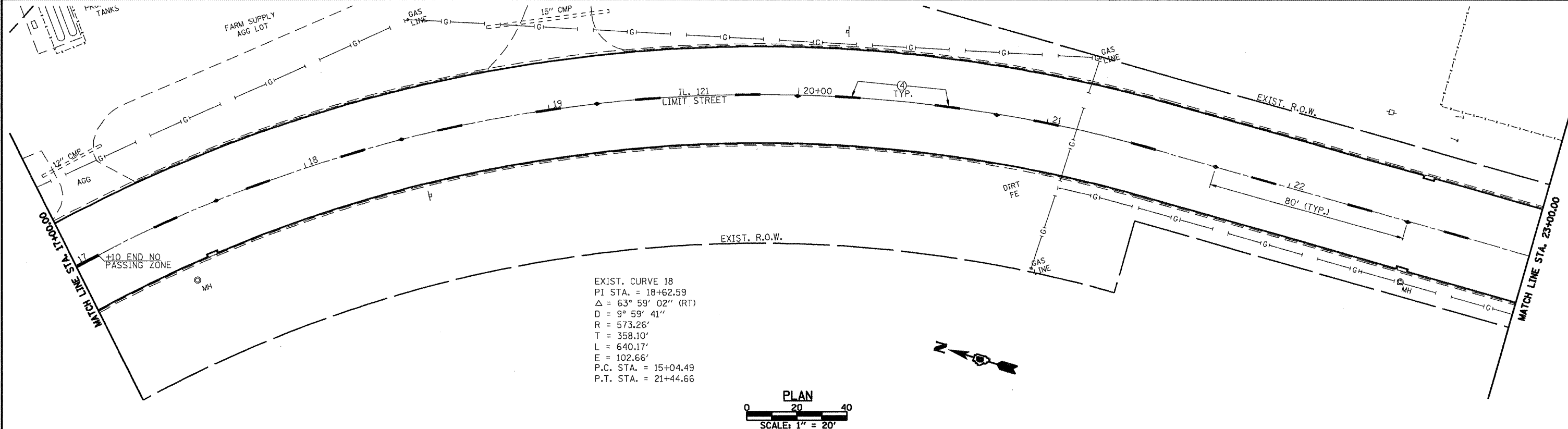
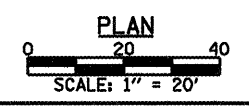
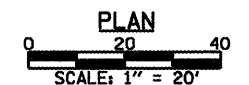


PREFORMED PLASTIC PAVEMENT MARKING LEGEND		RAISED REFLECTIVE PAVEMENT MARKER LEGEND
① THERMOPLASTIC PAVEMENT MARKING, - LINE 5" (SOLID WHITE)	⑥ THERMOPLASTIC PAVEMENT MARKING, - LINE 12" (SOLID YELLOW)	— YELLOW STRIPE
② THERMOPLASTIC PAVEMENT MARKING, - LINE 5" (SOLID YELLOW)	⑦ PREFORMED PLASTIC PAVEMENT MARKING, - TYPE B INLAID LINE 24" (SOLID WHITE)	— WHITE STRIPE
③ PREFORMED PLASTIC PAVEMENT MARKING, - TYPE B INLAID LINE 5" (10' DASH, 30' SKIP, WHITE)	⑧ PREFORMED PLASTIC PAVEMENT MARKING, - TYPE B INLAID LETTERS AND SYMBOLS (WHITE)	◀ ONE-WAY AMBER MARKER
④ PREFORMED PLASTIC PAVEMENT MARKING, - TYPE B INLAID LINE 5" (10' DASH, 30' SKIP, YELLOW)	⑨ THERMOPLASTIC PAVEMENT MARKING, - LINE 12" (SOLID WHITE)	◀ ONE-WAY CRYSTAL/OPAQUE MARKER
⑤ THERMOPLASTIC PAVEMENT MARKING, - LINE 6" (SOLID WHITE)	⑩ PREFORMED PLASTIC PAVEMENT MARKING TYPE B INLAID LINE - 6" (2' DASH 6' SKIP) (WHITE)	◀ TWO-WAY AMBER MARKER



EXIST. CURVE 18  
 PI STA. = 18+62.59  
 $\Delta = 63^\circ 59' 02''$  (RT)  
 $D = 9^\circ 59' 41''$   
 $R = 573.26'$   
 $T = 358.10'$   
 $L = 640.17'$   
 $E = 102.66'$   
 P.C. STA. = 15+04.49  
 P.T. STA. = 21+44.66



FILE NAME =	USER NAME = laughlinr1	DESIGNED -	REVISED -	<b>Allen Henderson &amp; Associates, Inc.</b> Civil and Structural Engineers Springfield, IL 62703 Phone: (217)544-8033 IL Design Firm No. 184-001907	<b>STRIPING AND PAVEMENT MARKER PLAN</b>		F.A.P. RTE.	SECTION	COUNTY	TOTAL SHEETS	SHEET NO.	
		DRAWN -	REVISED -				320	(242)RS-4, Nj 116RS-5	LOGAN	32	24	
		CHECKED -	REVISED -		SCALE: 1" = 20'		SHEET NO. 24 OF 32 SHEETS		STA. 11+00.00 TO STA. 23+00.00		CONTRACT NO. 72998	
		DATE -	REVISED -				FED. ROAD DIST. NO.		ILLINOIS FED. AID PROJECT			

c:\pwwork\VPW1007\LAUGHLINR1\d0181122\d672998-sh-t-plan.dgn