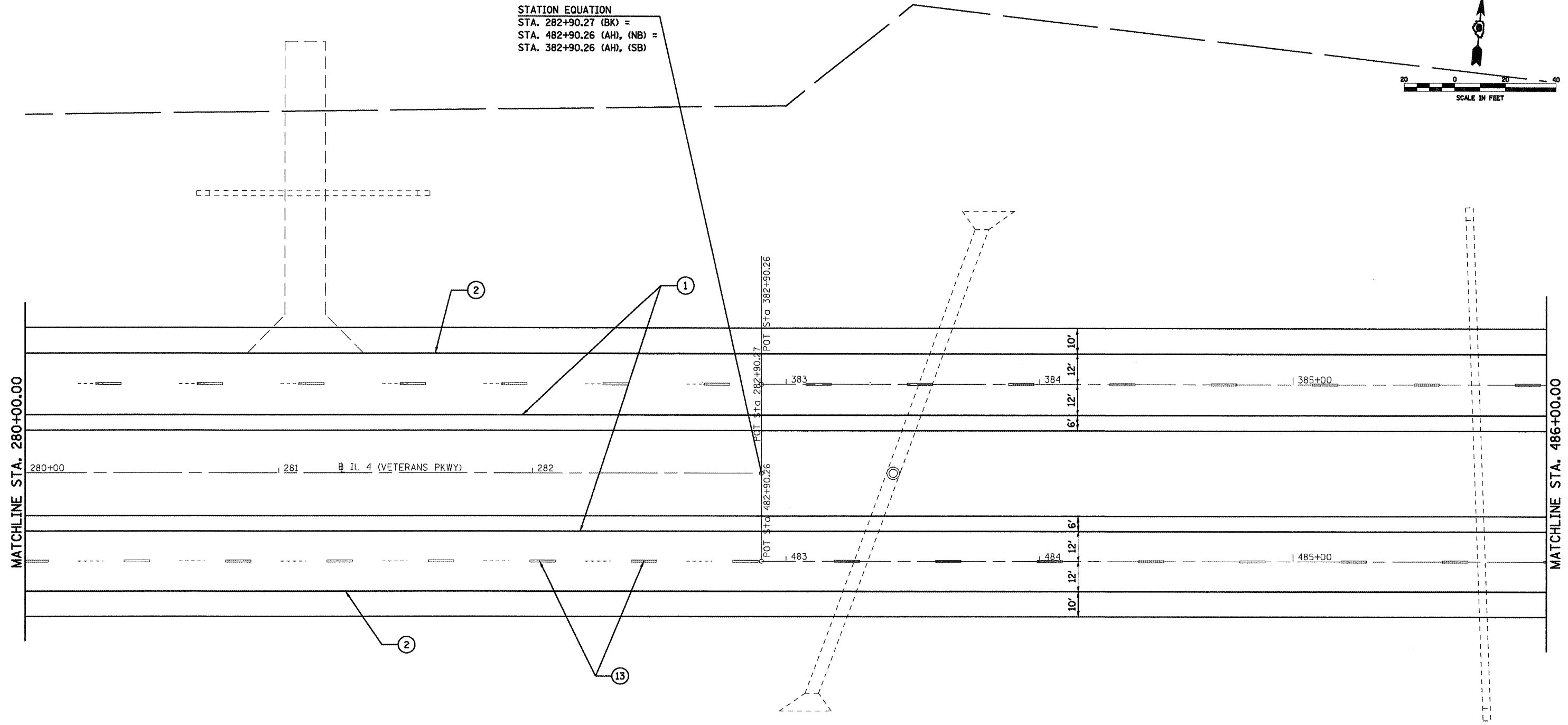
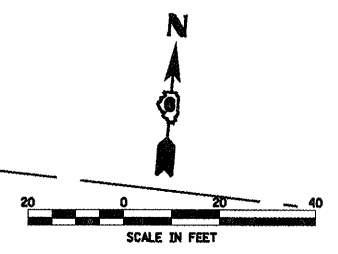


STATION EQUATION
 STA. 282+90.27 (BK) =
 STA. 482+90.26 (AH), (NB) =
 STA. 382+90.26 (AH), (SB)



LEGEND

- | | |
|----------------------------|---|
| ① URETHANE- 5" YELLOW | ⑨ THERMOPLASTIC- 12" YELLOW |
| ② URETHANE- 5" WHITE | ⑩ THERMOPLASTIC- 12" WHITE |
| ③ URETHANE- 8" WHITE | ⑪ PREFORMED PLASTIC TYPE B- INLAID- LETTERS AND SYMBOLS |
| ④ URETHANE- 12" YELLOW | ⑫ PREFORMED PLASTIC TYPE B- INLAID - 5" YELLOW |
| ⑤ URETHANE-12" WHITE | ⑬ PREFORMED PLASTIC TYPE B- INLAID - 5" WHITE |
| ⑥ THERMOPLASTIC- 5" YELLOW | ⑭ PREFORMED PLASTIC TYPE B- INLAID - 6" WHITE |
| ⑦ THERMOPLASTIC- 5" WHITE | ⑮ PREFORMED PLASTIC TYPE B- INLAID - 24" WHITE |
| ⑧ THERMOPLASTIC- 8" WHITE | |

FILE NAME =	USER NAME = laughlin1	DESIGNED -	REVISED -
ca:\pwork\PWIDGT\LAUGHLINRL\dms47718\372C35-shp\plan-14.dgn		DRAWN -	REVISED -
	PLOT SCALE = 40.0000' / IN.	CHECKED -	REVISED -
	PLOT DATE = Apr-30-2010 02:34:00PM	DATE -	REVISED -

**STATE OF ILLINOIS
 DEPARTMENT OF TRANSPORTATION**

PLAN VIEW - SECTION "B" (IL 4 /VETERANS PKWY)

SCALE: SHEET NO. 18 OF 20 SHEETS STA. TO STA.

F.A.P. RTE. 658	SECTION •	COUNTY SANGAMON	TOTAL SHEETS 206	SHEET NO. 102
CONTRACT NO. 72C35				
ILLINOIS FED. AID PROJECT				