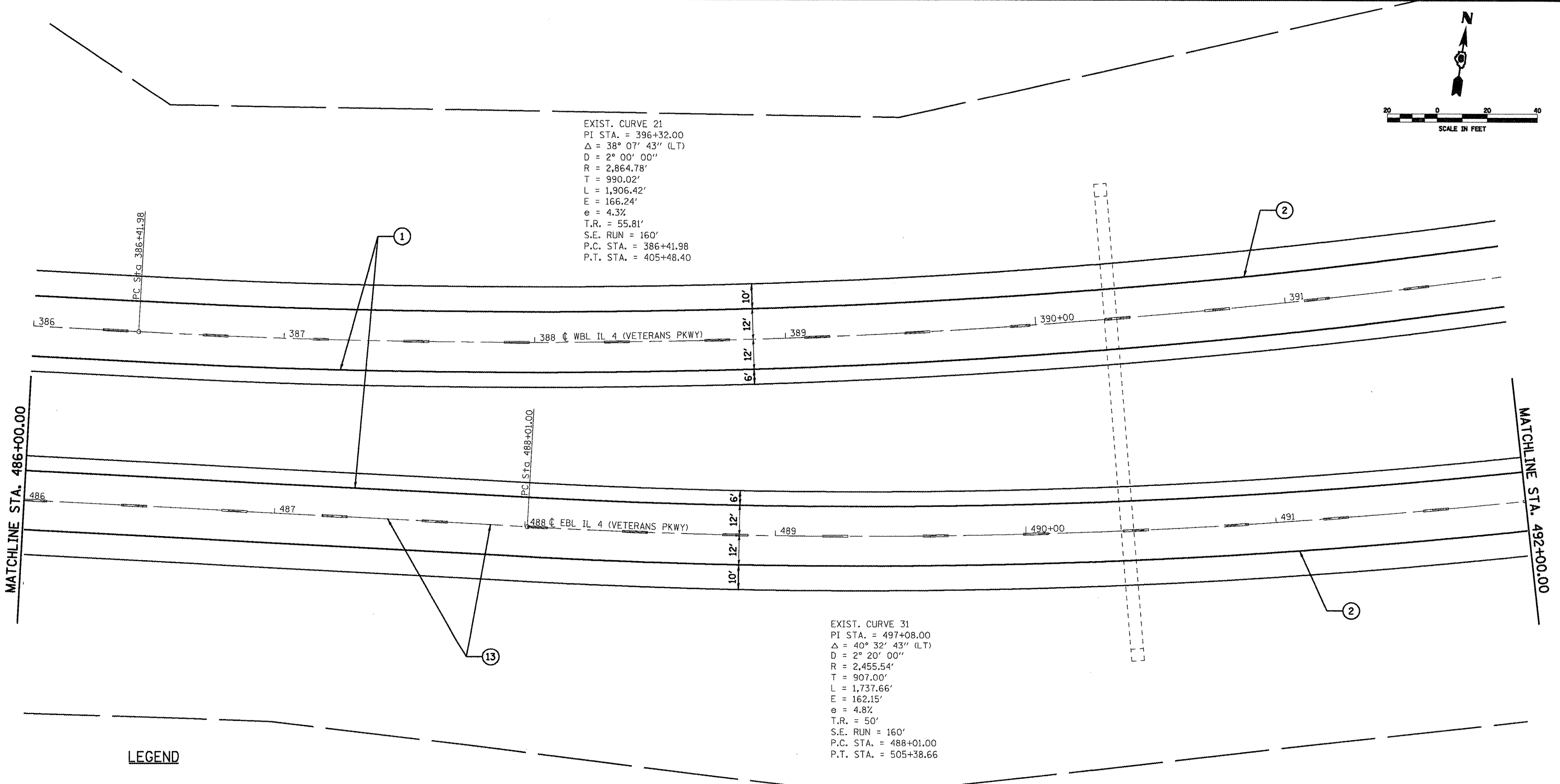


EXIST. CURVE 21
 PI STA. = 396+32.00
 $\Delta = 38^\circ 07' 43''$ (LT)
 $D = 2^\circ 00' 00''$
 $R = 2,864.78'$
 $T = 990.02'$
 $L = 1,906.42'$
 $E = 166.24'$
 $e = 4.3\%$
 $T.R. = 55.81'$
 $S.E. RUN = 160'$
 P.C. STA. = 386+41.98
 P.T. STA. = 405+48.40

EXIST. CURVE 31
 PI STA. = 497+08.00
 $\Delta = 40^\circ 32' 43''$ (LT)
 $D = 2^\circ 20' 00''$
 $R = 2,455.54'$
 $T = 907.00'$
 $L = 1,737.66'$
 $E = 162.15'$
 $e = 4.8\%$
 $T.R. = 50'$
 $S.E. RUN = 160'$
 P.C. STA. = 488+01.00
 P.T. STA. = 505+38.66



LEGEND

- | | |
|----------------------------|---|
| ① URETHANE- 5" YELLOW | ⑨ THERMOPLASTIC- 12" YELLOW |
| ② URETHANE- 5" WHITE | ⑩ THERMOPLASTIC- 12" WHITE |
| ③ URETHANE- 8" WHITE | ⑪ PREFORMED PLASTIC TYPE B- INLAID- LETTERS AND SYMBOLS |
| ④ URETHANE- 12" YELLOW | ⑫ PREFORMED PLASTIC TYPE B- INLAID - 5" YELLOW |
| ⑤ URETHANE-12" WHITE | ⑬ PREFORMED PLASTIC TYPE B- INLAID - 5" WHITE |
| ⑥ THERMOPLASTIC- 5" YELLOW | ⑭ PREFORMED PLASTIC TYPE B- INLAID - 6" WHITE |
| ⑦ THERMOPLASTIC- 5" WHITE | ⑮ PREFORMED PLASTIC TYPE B- INLAID - 24" WHITE |
| ⑧ THERMOPLASTIC- 8" WHITE | |

FILE NAME = c:\pwork\pwork\WIDOT\LAUGHLINRL\dms47710	USER NAME = laughlinr1 372C35-ahp1on-14.dgn	DESIGNED - DRAWN -	REVISED - REVISED -	STATE OF ILLINOIS DEPARTMENT OF TRANSPORTATION	PLAN VIEW - SECTION "B" (IL 4 /VETERANS PKWY)		F.A.P. RTE. 658	SECTION •	COUNTY SANGAMON	TOTAL SHEETS 206	SHEET NO. 103	
PLOT SCALE = 40.0000' / IN.					CHECKED -	REVISED -	SCALE:		CONTRACT NO. 72C35		ILLINOIS FED. AID PROJECT	
PLOT DATE = Apr-30-2010 02:34:06PM					DATE -	REVISED -	SHEET NO. 19 OF 20 SHEETS		STA. TO STA.			
• 1-1(RS,TS-1127RS-6,79Z&102RS-4												