

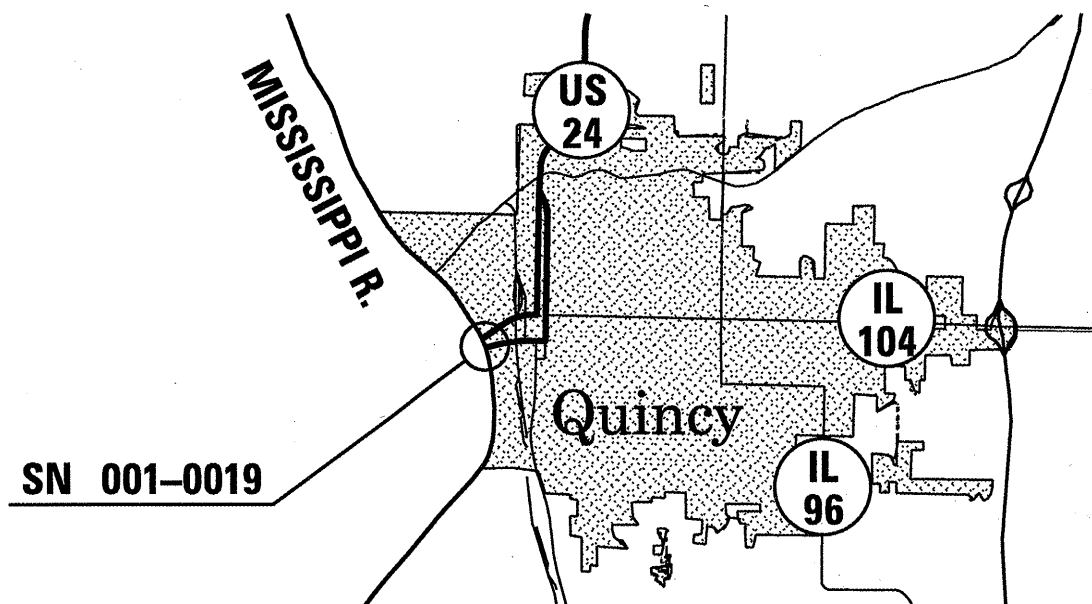
STATE OF ILLINOIS
DEPARTMENT OF TRANSPORTATION
DIVISION OF HIGHWAYS

**PROPOSED
HIGHWAY PLANS**

FAP ROUTE 63 (US 24)
SECTION (1ZB)I-4

BRIDGE JOINT REPAIR
ADAMS COUNTY
C-96-184-10

FOR INDEX OF SHEETS, SEE SHEET NO. 2



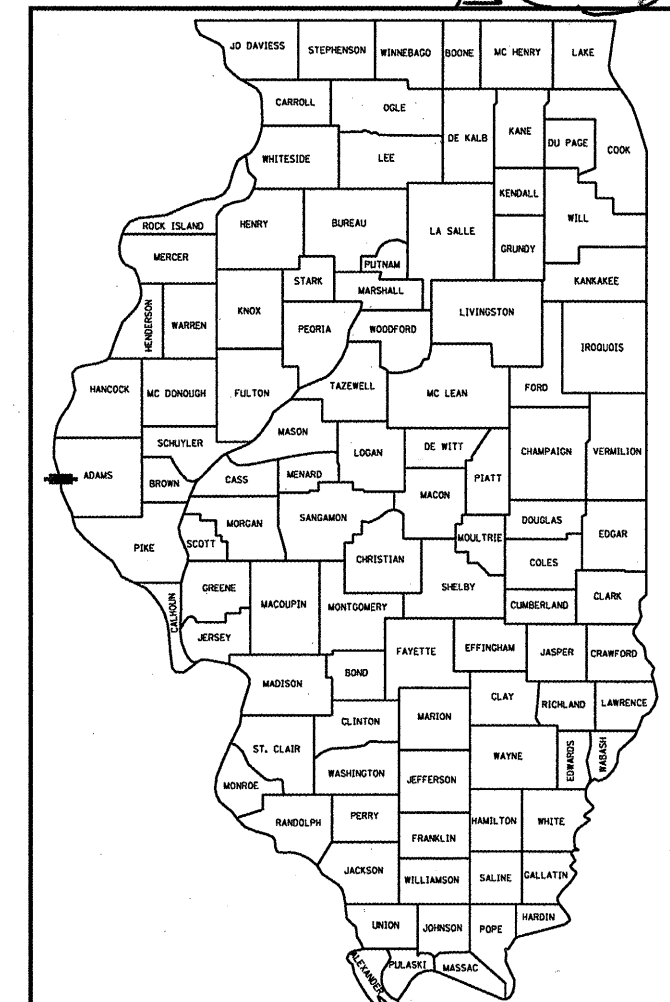
NET LENGTH = 3512 FT. = 0.67 MILE

ADT = 8500

F.A.P. RTE.	SECTION	COUNTY	TOTAL SHEETS	SHEET NO.
63	(1ZB)I-4	ADAMS	8	1
FED. ROAD DIST. NO. 6		ILLINOIS	CONTRACT NO. 72D53	

C-96-184-10

** 1 / 9*



LOCATION OF SECTION INDICATED THUS: -

J.U.L.I.E.
JOINT UTILITY LOCATION INFORMATION FOR EXCAVATION
1-800-892-0123
OR 811

D6 BRIDGE MAINTENANCE ENGINEER -
STEVE BERAN (217) 785-9290
D6 BRIDGE INSPECTION ENGINEER -
DAVE COPENBARGER (217) 785-5306

CONTRACT NO. 72D53

STATE OF ILLINOIS
DEPARTMENT OF TRANSPORTATION
DIVISION OF HIGHWAYS

SUBMITTED *March 30 2010*
By Z. Dink
DEPUTY DIRECTOR OF HIGHWAYS, REGION ENGINEER

May 7 2010
Scott E. Stitt, P.E. lsc
ENGINEER OF DESIGN AND ENVIRONMENT

May 7 2010
Christine M. Reed lsc
DIRECTOR OF HIGHWAYS, CHIEF ENGINEER

PRINTED BY THE AUTHORITY
OF THE STATE OF ILLINOIS

Rev. 5-26-10

INDEX OF SHEETS

- 1 COVER SHEET
- 2 INDEX, STANDARDS, & GENERAL NOTES
- 3 SUMMARY OF QUANTITIES
- 4 SCHEDULES OF QUANTITIES
- 5 BRIDGE PLAN AND ELEVATION
- 6 MAXIMUM WIDTH SIGNING PLAN
- 7 DECK PATCHING DETAIL
- 8 EXPANSION JOINT DETAILS

STANDARDS

- 701101-02
- 701106-02
- 701421-02
- 701422-02
- 701901-01

8A. Bridge Drainage System Details

Route FAP 63 (US 24)
Section (IZB) I-4
County Adams

DISTRICT SIX

EXAMINED MARCH 9 20 10
[Signature]
OPERATIONS ENGINEER

Route FAP 63 (US 24)
Section (IZB) I-4
County Adams

EXAMINED MARCH 30 20 10
[Signature]
PROGRAM IMPLEMENTATION ENGINEER

EXAMINED March 10 20 10
[Signature]
PROGRAM DEVELOPMENT ENGINEER

GENERAL NOTES:

WORK ZONE SPEED LIMIT SIGNS DETAILED IN THE TRAFFIC CONTROL STANDARDS SHALL BE CHANGED FROM 45 MPH TO 35 MPH.

THE REMOVAL OF THE EXISTING POLYMER CONCRETE AND ALL EXISTING JOINT MATERIAL SHALL BE INCLUDED IN THE COST FOR POLYMER CONCRETE.

PLAN DIMENSIONS AND DETAILS RELATIVE TO EXISTING PLANS ARE SUBJECT TO NOMINAL CONSTRUCTION VARIATIONS. THE CONTRACTOR SHALL FIELD VERIFY EXISTING DIMENSIONS AND DETAILS AFFECTING NEW CONSTRUCTION AND MAKE NECESSARY APPROVED ADJUSTMENTS PRIOR TO CONSTRUCTION OR ORDERING OF MATERIALS. SUCH VARIATIONS SHALL NOT BE CAUSE FOR ADDITIONAL COMPENSATION FOR A CHANGE IN SCOPE OF WORK. HOWEVER, THE CONTRACTOR WILL BE PAID FOR THE QUANTITY ACTUALLY FURNISHED BASED UPON THE UNIT PRICE BID FOR THE WORK.

ASPHALT MIXTURE TABLE				
MIX USE	PG	DESIGN AIR VOIDS	MIXTURE COMPOSITION (GRADATION MIXTURE)	FRICTION AGGREGATE
INCIDENTAL HMA SURF.	PG64-22	4.0% @ N DESIGN = 70	IL 9.5	MIX "D"

INDEX, STDS, & GENERAL NOTES
FAP 63 (US 24)
SECTION (IZB) I-4
ADAMS COUNTY

Rev. 5-26-10

S U M M A R Y O F Q U A N T I T I E S

CODE NO.	ITEM	UNIT	100% STATE
			SFTY-2A
			TOTAL QTY
40800020	BITUMINOUS MATERIALS (PRIME COAT)	TON	0.1
40800050	INCIDENTAL HOT-MIX ASPHALT SURFACING	TON	12
44000915	HOT-MIX ASPHALT SURFACE REMOVAL (DECK)	SQ YD	214
67100100	MOBILIZATION	L SUM	1
70100310	TRAFFIC CONTROL AND PROTECTION, STANDARD 701421	L SUM	1
70100320	TRAFFIC CONTROL AND PROTECTION, STANDARD 701422	L SUM	1
X0320887	POLYMER CONCRETE	CU FT	41.4
X0322932	SILICONE JOINT SEALER, 1.5"	FOOT	861
X7200201	WIDTH RESTRICTION SIGNING	L SUM	1
Z0018800	DRAINAGE SYSTEM	L SUM	1

1

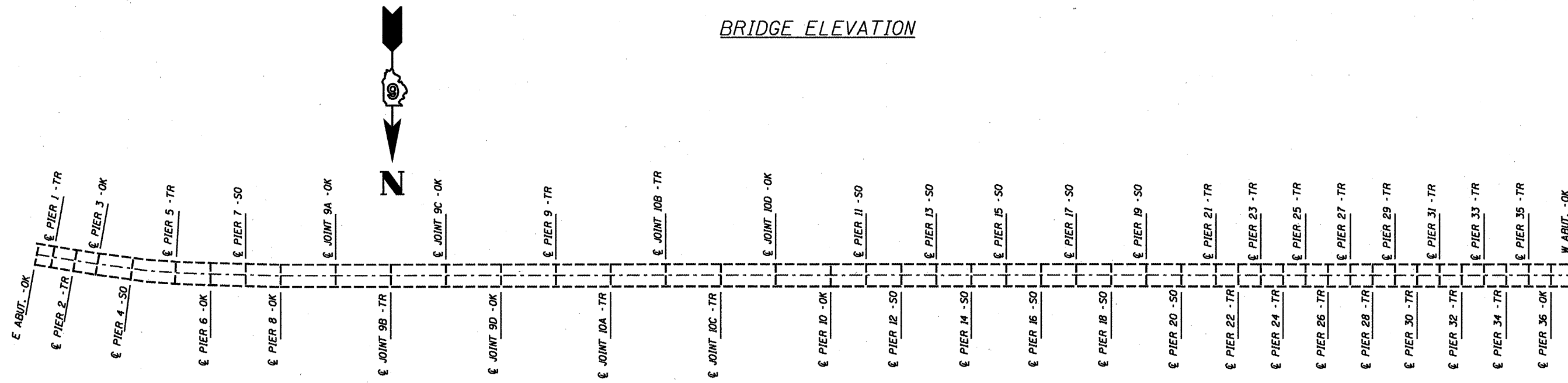
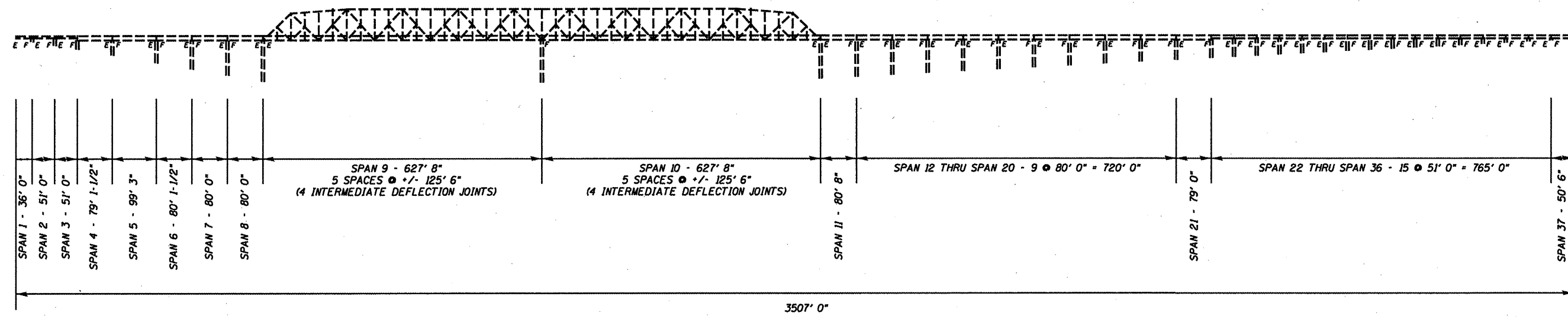
Rev. 5-27-10

QUANTITIES
FAP 63 (US 24)
SECTION (IZB)I-4
ADAMS COUNTY

JOINT REPAIR SCHEDULE		
JOINT	POLYMER CONCRETE (CU FT)	SILICONE JT. SEALER (FOOT)
E ABUT.	0	0
PIER 1	1.8	24.6
PIER 2	1.8	24.6
PIER 3	0	0
PIER 4	0	24.6
PIER 5	1.8	24.6
PIER 6	0	0
PIER 7	0	24.6
PIER 8	0	0
9A	0	0
9B	1.8	24.6
9C	0	0
9D	0	0
PIER 9	1.8	24.6
10A	1.8	24.6
10B	1.8	24.6
10C	1.8	24.6
10D	0	0
PIER 10	0	0
PIER 11	0	24.6
PIER 12	0	24.6
PIER 13	0	24.6
PIER 14	0	24.6
PIER 15	0	24.6
PIER 16	0	24.6
PIER 17	0	24.6
PIER 18	0	24.6
PIER 19	0	24.6
PIER 20	0	24.6
PIER 21	1.8	24.6
PIER 22	1.8	24.6
PIER 23	1.8	24.6
PIER 24	1.8	24.6
PIER 25	1.8	24.6
PIER 26	1.8	24.6
PIER 27	1.8	24.6
PIER 28	1.8	24.6
PIER 29	1.8	24.6
PIER 30	1.8	24.6
PIER 31	1.8	24.6
PIER 32	1.8	24.6
PIER 33	1.8	24.6
PIER 34	1.8	24.6
PIER 35	1.8	24.6
PIER 36	0	0
W ABUT.	0	0
TOTALS	41.4	861

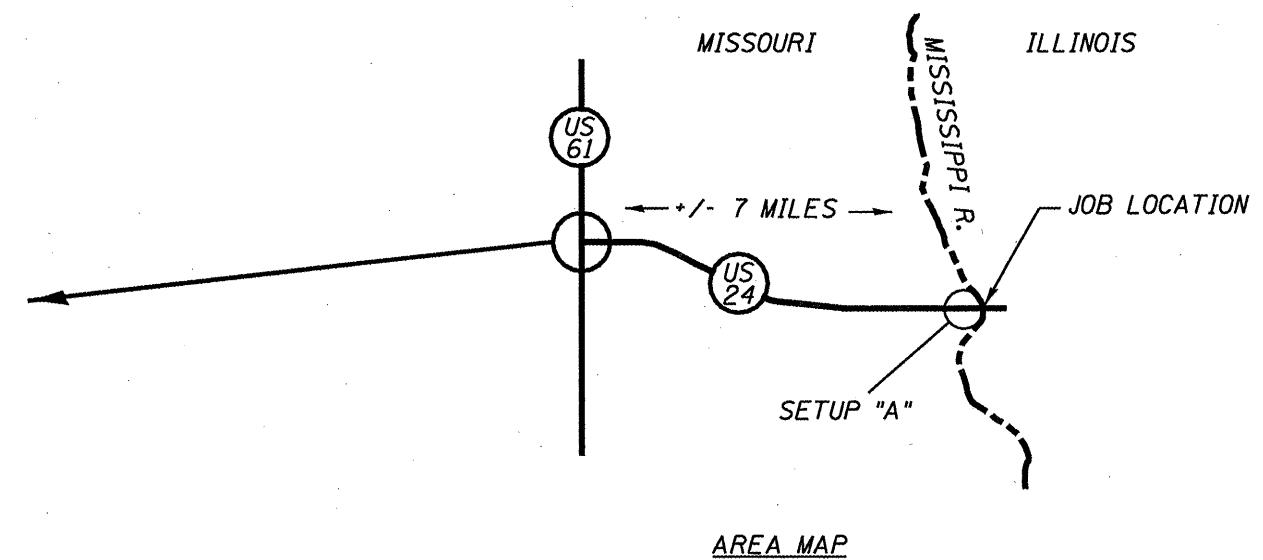
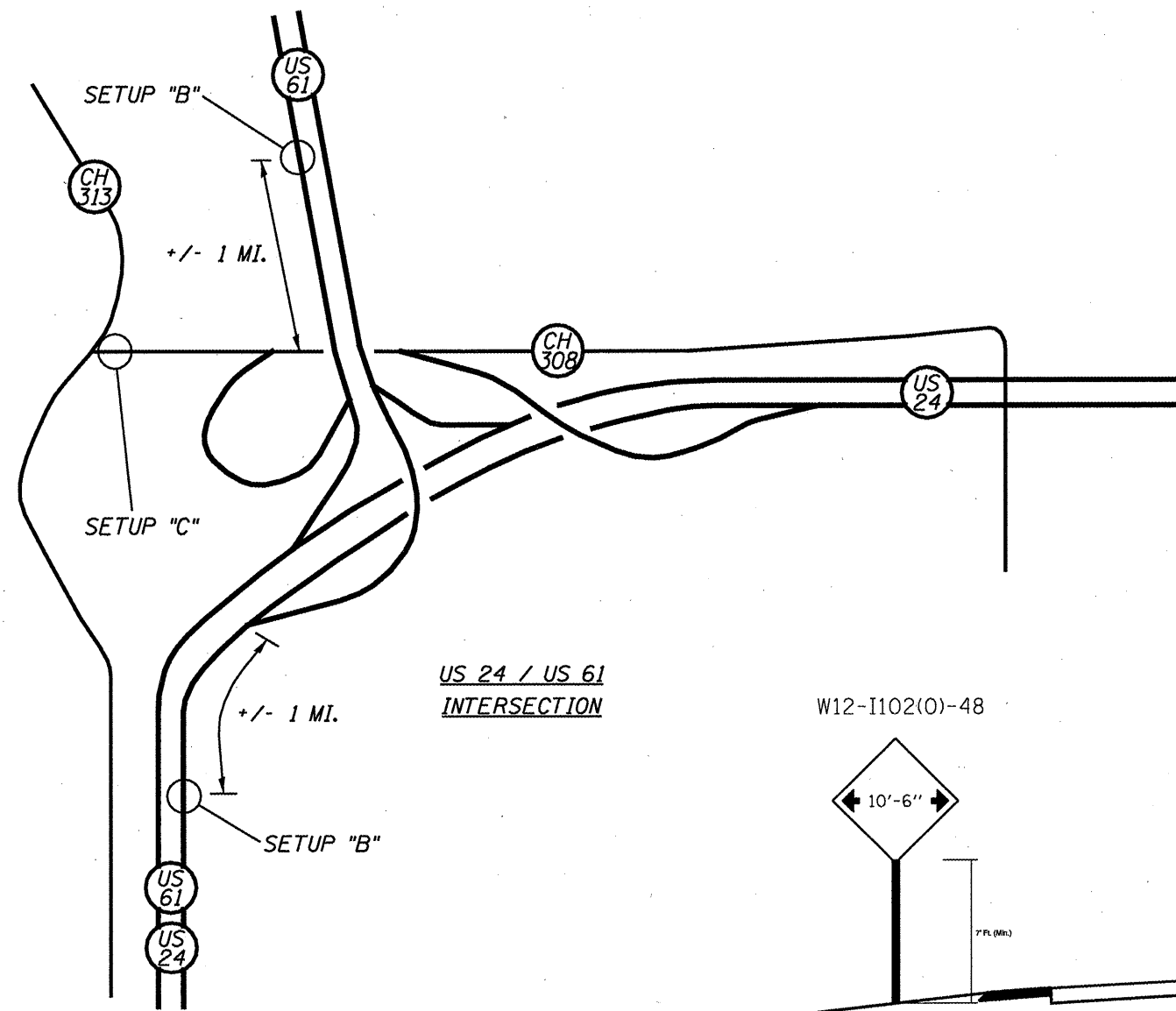
DECK SURFACE PATCHING SCHEDULE			
SPAN	HMA SURF. REM. (DECK) (SQ YD)	INCIDENTAL HMA SURF. (TON)	BIT. MATL. (PRIME CT.) (TON)
9	66.7	3.7	0.03
10	146.7	8.3	0.06
TOTALS	213.4	12.0	0.09

SCHEDULES OF QUANTITIES
FAP 63 (US 24)
SECTION (12B)I-4
ADAMS COUNTY

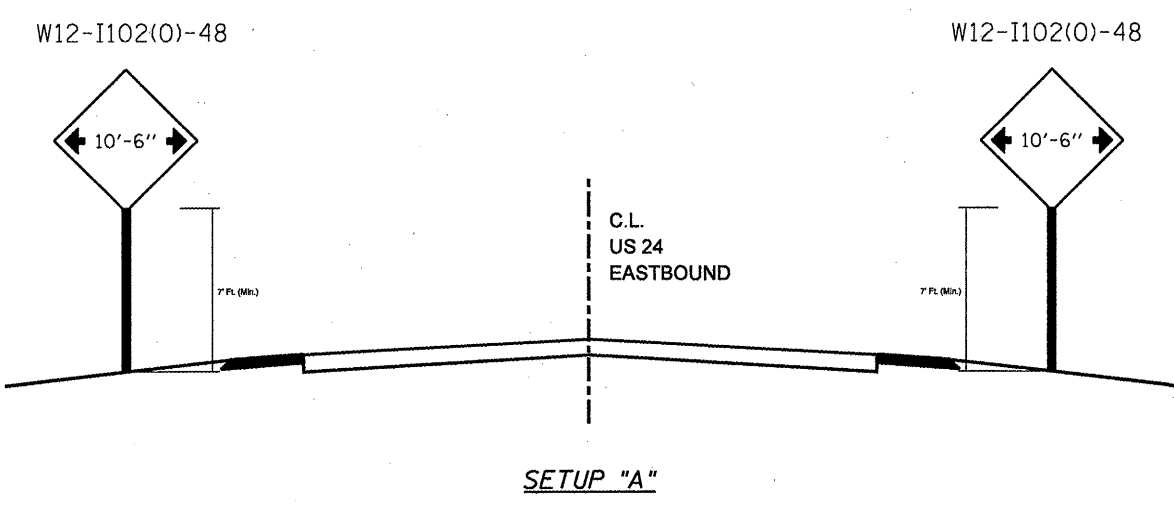


JOINT LABELING LEGEND
OK - NO REPAIRS NEEDED
TR - TOTAL JOINT REPLACEMENT
SO - REPLACE SILICONE AND BACKER ROD ONLY

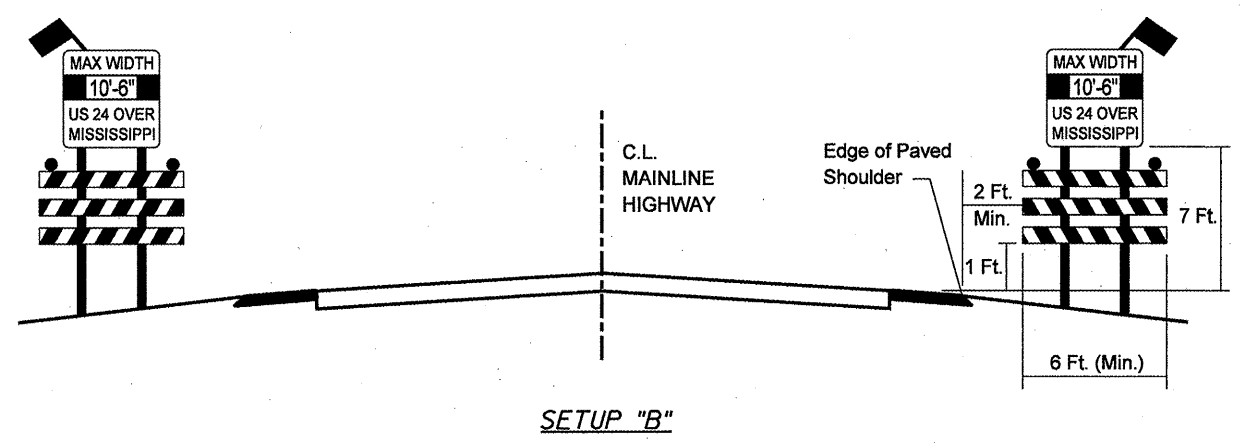
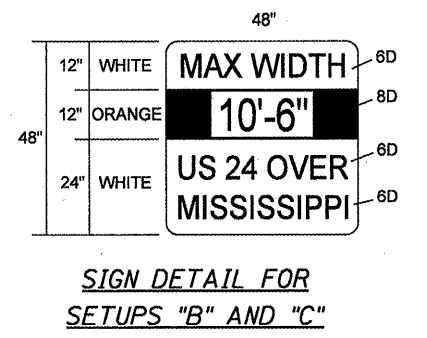
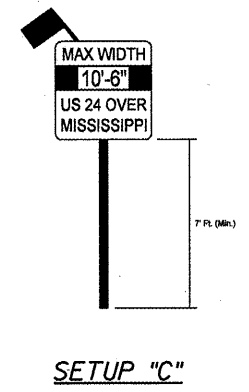
BRIDGE PLAN & ELEVATION
FAP 63 (US 24)
SECTION (12B)I-4
ADAMS COUNTY



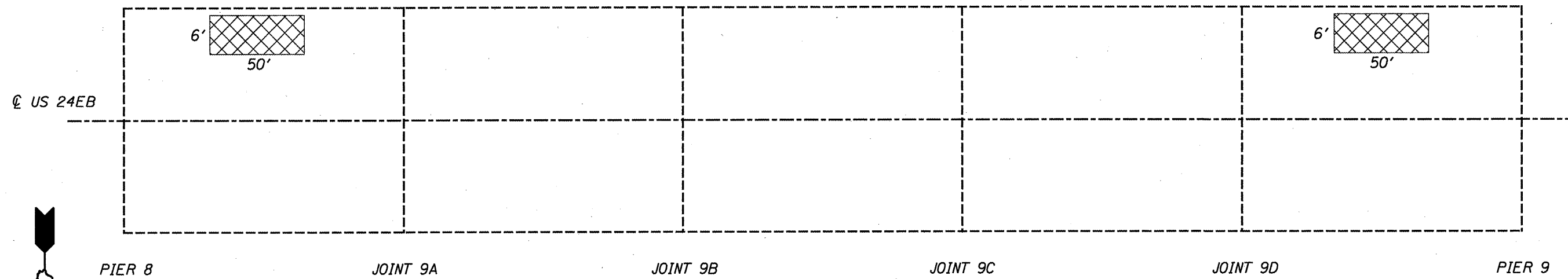
US 24 / US 61
INTERSECTION



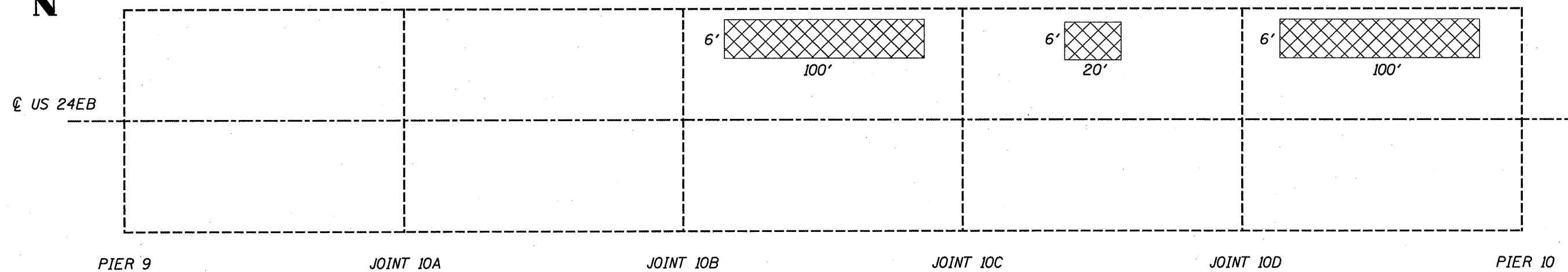
NOTES:
SIGNS DETAILED IN SETUP "A" SHALL BE PLACED 1000' AHEAD OF THE W20-5(0)-48. "LANE CLOSED 1/2 MILE" SIGNS DETAILED IN STANDARD 701422.
WORK ZONE SPEED LIMIT SIGNS DETAILED IN THE TRAFFIC CONTROL STANDARDS SHALL BE CHANGED FROM 45 MPH TO 35 MPH.



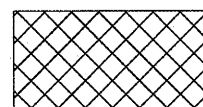
MAXIMUM WIDTH SIGNING PLAN
FAP 63 (US 24)
SECTION (12B)I-4
ADAMS COUNTY



SPAN 9 PLAN



SPAN 10 PLAN



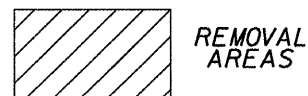
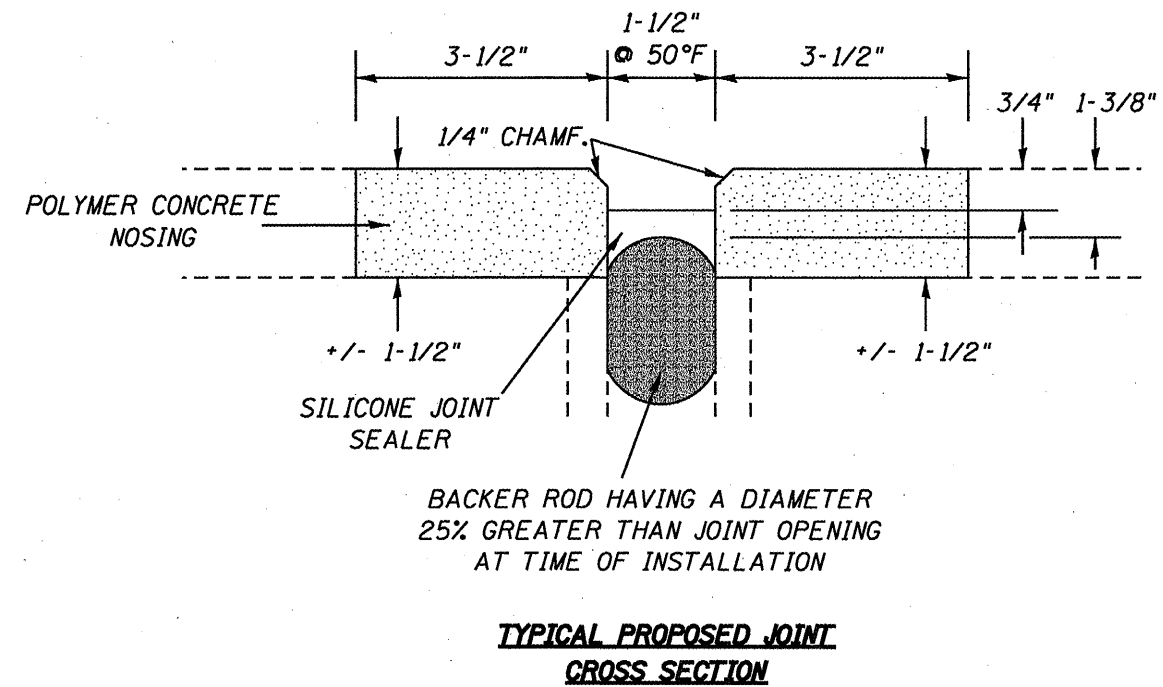
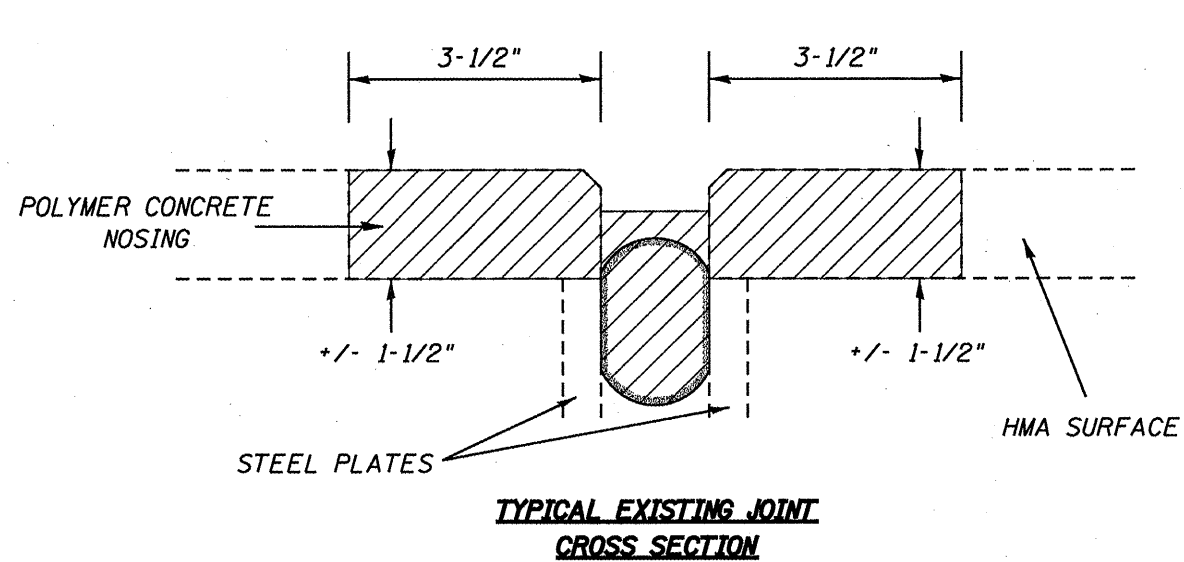
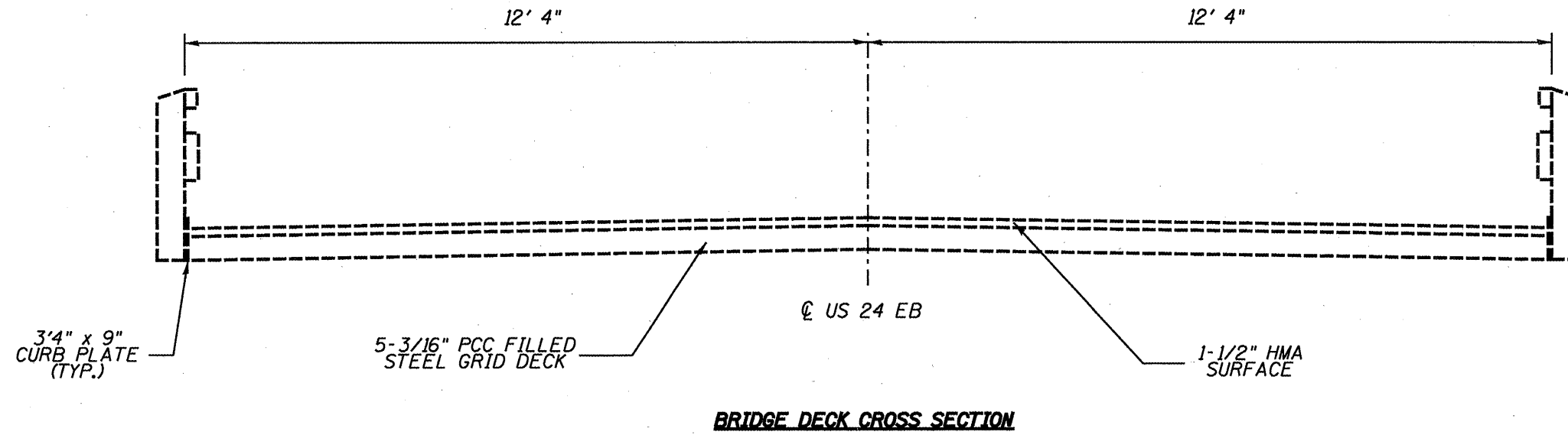
PATCH
LOCATIONS

NOTES:

PATCHES SHALL BE LAID OUT BY THE ENGINEER PRIOR TO PATCH REMOVAL.

PATCHES SHALL BE MILLED +/- 1-1/4", CLEANED, PRIMED, AND REFILLED WITH INCIDENTAL HMA SURFACE. CARE SHALL BE TAKEN NOT TO DISTURB THE EXISTING WATERPROOF MEMBRANE UNDER THE ASPHALT DURING MILLING AND CLEANING. ANY DAMAGE TO THE WATERPROOF MEMBRANE SHALL BE REPAIRED AT THE CONTRACTOR'S EXPENSE.

DECK PATCHING DETAIL
FAP 63 (US 24)
SECTION (12B)I-4
ADAMS COUNTY



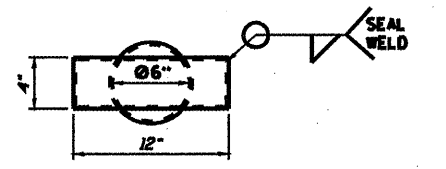
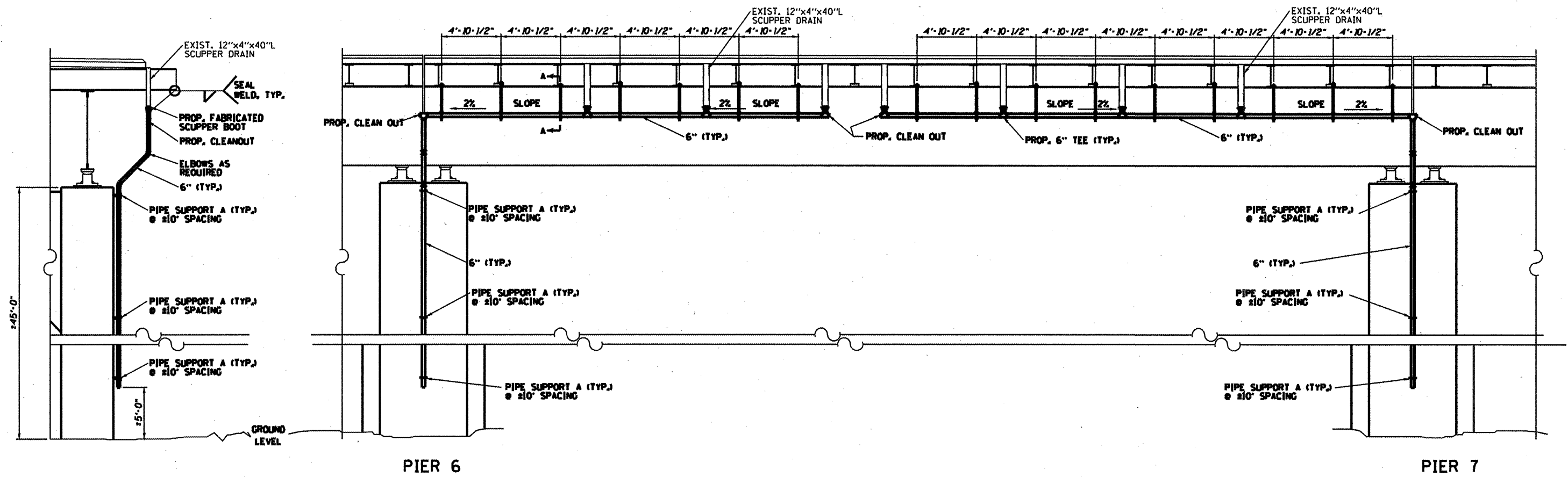
NOTES:

THE COST OF REMOVING THE EXISTING SILICONE JOINT SEALER AND BACKER ROD SHALL BE INCLUDED IN THE UNIT BID PRICE FOR SILICONE JOINT SEALER, 1.5".

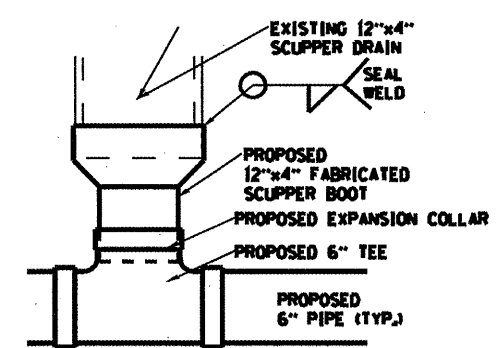
EXPANSION JOINT DETAILS
FAP 63 (US 24)
SECTION (12B)I-4
ADAMS COUNTY

CONTRACT NO. 72053				
F.A.P. RYE	SECTION	COUNTY	TOTAL SHEETS	SHEET NO.
63	(12B)-4	ADAMS	8	84
FED. ROAD DIST. NO. ILLINOIS FED. AID PROJECT				

SPAN 7

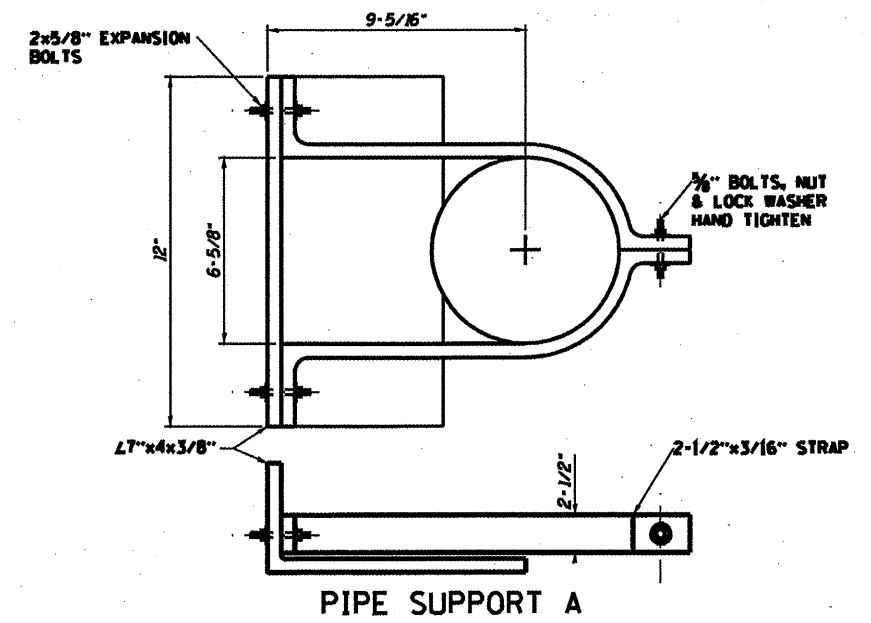


TOP VIEW SCUPPER BOOT

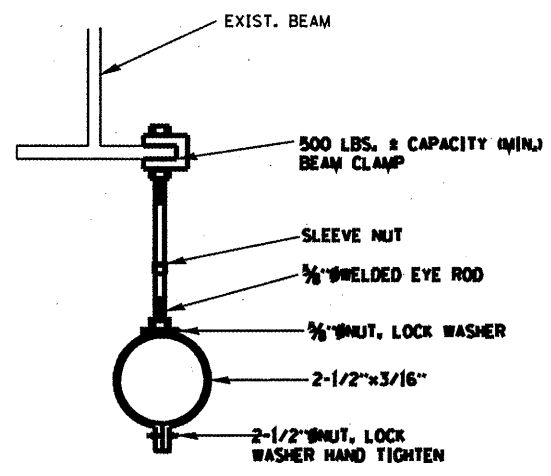


FABRICATED SCUPPER BOOT

CONTRACTOR SHALL FIELD VERIFY DRAINAGE SCUPPER DIMENSIONS BEFORE FABRICATING SCUPPER BOOT



PIPE SUPPORT A



SECTION A-A PIPE HANGER

NOTES:

1. THE DRAINAGE SYSTEM SHALL BE INSTALLED ON THE NORTH SIDE OF SPAN 7 TO DIVERT WATER FROM THE ROOF OF THE QUINCY WATER PLANT.
2. TO GAIN ACCESS TO THE WATER PLANT PREMISES CONTACT ADAM BARNARD OR PAT MURRY AT (217)228-4590.
3. ALL EXTERIOR SURFACES OF THE PIPE AND FITTINGS SHALL BE THE LIGHT GRAY MUNSSELL 10Y 7/1 LIGHT GRAY.
4. PIPE HANGERS SHALL BE PROVIDED ON ALL HORIZONTAL PIPES AT EACH TEE, ELBOW, OR CHANGE IN DIRECTION AND AT THE INTERMEDIATE POINTS NOT MORE THAN 5'-0" ON CENTERS.
5. THE CONTRACTOR MAY USE ALTERNATE PIPE HANGERS, THE PIPE HANGERS SHALL HAVE A LOAD CAPACITY OF NOT LESS THAN 500 LBS. AND SHALL BE DESIGNED SO AS NOT TO APPLY EXCESSIVE COMPRESSIVE STRESS TO THE PIPE. ALTERNATE PIPE HANGER DESIGNS MUST BE APPROVED BY THE ENGINEER PRIOR TO USE.

REVISIONS	
NAME	DATE

ILLINOIS DEPARTMENT OF TRANSPORTATION
 BRIDGE DRAINAGE SYSTEM
 FAP 63 (U.S. 24)
 SECTION (12B)-4
 ADAMS COUNTY

SCALE: VERT. _____
 HORIZ. _____
 DATE 05/24/2010

DRAWN BY TDS
 CHECKED BY SWB

Added sheet 5-26-10

DATE
 FILE NAME
 PLOT SCALE
 USER NAME