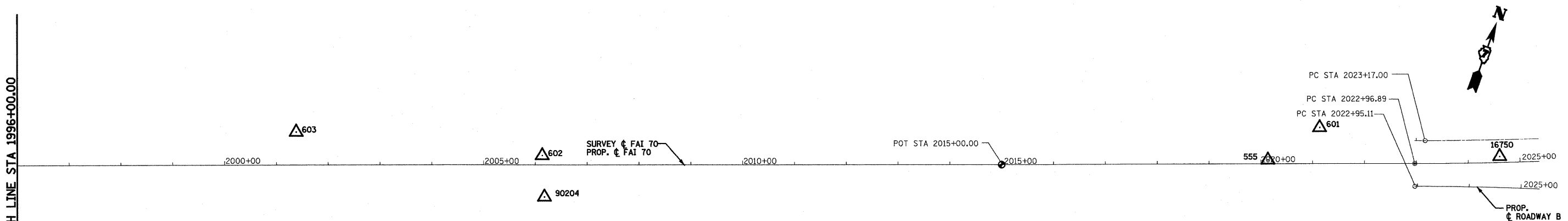
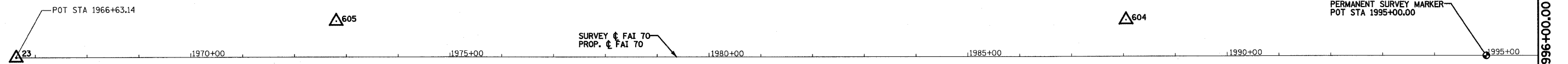


EXIST. SURVEY \odot FAI 70
 EXIST. CURVE WEST1
 PI STA. = 2059+53.47
 Δ = 55° 59' 40" (LT)
 D = 0° 49' 59"
 R = 6,877.84'
 T = 3,656.59'
 L = 6,721.63'
 E = 911.60'
 P.C. STA. = 2022+96.89
 P.T. STA. = 2090+18.51



BENCHMARK 552:
 CHISELED SQUARE ON TOP OF CENTER
 BASE OF EXIT 92 INTERSTATE 57
 CHICAGO MEMPHIS 1 MILE
 STA. 1981+01
 ELEV 549.25

BENCHMARK 2020:
 CHISELED SQUARE NORTHEAST CORNER
 OF CONCRETE DROP INLET JUST WEST
 OF SOUTH TRI-LEVEL IN MEDIAN
 STA. 2020+00
 ELEV 521.68

BENCHMARK 551:
 CHISELED SQUARE ON TOP OF SLOPE
 WALL ON EAST SIDE OF LITTLE WABASH
 RIVER STA 2005+75, 25.7' OFF OF CENTERLINE
 I-70 WEST
 ELEV 521.58

SURVEY \odot FAI 70

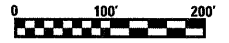
DESCRIPTION	COORDINATE	
	NORTHING	EASTING
POT STA 1966+63.14	881449.64	906570.31
PC STA 2022+96.89	883392.73	911858.36
PI STA 2059+53.47	884653.89	915290.58
PT STA 2090+18.51	888204.48	916164.64

GROUND COORDINATES FOR
 PERMANENT SURVEY MARKERS

DESCRIPTION	COORDINATE	
	NORTHING	EASTING
POT STA 1995+00.00	882428.08	909233.10
POT STA 2015+00.00	883117.88	911110.38

CONTROL POINTS

CONTROL POINT	COORDINATE	
	NORTHING	EASTING
23	881449.64	906570.31
605	881728.27	907125.65
604	882255.05	908556.34
603	882707.98	909810.18
602	882829.02	910271.77
90204	882755.24	910303.19
555	883301.86	911589.92
601	883394.86	911862.17
16750	883461.94	912007.47



PERMANENT SURVEY MARKER \odot

FILE NAME =	USER NAME = paul	DESIGNED - JWS	REVISED -	STATE OF ILLINOIS DEPARTMENT OF TRANSPORTATION	HORIZONTAL CONTROL, FAI ROUTE 70			F.A.I. RTE.	SECTION	COUNTY	TOTAL SHEETS	SHEET NO.
SA\projects\600-200-007 Little Wabash\400 Sheets\07989-01-18.dwg		DRAWN - PDB	REVISED -					70	(25-3)B	EFFINGHAM	1416	18
		CHECKED - BRM	REVISED -		SCALE: 1"=100'			SHEET NO. 1 OF 2 SHEETS		STA. 1966+63.14 TO STA. 2025+00.00		
		DATE - 3-20-09	REVISED -		CONTRACT NO. 74296							
				FED. ROAD DIST. NO. ILLINOIS FED. AID PROJECT								