

STATE OF ILLINOIS  
DEPARTMENT OF TRANSPORTATION  
DIVISION OF HIGHWAYS

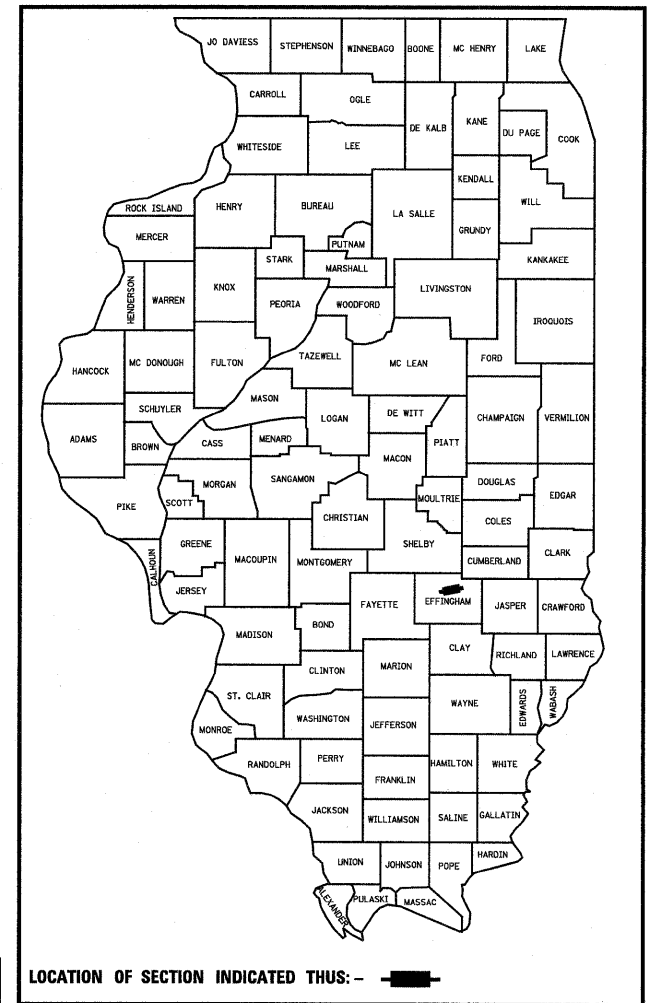
# PLANS FOR PROPOSED HIGHWAY IMPROVEMENT

FOR INDEX OF SHEETS, SEE SHEET NO. 126

FAI ROUTE 57/70  
SECTION (25-3)R,BY  
EFFINGHAM COUNTY

SOUTH TRI LEVEL INTERCHANGE RECONSTRUCTION  
AND CULVERT TUNNEL EXTENSIONS

F.A.I. RTE.	SECTION	COUNTY	TOTAL SHEETS	SHEET NO.
57/70	(25-3)R,BY	EFFINGHAM	1416	125
FED. ROAD DIST. NO.	ILLINOIS	CONTRACT NO. 74296		

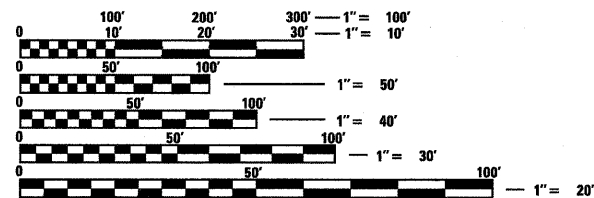


SECTION (25-3)BY INCLUDES EXTENSION OF THE REINFORCED CONCRETE BOX CULVERTS FOR THE STRUCTURES CARRYING EASTBOUND AND WESTBOUND FAI ROUTES 57/70 OVER FRONTAGE ROAD 1354 STA 2076+03.28 EB I-57/70 (ROADWAY B) AND STA 2073+18.78 WB I-57/70 (ROADWAY A) SN 025-2018 EB SN 025-2017 WB

SECTION (25-3)R ENDS STA 2103+44.00

SECTION (25-3)R BEGINS STA 2015+00.00

STATION EQUATION  
BK STA 2093+00.73 ROADWAY B=  
AH STA 2090+18.51 I57/70

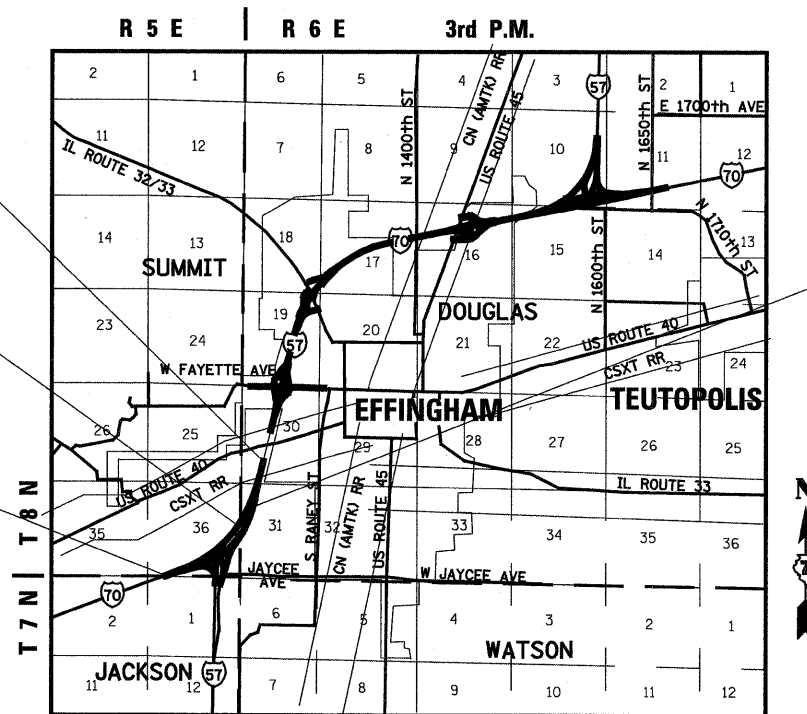


FULL SIZE PLANS HAVE BEEN PREPARED USING STANDARD ENGINEERING SCALES. REDUCED SIZED PLANS WILL NOT CONFORM TO STANDARD SCALES. IN MAKING MEASUREMENTS ON REDUCED PLANS, THE ABOVE SCALES MAY BE USED.

J.U.L.I.E.  
JOINT UTILITY LOCATION INFORMATION FOR EXCAVATION  
1-800-892-0123  
OR 811

PROJECT ENGINEER: TOM RONAN (217)342-8320

CONTRACT NO. 74296



LOCATION MAP

JACKSON, SUMMIT AND DOUGLAS TOWNSHIP



### DESIGN DESIGNATION

7070 (30) PRINCIPAL ARTERIAL INTERSTATE 130.64 (CRCP-20)

- ADT 45,400 (2010) FAI 57/70  
45% TRUCKS
- ADT 18,800 (2010) FAI 57  
44% TRUCKS
- ADT 27,000 (2010) FAI 70  
46% TRUCKS

GROSS SECTION LENGTH = 9,126.22 FEET = 1.728 MILES  
NET SECTION LENGTH = 9,126.22 FEET = 1.728 MILES

SET 2 OF 3



BERNARDIN \* LOCHMUELLER & ASSOCIATES, INC.  
3 OAK DRIVE  
MARYVILLE, ILLINOIS 62062  
PHONE (618) 288-4665  
FAX (618) 288-4666

**PRINTED BY THE AUTHORITY  
OF THE STATE OF ILLINOIS**