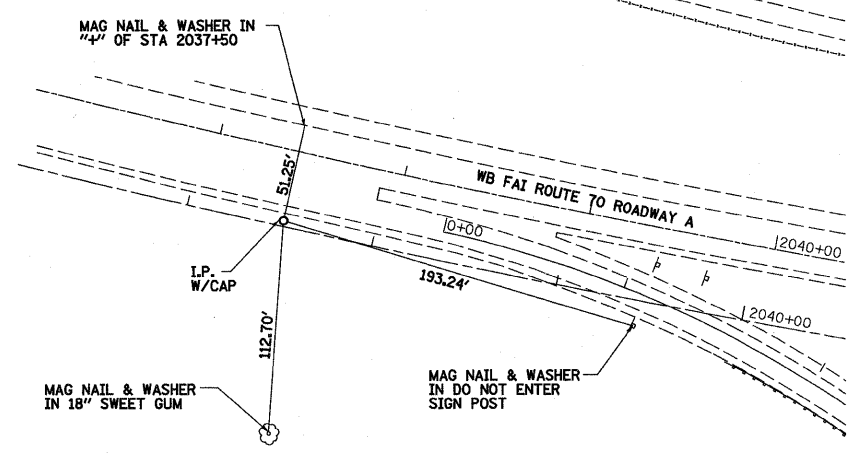
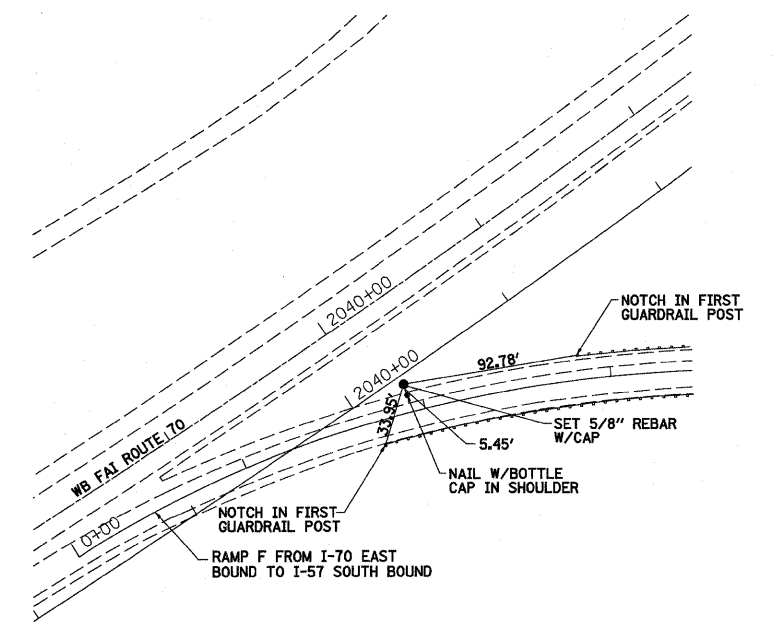


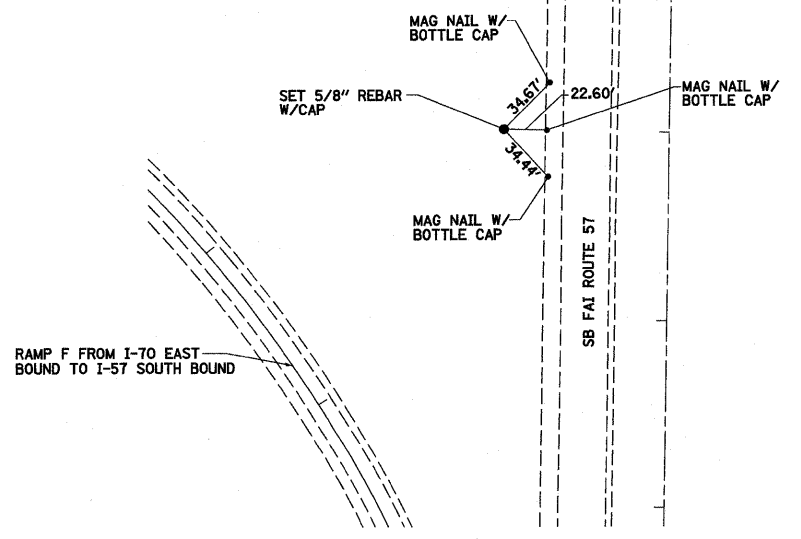
TRAVERSE/P.O.T. NUMBER 6001



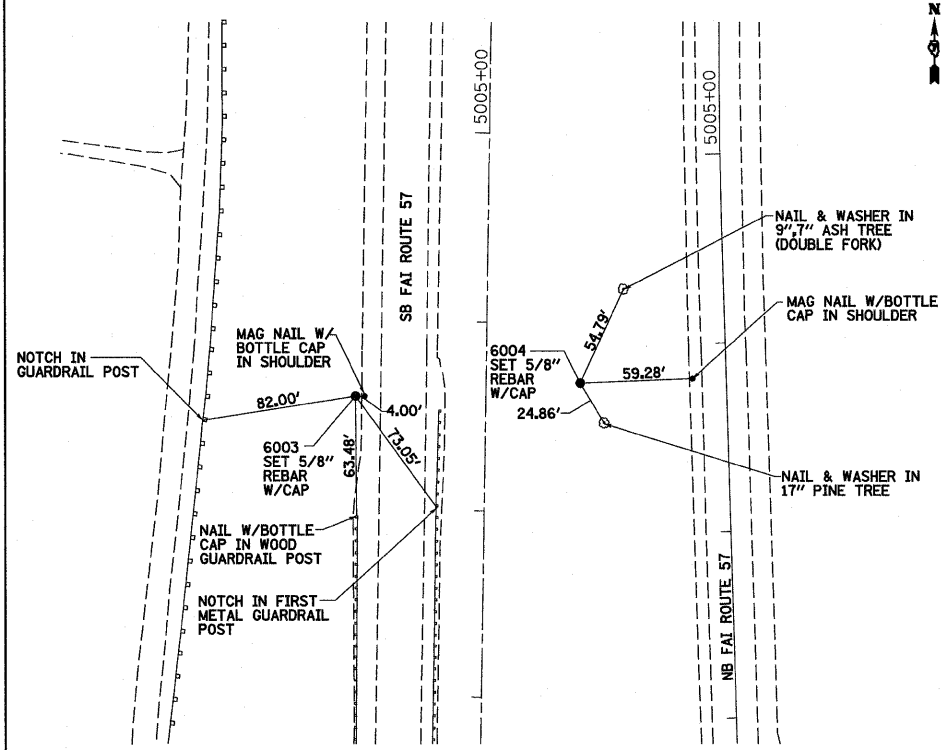
TRAVERSE/P.O.T. NUMBER 600



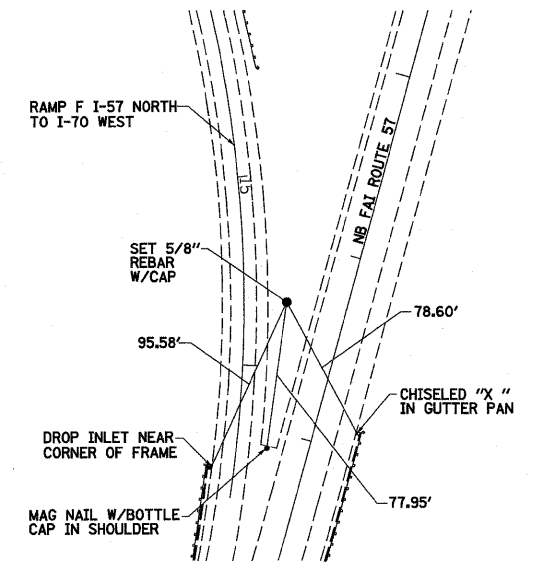
TRAVERSE/P.O.T. NUMBER 6006



TRAVERSE/P.O.T. NUMBER 6002



TRAVERSE/P.O.T. NUMBER 6003 & 6004



TRAVERSE/P.O.T. NUMBER 6005

FILE NAME =
S:\projects\185-6002\57-70\figs\1-1\Net.ctb

USER NAME =
DESIGNED - JWS
DRAWN - PDB
CHECKED - BRM
PLOT SCALE =
PLOT DATE =
DATE - 1-21-09

REVISED -
REVISED -
REVISED -
REVISED -

STATE OF ILLINOIS
DEPARTMENT OF TRANSPORTATION

TIE POINTS, FAI ROUTES 57/70

SCALE: 1"=100' SHEET NO. 8 OF 10 SHEETS STA. TO STA.

F.A.I. RTE.	SECTION	COUNTY	TOTAL SHEETS	SHEET NO.
57/70	(25-3)R	EFFINGHAM	1416	168
FED. ROAD DIST. NO.			ILLINOIS FED. AID PROJECT	

CONTRACT NO. 74296