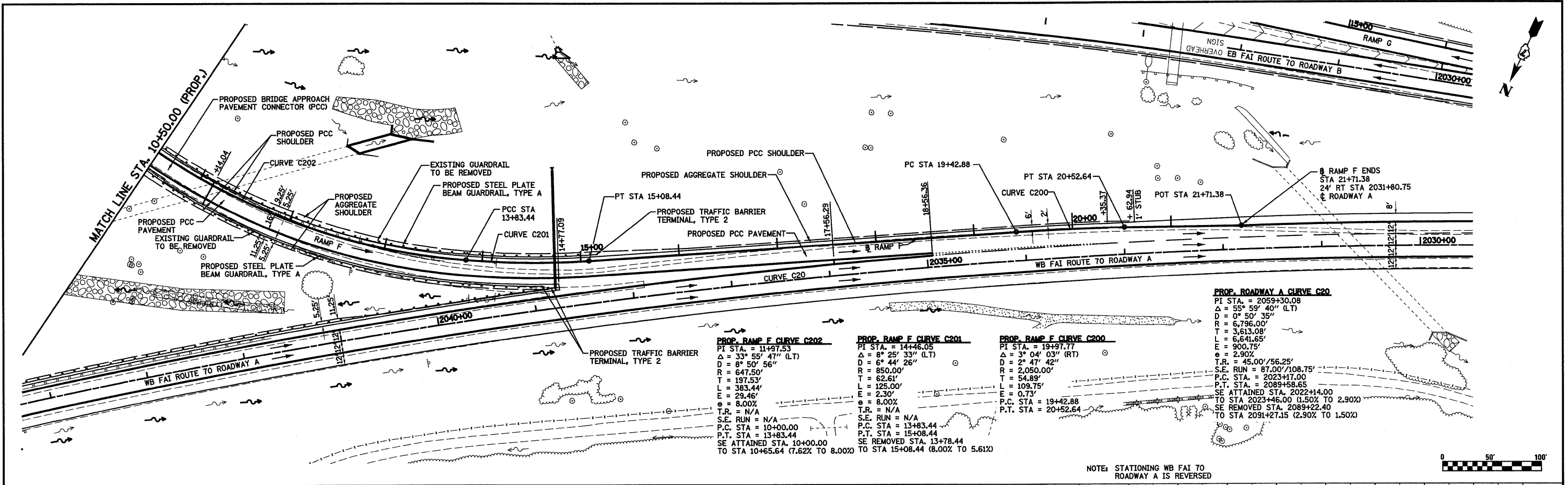


DATE	
BY	
REVISIONS	
NO.	
DATE	
BY	
REVISIONS	
NO.	
DATE	
BY	
REVISIONS	
NO.	
DATE	
BY	
REVISIONS	
NO.	
DATE	
BY	
REVISIONS	
NO.	

DATE	
BY	
REVISIONS	
NO.	
DATE	
BY	
REVISIONS	
NO.	
DATE	
BY	
REVISIONS	
NO.	
DATE	
BY	
REVISIONS	
NO.	



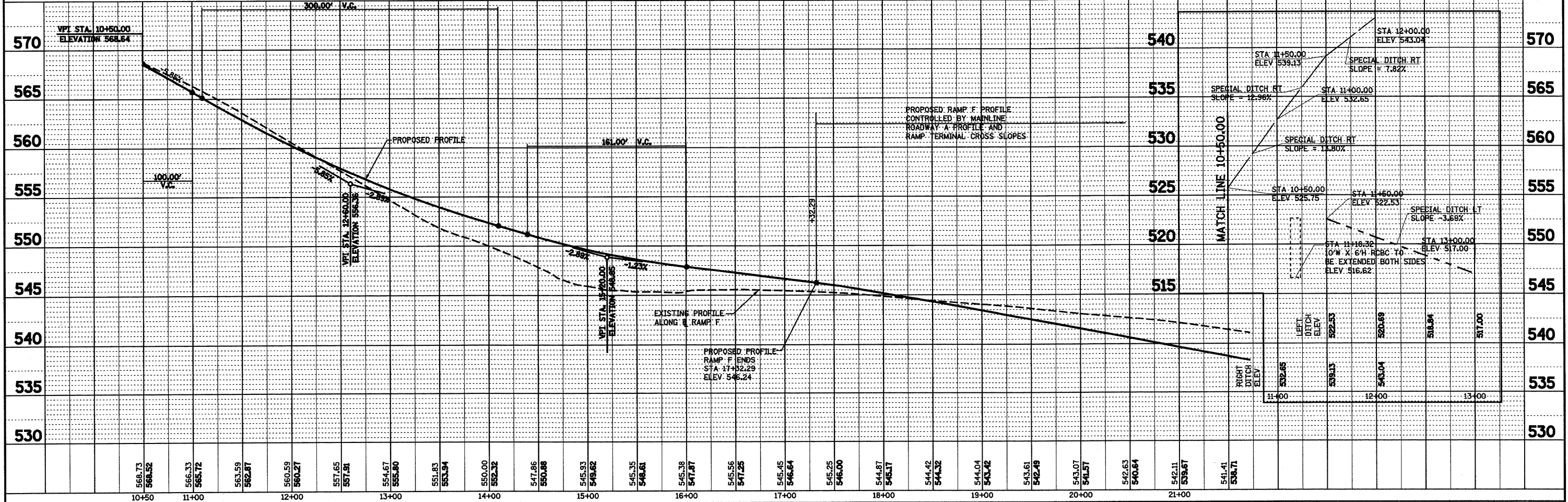
PROP. RAMP F CURVE C202
 P.I. STA. = 11+97.53
 $\Delta = 33^\circ 55' 47''$ (LT)
 $D = 8^\circ 50' 56''$
 $R = 647.50'$
 $T = 197.53'$
 $L = 383.44'$
 $E = 29.46'$
 $\theta = 8.00\%$
 $T.R. = N/A$
 $S.E. RUN = N/A$
 $P.C. STA = 10+00.00$
 $P.T. STA = 13+83.44$
 $SE ATTAINED STA. 10+00.00$
 $TO STA 10+65.64 (7.62\% TO 8.00\%)$

PROP. RAMP F CURVE C201
 P.I. STA. = 14+46.05
 $\Delta = 8^\circ 25' 33''$ (LT)
 $D = 6^\circ 44' 26''$
 $R = 850.00'$
 $T = 62.61'$
 $L = 125.00'$
 $E = 2.30'$
 $\theta = 8.00\%$
 $T.R. = N/A$
 $S.E. RUN = N/A$
 $P.C. STA = 13+83.44$
 $P.T. STA = 15+08.44$
 $SE REMOVED STA. 13+78.44$
 $TO STA 15+08.44 (8.00\% TO 5.61\%)$

PROP. RAMP F CURVE C200
 P.I. STA. = 19+97.77
 $\Delta = 3^\circ 04' 03''$ (RT)
 $D = 2^\circ 47' 42''$
 $R = 2,050.00'$
 $T = 54.89'$
 $L = 109.75'$
 $E = 0.73'$
 $\theta = 2.90\%$
 $P.C. STA = 19+42.88$
 $P.T. STA = 20+52.64$

PROP. ROADWAY A CURVE C20
 P.I. STA. = 2059+30.08
 $\Delta = 55^\circ 59' 40''$ (LT)
 $D = 0^\circ 50' 35''$
 $R = 6,795.00'$
 $T = 3,613.08'$
 $L = 6,641.65'$
 $E = 900.75'$
 $\theta = 2.90\%$
 $T.R. = 45.00'/56.25'$
 $S.E. RUN = 87.00'/108.75'$
 $P.C. STA. = 2023+17.00$
 $P.T. STA. = 2089+58.65$
 $SE ATTAINED STA. 2022+14.00$
 $TO STA 2023+46.00 (1.50\% TO 2.90\%)$
 $SE REMOVED STA. 2089+22.40$
 $TO STA 2091+27.15 (2.90\% TO 1.50\%)$

NOTE: STATIONING WB FAI TO ROADWAY A IS REVERSED



FILE NAME =	USER NAME = paul	DESIGNED - JWS	REVISED -	STATE OF ILLINOIS DEPARTMENT OF TRANSPORTATION	PLAN AND PROFILE, SOUTH TRI LEVEL - RAMP F	F.A.I. RTE.	SECTION	COUNTY	TOTAL SHEETS	SHEET NO.
9/19/2010 10:22:29 AM 10/17/10 5th Rev 1.dwg	DRAWN - PDB	REVISED -	57/70			(25-3)R	EFFINGHAM	1416	192	
PLOT SCALE = 1/8"=20'-0" / IN.	CHECKED - BRM	REVISED -	CONTRACT NO. 74296							
PLOT DATE = 2/11/2010	DATE = 2-25-08	REVISED -	FED. ROAD DIST. NO. ILLINOIS FED. AID PROJECT							