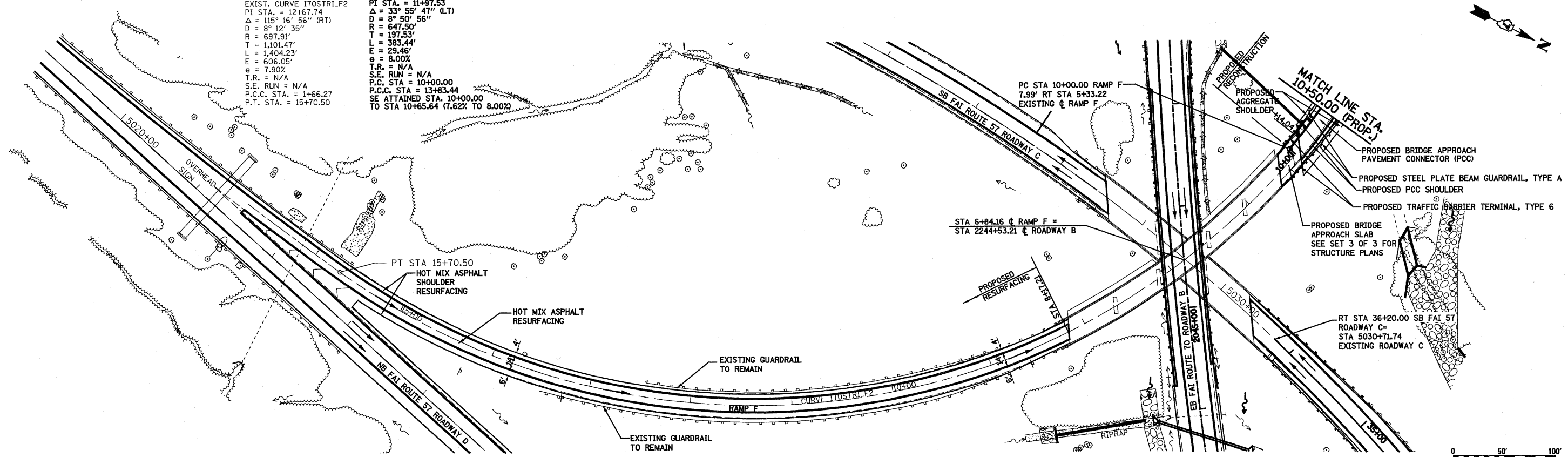


DATE	
BY	
PLANNED	
ALIGNED	
CHECKED	
RT. OF WAY	
CHECKED	
NO. OF WAY	
CHECKED	
NO.	

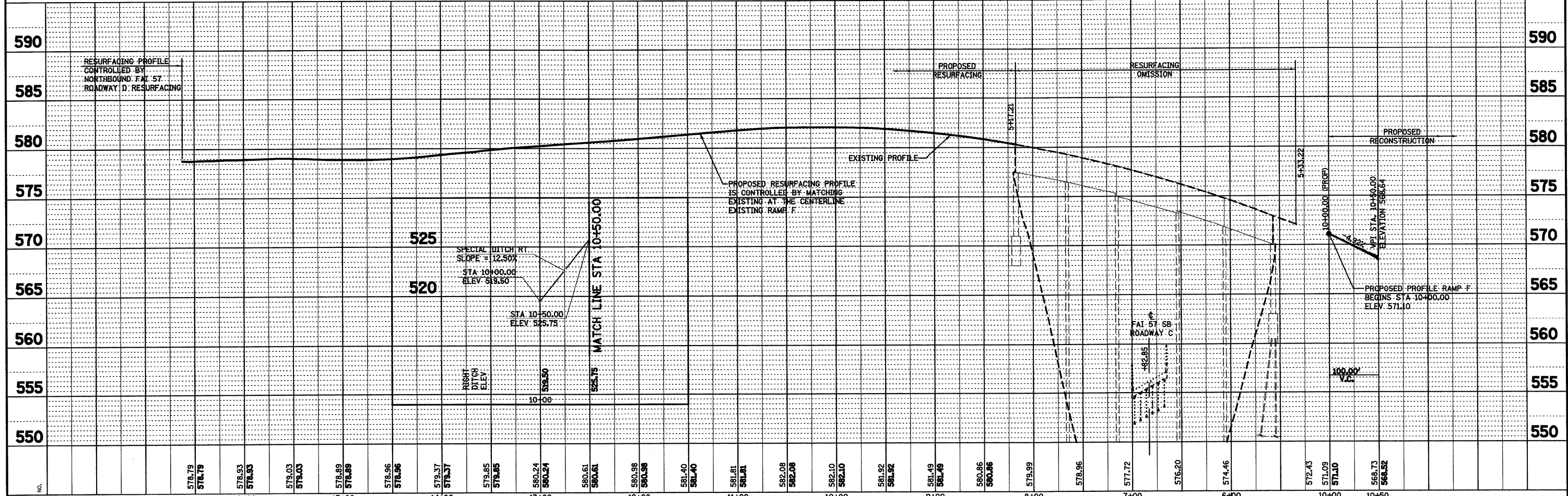
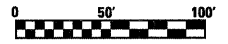
DATE	
BY	
PROFILING	
PLOTTED	
CHECKED	
NO. OF WAY	
CHECKED	
NO.	

EXIST. RAMP F
 EXIST. CURVE 170STR1.F2
 PI STA. = 12+67.74
 $\Delta = 115^\circ 16' 56''$ (RT)
 D = 8° 12' 35"
 R = 697.91'
 T = 1,101.47'
 L = 1,404.23'
 E = 606.05'
 e = 7.90%
 T.R. = N/A
 S.E. RUN = N/A
 P.C.C. STA. = 1+66.27
 P.T. STA. = 15+70.50

PROP. RAMP F CURVE C202
 PI STA. = 11+97.53
 $\Delta = 33^\circ 55' 47''$ (LT)
 D = 8° 50' 56"
 R = 647.50'
 T = 197.53'
 L = 383.44'
 E = 29.46'
 e = 8.00%
 T.R. = N/A
 S.E. RUN = N/A
 P.C. STA. = 10+00.00
 P.C.C. STA. = 13+83.44
 SE ATTAINED STA. 10+00.00
 TO STA 10+65.64 (7.62% TO 8.00%)



NOTE: STATIONING EXISTING
 & RAMP F IS REVERSED



FILE NAME =	USER NAME = paul	DESIGNED - JWS	REVISED -	STATE OF ILLINOIS DEPARTMENT OF TRANSPORTATION	PLAN AND PROFILE, SOUTH TRI LEVEL - RAMP F	F.A.I. RTE. 57/70	SECTION (25-3)R	COUNTY EFFINGHAM	TOTAL SHEETS 1416	SHEET NO. 193		
PROJECT: 03 0007257-70dps TrdVp.Sln Ramp F.dgn	PLOT SCALE = 1/8" = 100' / IN.	DRAWN - PDB	REVISED -			SCALE: 1"=50'		SHEET NO. 22 OF 27 SHEETS		STA. 15+70.50 (E) TO STA. 10+50.00 (P)		CONTRACT NO. 74296
	PLOT DATE = 3/19/2010	CHECKED - BRM	REVISED -			FED. ROAD DIST. NO.		ILLINOIS FED. AID PROJECT				
		DATE - 0-25-08	REVISED -									