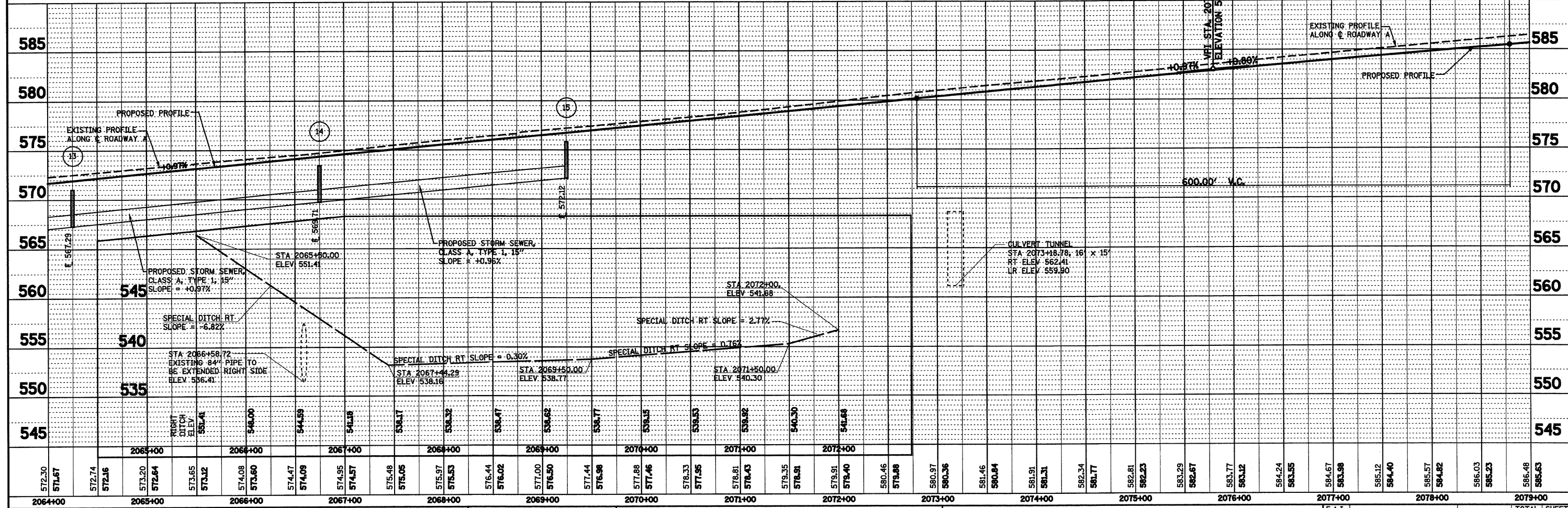
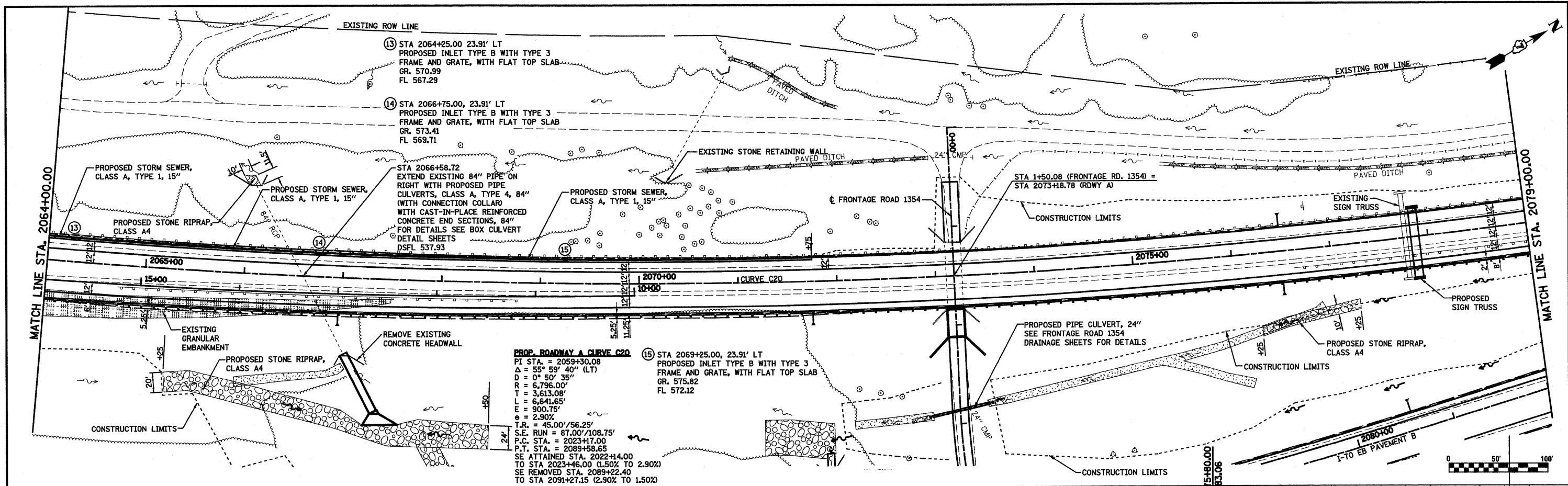


DATE	
BY	
REVIEWED	
PLANNED	
ALIGNED	
CHECKED	
NOTE BOOK	
NO.	
DATE	
BY	
REVIEWED	
PLANNED	
ALIGNED	
CHECKED	
NOTE BOOK	
NO.	

DATE	
BY	
REVIEWED	
PLANNED	
ALIGNED	
CHECKED	
NOTE BOOK	
NO.	
DATE	
BY	
REVIEWED	
PLANNED	
ALIGNED	
CHECKED	
NOTE BOOK	
NO.	



FILE NAME =	USER NAME = paul	DESIGNED - JWS	REVISED -	STATE OF ILLINOIS DEPARTMENT OF TRANSPORTATION	DRAINAGE PLAN AND PROFILE, SOUTH TRI LEVEL ROADWAY A	F.A.I. R.T.E. 57/70 SECTION (25-3)R COUNTY EFFINGHAM TOTAL SHEETS 1416 SHEET NO. 272
PROJECT NO. 00072.57-70(13) Tri-Level Rd. S. Tri Level Roadway A	PLOT SCALE = 1/8" = 100.00' / IN.	DRAWN - PDB	REVISED -			
	PLOT DATE = 2/11/2010	CHECKED - BRM	REVISED -			
		DATE - 2-25-08	REVISED -			
SCALE: 1"=50'		SHEET NO. 13 OF 27 SHEETS		STA. 2064+00.00 TO STA. 2079+00.00		CONTRACT NO. 74296