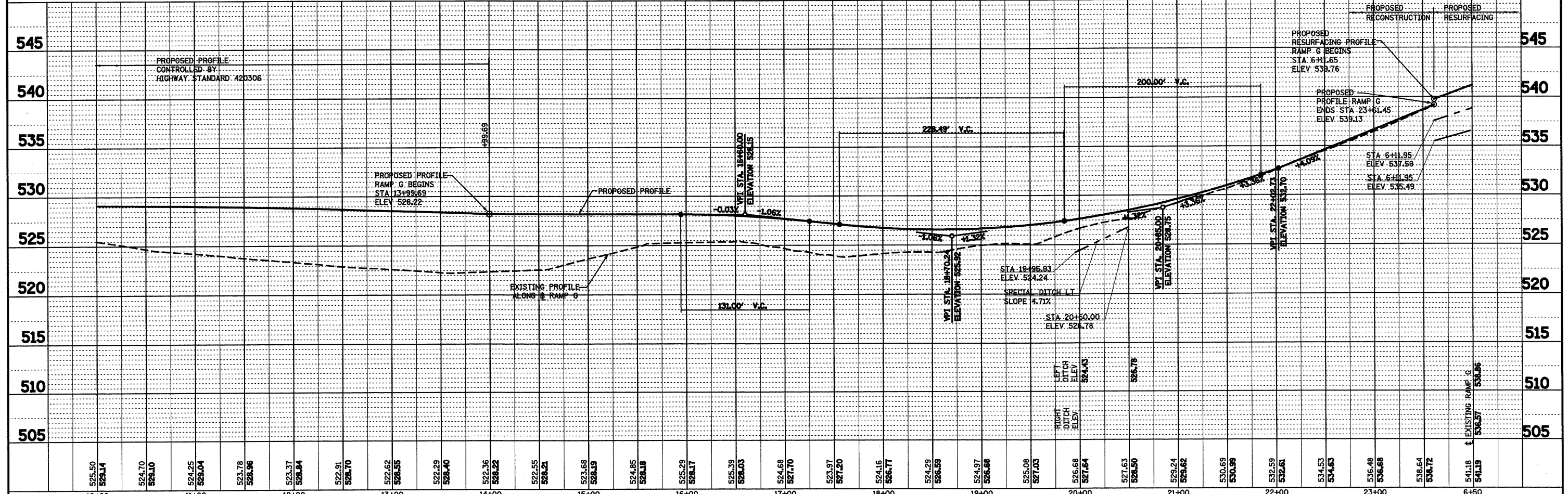
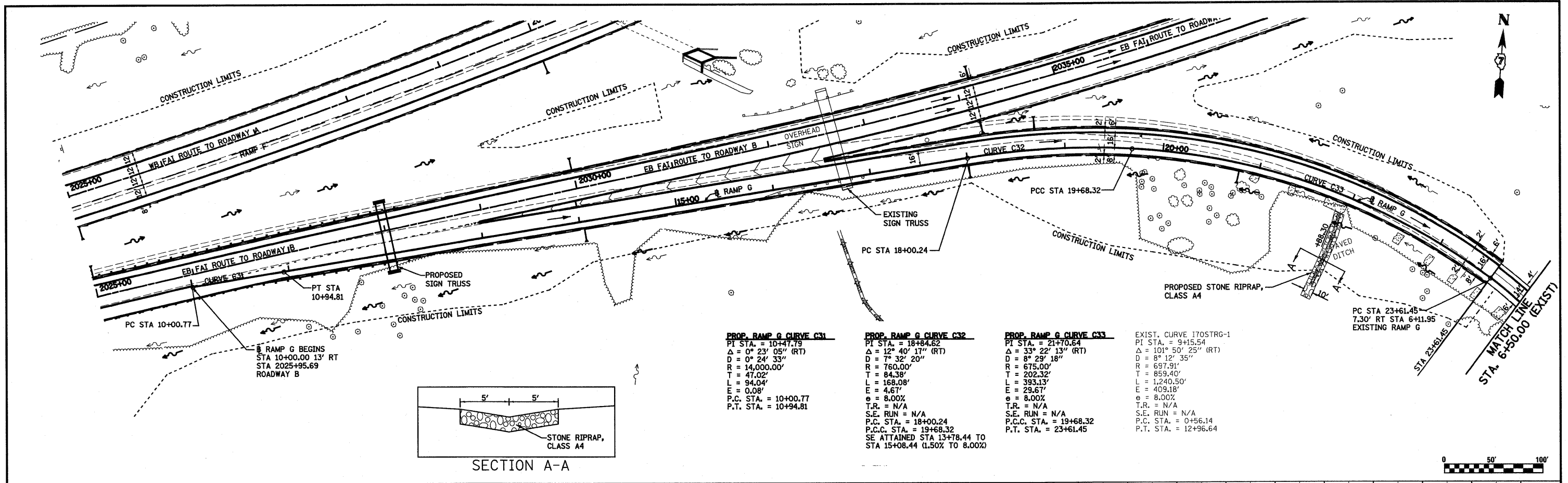


DATE	
BY	
SUBMITTED	
ALIGNED	
NOTED	
NO.	
NO.	
NO.	
NO.	

DATE	
BY	
REVIEWED	
GRADES	
NOTED	
NO.	
NO.	
NO.	
NO.	



FILE NAME =	USER NAME = paul	DESIGNED - JWS	REVISED -	STATE OF ILLINOIS DEPARTMENT OF TRANSPORTATION	DRAINAGE PLAN AND PROFILE, SOUTH TRI LEVEL - RAMP G	F.A.I. RTE. 57/70	SECTION (25-3)R	COUNTY EFFINGHAM	TOTAL SHEETS 1416	SHEET NO. 282	
PLOT SCALE = 1/8" = 100'	CHECKED - BRM	REVISED -	SCALE: 1"=50'			SHEET NO. 23 OF 27 SHEETS	STA. 10+00.00 (P) TO STA. 6+50.00 (E)	FED. ROAD DIST. NO.	ILLINOIS FED. AID PROJECT	CONTRACT NO. 74296	
PLOT DATE = 2/11/2010	DATE - 2-25-08	REVISED -									