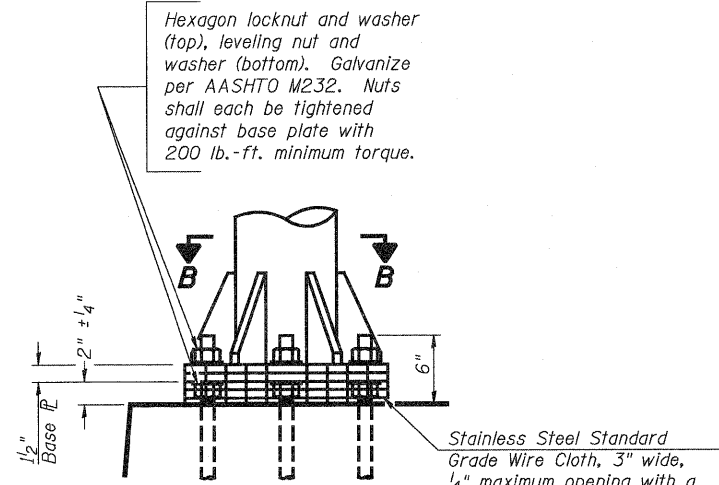
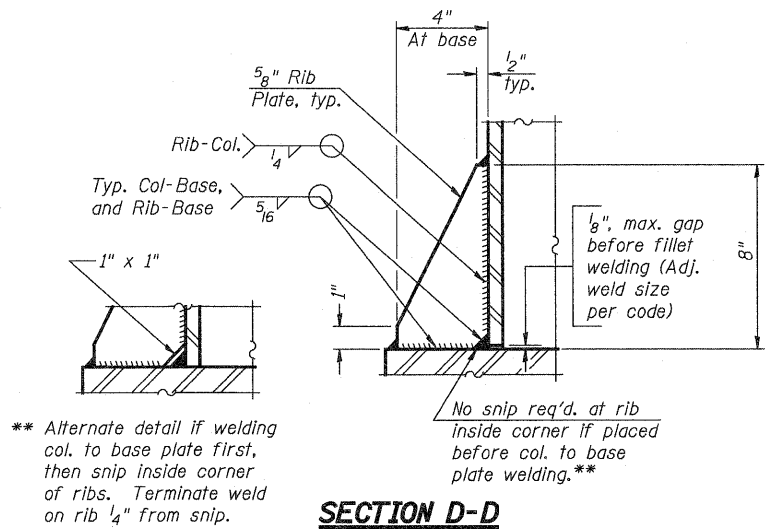


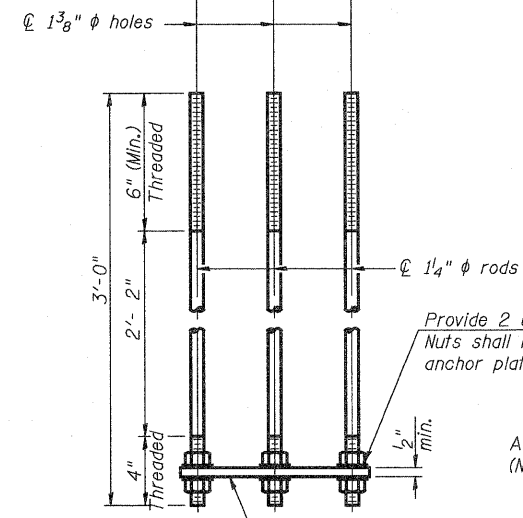
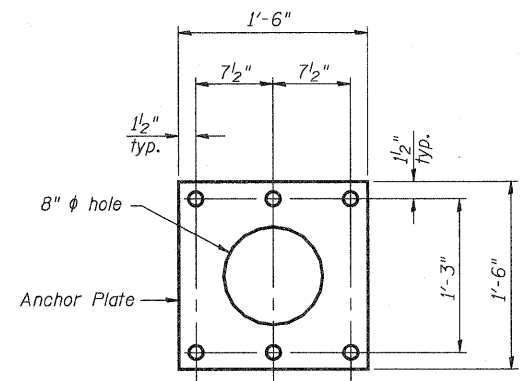
STATE OF ILLINOIS  
DEPARTMENT OF TRANSPORTATION



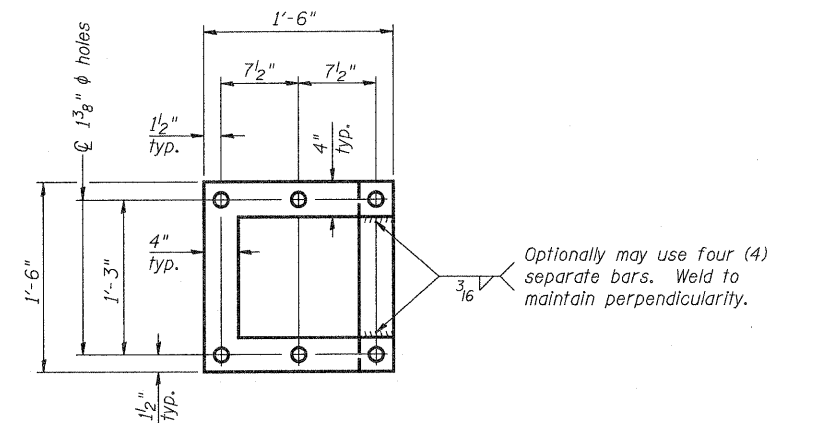
**DETAIL B**



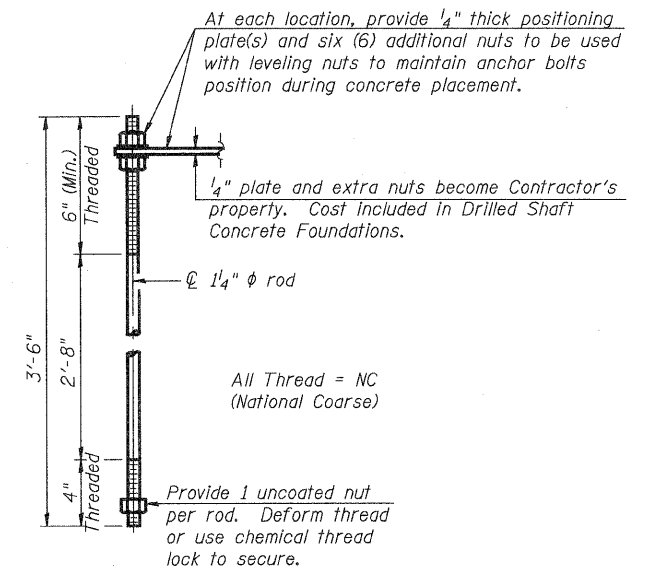
**SECTION D-D**



**ANCHOR ROD DETAIL**  
Spread Footing Foundation



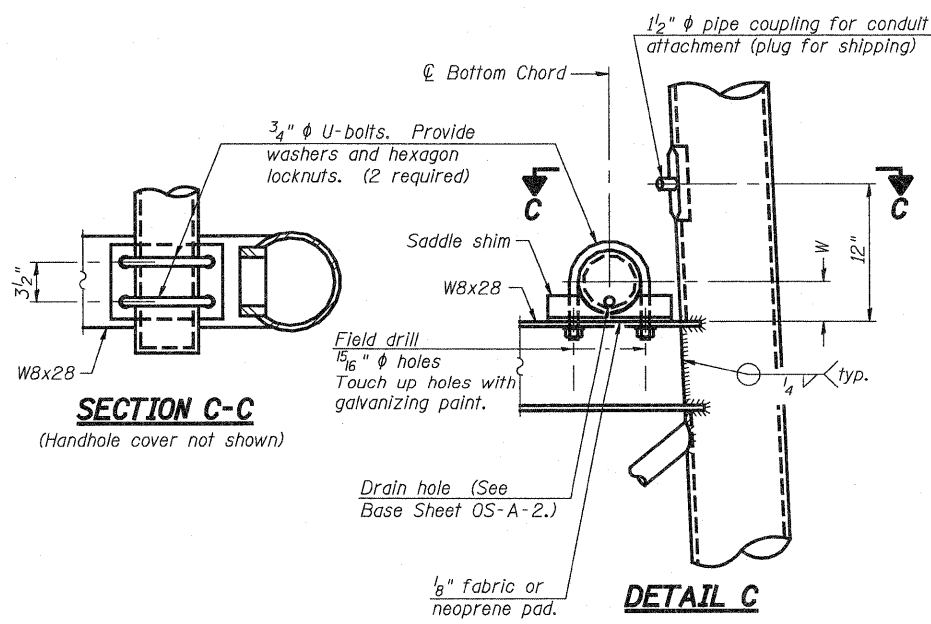
**POSITIONING PLATE(S)**



**ANCHOR ROD DETAIL**  
Drilled Shaft Foundation

Anchor rods shall conform to AASHTO M314 Grade 36 or 50 and meet Charpy V-Notch (CVN) energy of 15 lb.-ft. at 40° F. Galvanize upper 12" per AASHTO M232. No welding shall be permitted on rods.

**10"  $\phi$  PIPE SUPPORT FRAME DETAILS**



**SECTION C-C**

**DETAIL C**

NUMBER	REVISION	DATE

DESIGNED	ESW
CHECKED	JWS
DRAWN	PDB
CHECKED	BRM

OS-A-6A 12-1-08

**OVERHEAD SIGN STRUCTURES  
SUPPORT FRAME DETAILS ALUMINUM TRUSS**

SHEET NO. 19	F.A.I. RTE.	SECTION	COUNTY	TOTAL SHEETS	SHEET NO.
	57/70	(25-3)R	EFFINGHAM	1416	371
SHEETS 33	CONTRACT NO. 74296				
	FED. ROAD DIST. NO.	ILLINOIS FED. AID PROJECT			