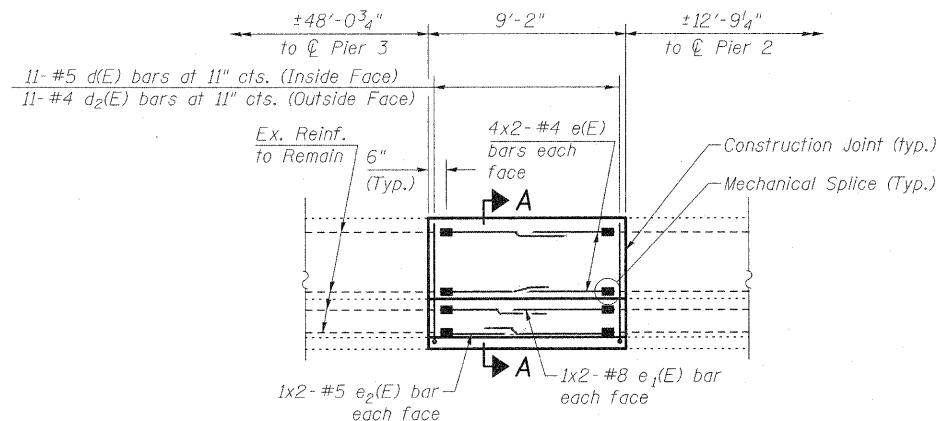


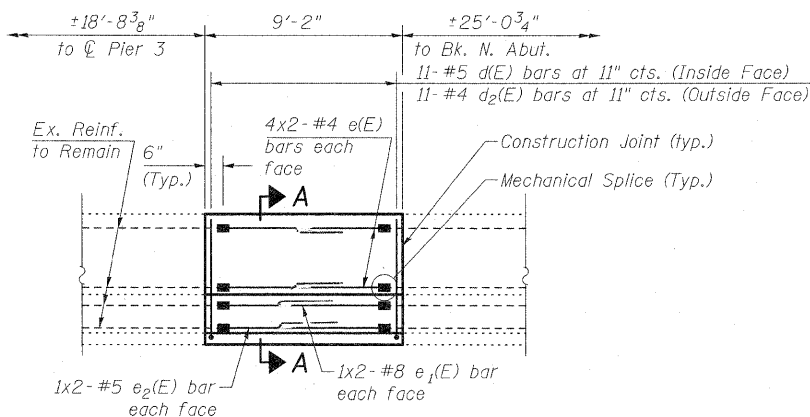
STATE OF ILLINOIS  
DEPARTMENT OF TRANSPORTATION

Note: See Sheet 3 of 4 for Section A-A.



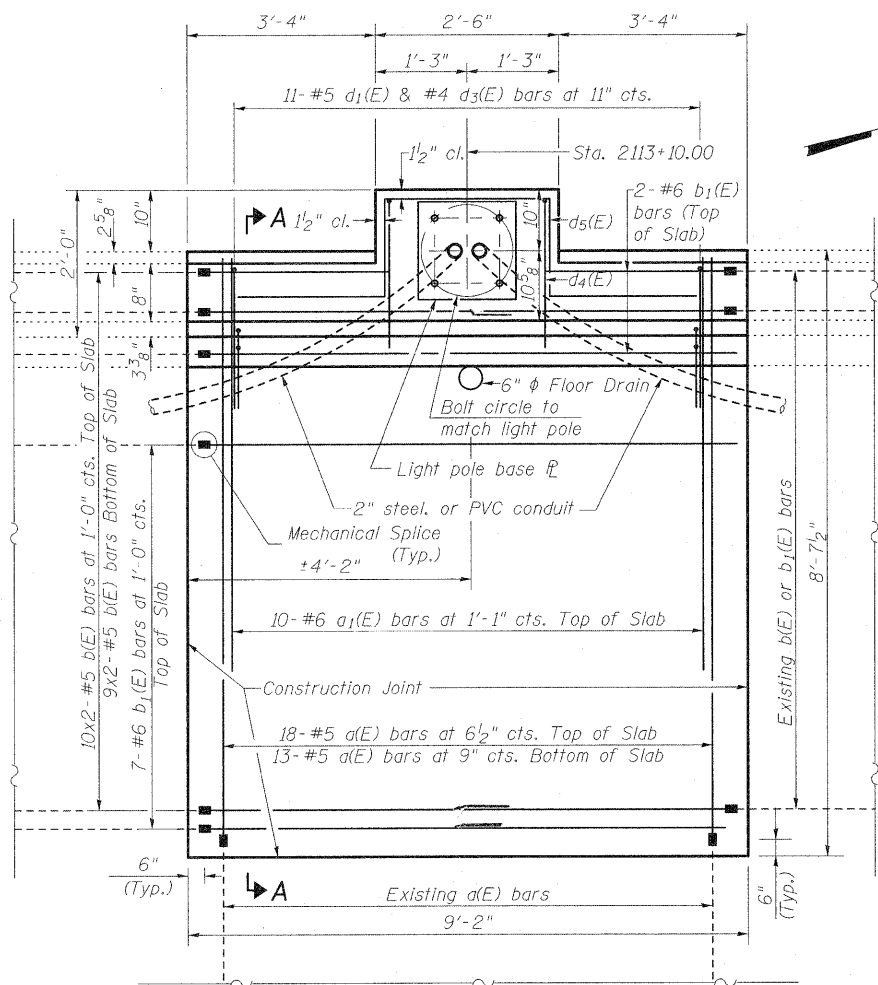
**EAST PARAPET ELEVATION**

Dimensions are along the length of the parapet.

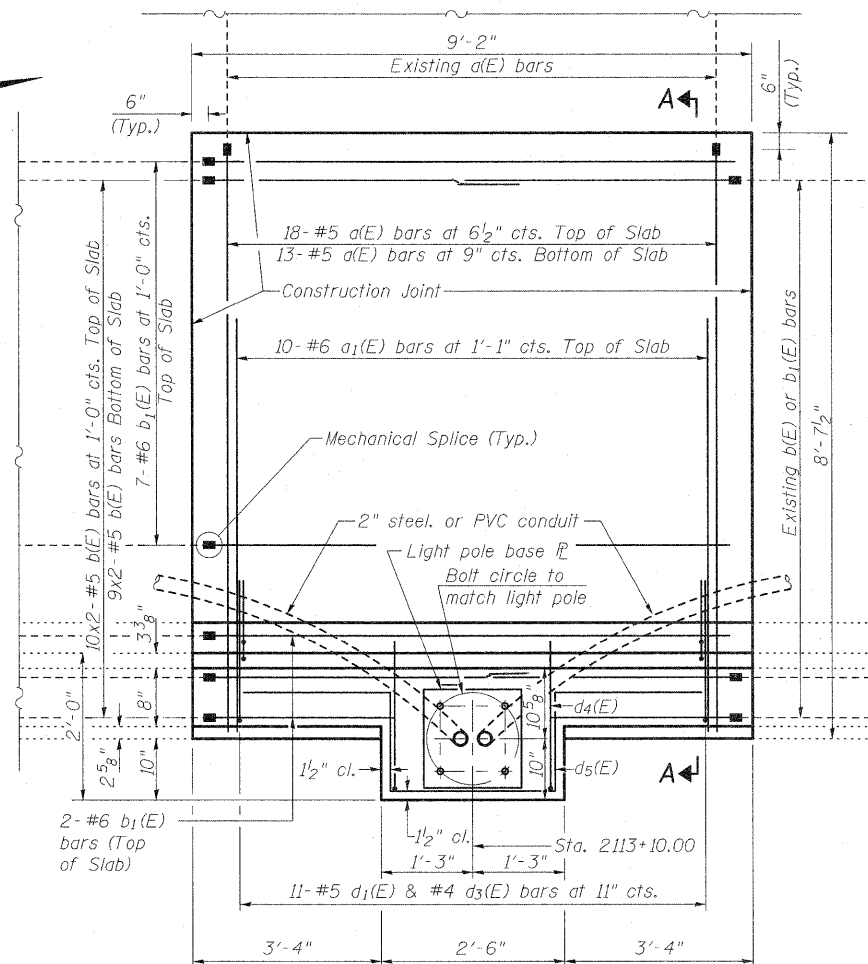


**WEST PARAPET ELEVATION**

Dimensions are along the length of the parapet.



**DETAIL A**



**DETAIL B**

**GENERAL NOTES**

Reinforcement bars shall conform to the requirements of ASTM A 706 Gr 60. See Special Provisions.

Reinforcement bars designated (E) shall be epoxy coated.

Prior to pouring the new concrete deck, all heavy or loose rust, loose mill scale, and other loose or potentially detrimental foreign material shall be removed from the surfaces in contact with concrete. Tightly adhered paint may remain unless otherwise noted. Removal shall be accomplished by methods that will not damage the steel and the cost will be included in the pay item covering removal of the existing concrete.

Plan dimensions and details relative to existing plans are subject to nominal construction variations. The Contractor shall field verify existing dimensions and details affecting new construction and make necessary approved adjustments prior to construction or ordering of materials. Such variations shall not be cause for additional compensation for a change in scope of the work, however, the Contractor will be paid for the quantity actually furnished at the unit price bid for the work.

Existing reinforcement bars extending into the removal area shall be cleaned, straightened and incorporated into the new construction. Any reinforcement bars that are damaged during concrete removal shall be replaced with an approved bar splicer or anchorage system. Cost included with Concrete Removal.

All structural steel shall be shop painted with the inorganic zinc rich primer per AASHTO M300, Type 1. Cost included with Floor Drains.

The SSPC-QP1 and SSPC-QP2 Painting Contractor Certifications will not be required for this bridge.

Floor drain removal included in the cost of Concrete Removal.

The deck surface shall have its final finish tined according to Article 420.09 (e) (1) of the Standard Specifications. Cost included with Concrete Structures.

Bars indicated thus 4 x 2 - #4 etc. indicates 4 lines of bars with 2 bars per line.

**MINIMUM BAR LAP**

- #4 bar = 2'-0"
- #5 bar = 2'-6"
- #6 bar = 3'-0"
- #8 bar = 5'-2"

**PARAPET DETAILS**

S.N. 025-0099 & 025-0100

DESIGNED	B.B.
CHECKED	C.J.F.
DRAWN	W.J.S.
CHECKED	C.J.F. & B.B.

Note:  
Cost of anchor rods and conduit is included with Concrete Superstructure.



**BERNARDIN  
LOCHMUELLER &  
ASSOCIATES, INC.**

3 Oak Drive  
Maryville, IL 62062-5655  
Local (618) 398-4665  
Fax 618-398-4666

SHEET NO. 2	F.A.I. RTE.	SECTION	COUNTY	TOTAL SHEETS	SHEET NO.
	70	(25-3)R, BY	EFFINGHAM	1416	425
4 SHEETS	SN 025-0099 & 025-0100		CONTRACT NO. 74296		
FED. ROAD DIST. NO. 7 ILLINOIS FED. AID PROJECT					