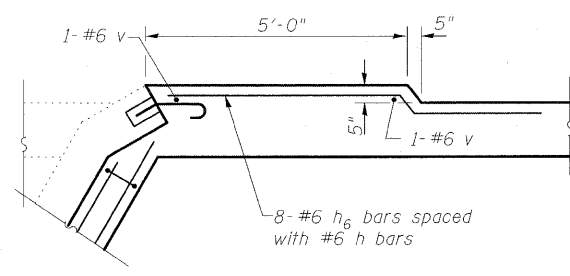
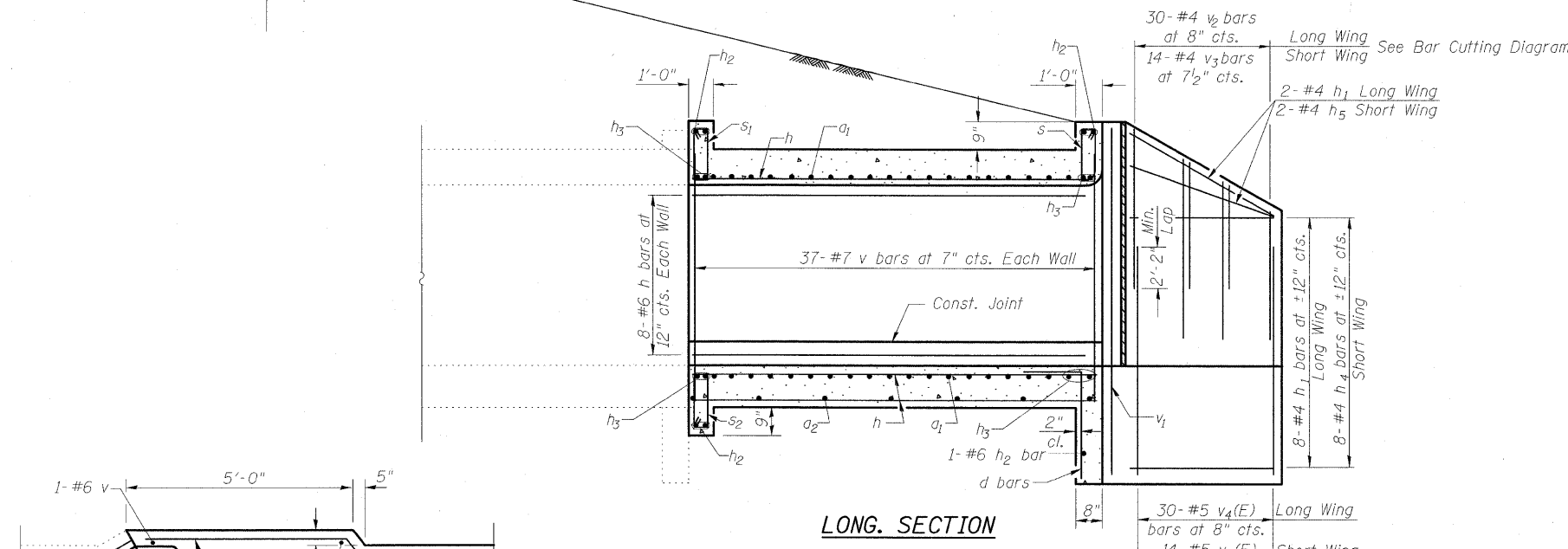
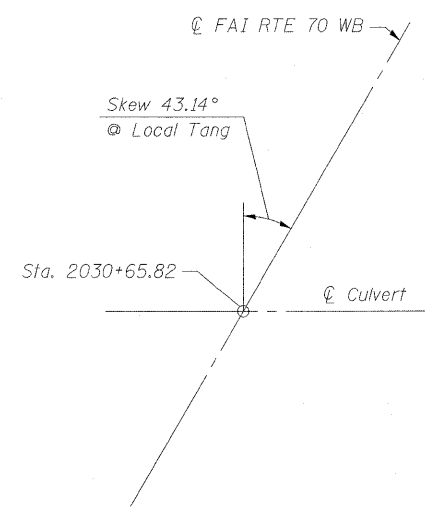


STATE OF ILLINOIS
DEPARTMENT OF TRANSPORTATION

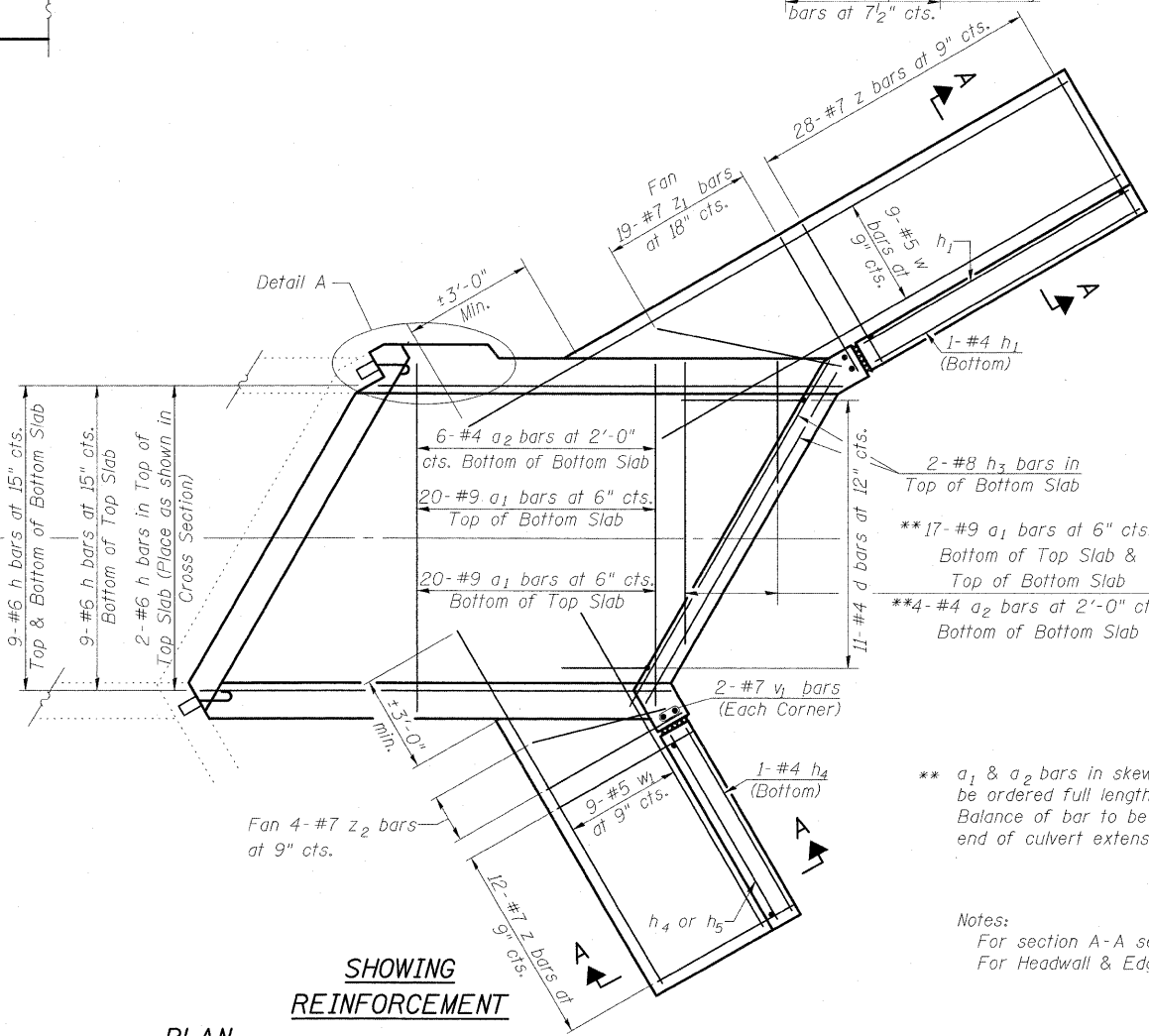
PG Elev. 535.48
FAI RTE TO WB



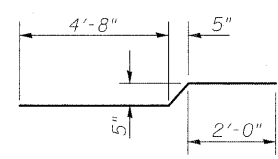
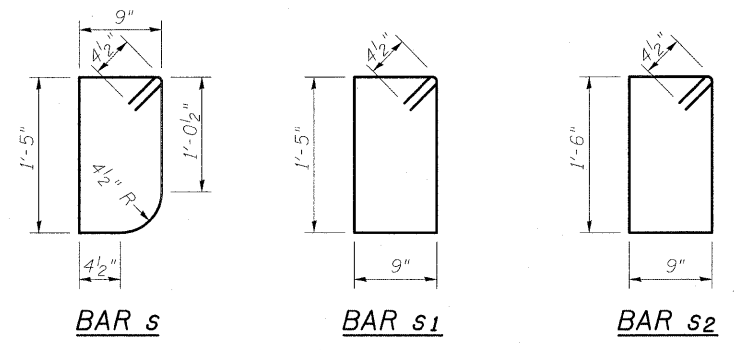
DETAIL A



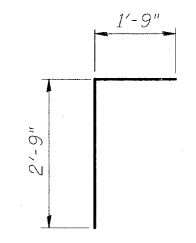
PLAN



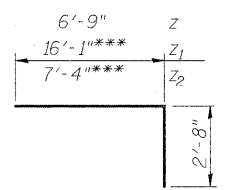
SHOWING REINFORCEMENT



BAR h6

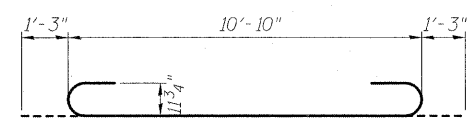


BAR d



BAR z & z1

*** Longest length required - 16'-1" for z1
7'-4" for z2
Field cut remaining bars to fit



BAR a1

BILL OF MATERIAL

Bar	No.	Size	Length	Shape
a1	74	#9	13'-4"	
a2	10	#4	10'-10"	
d	11	#4	4'-6"	
h	45	#6	21'-0"	
h1	11	#4	19'-6"	
h2	3	#6	15'-0"	
h3	10	#8	15'-0"	
h4	9	#4	8'-0"	
h5	2	#4	8'-9"	
h6	8	#6	7'-3"	
s	15	#4	4'-11"	
s1	15	#4	5'-1"	
s2	15	#4	5'-3"	
v	76	#7	8'-8"	
v1	4	#7	11'-4"	
v2	15	#4	12'-3"	
v3	7	#4	12'-3"	
v4(E)	44	#5	6'-0"	
w	9	#5	38'-4"	
w1	9	#5	14'-4"	
z	40	#7	9'-5"	
z1	19	#7	18'-9"	
z2	4	#7	10'-0"	

Concrete Box Culverts	Cu. Yd.	41.3
Reinforcement Bars, Epoxy Coated	Pound	280
Reinforcement Bars	Pound	9490
3/4" Expansion Bolts	Each	26
Concrete Removal	Cu. Yd.	9.5
Removal & Disposal of Unsuitable Material	Cu. Yd.	39
Rockfill-Replacement	Ton	82

Notes:
For section A-A see sheet 1 of 3.
For Headwall & Edge Beam Reinforcement see sheet 1 of 1.

BOX CULVERT DETAILS
RT STA 2030+65.82
FAI ROUTE 70 WB (RDWY A)

DESIGNED	ACS
CHECKED	CJF
DRAWN	RCB
CHECKED	CJF

Revised Sheet 5/21/10 CJF

BERNARDIN
LOCHMUELLER &
ASSOCIATES, INC.

3 Oak Drive
Maryville, IL 62442-5655
Local (618) 398-4665
Fax 618-398-4666

SHEET NO. 2	F.A.I. RTE.	SECTION	COUNTY	TOTAL SHEETS	SHEET NO.
OF 3 SHEETS	57/70	(25-3)R	EFFINGHAM	1416	443
			CONTRACT NO. 74296		
FED. ROAD DIST. NO.		ILLINOIS	FED. AID PROJECT		

1:05:47 PM 5/21/2010 ...\\server1\2030+65.82_sheets\dwg