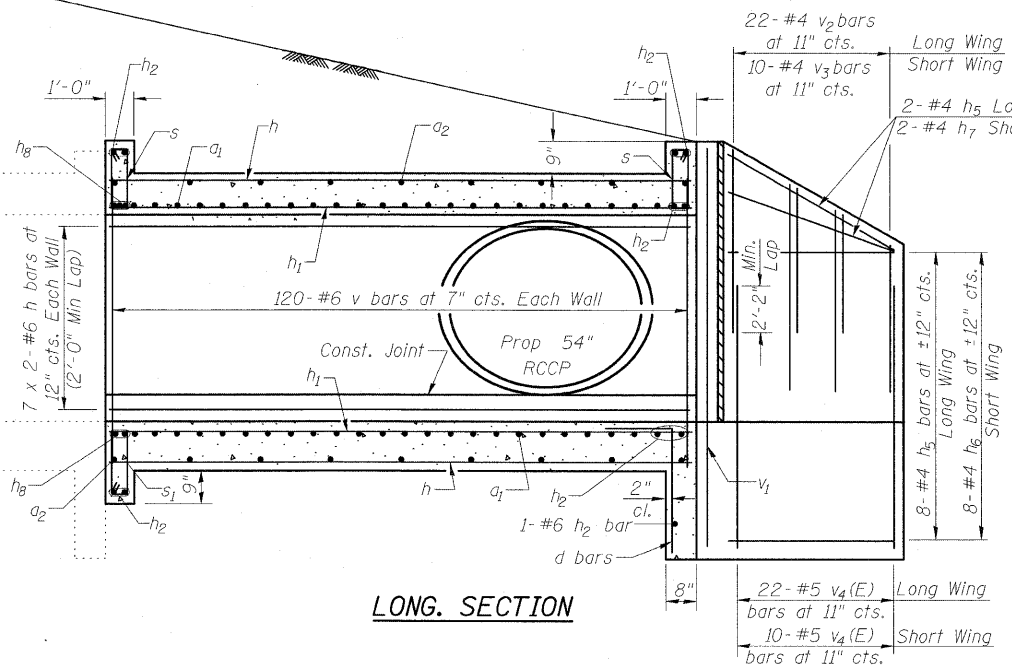
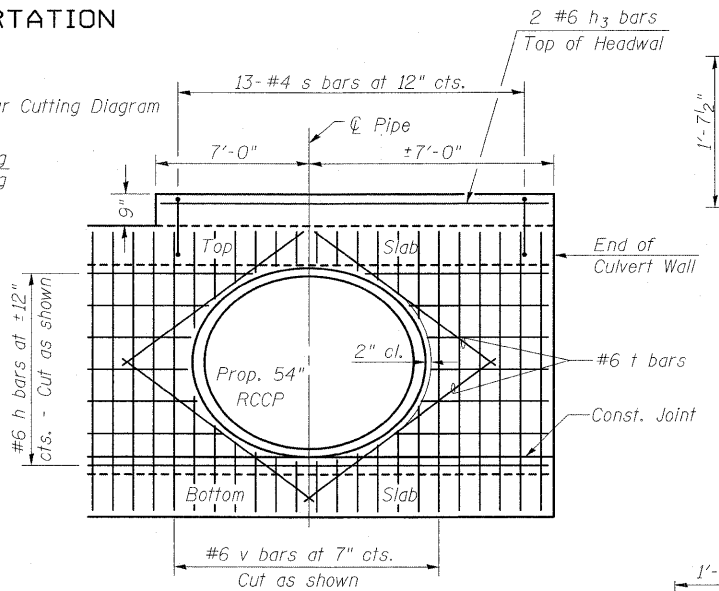


STATE OF ILLINOIS  
DEPARTMENT OF TRANSPORTATION

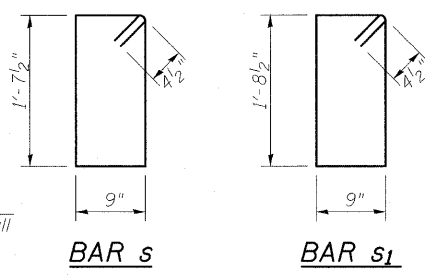
PG Elev. 555.49  
FAI RTE TO WB



LONG. SECTION

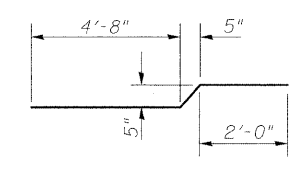


BAR DIAGRAM  
AT PROP. PIPE

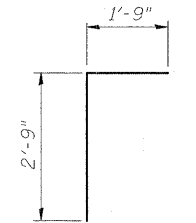


BAR s

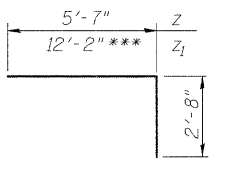
BAR s1



BAR h4

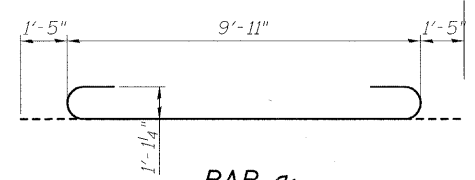


BAR d



BAR z & z1

\*\*\* Longest length required - 14'-10"  
Field cut remaining bars to fit

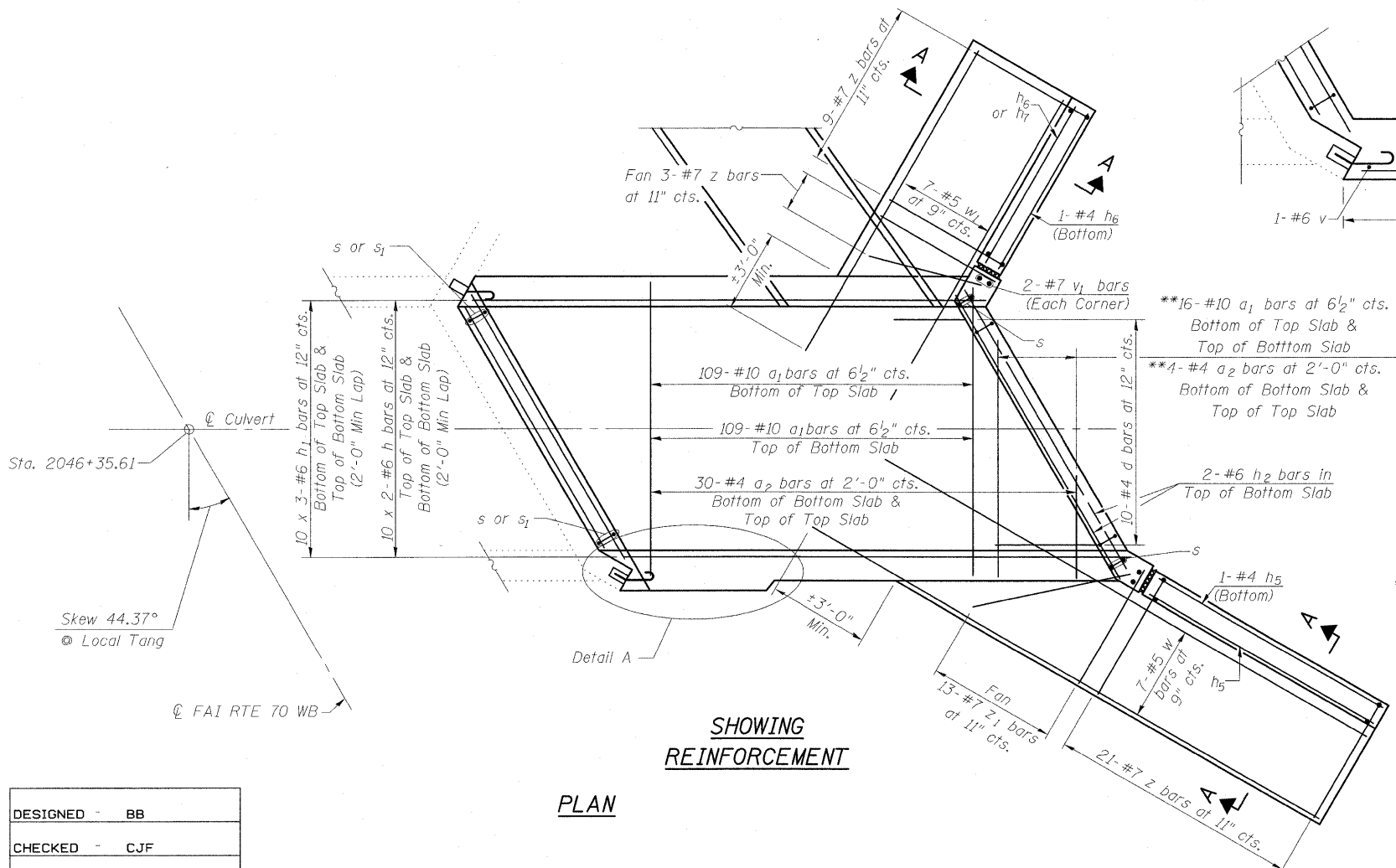


BAR a1

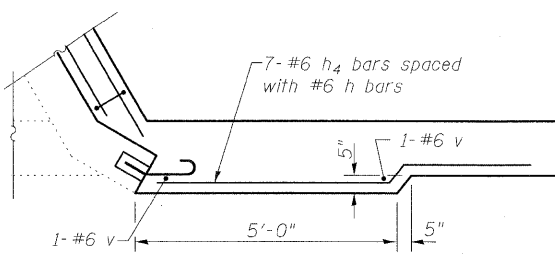
BILL OF MATERIAL

Bar	No.	Size	Length	Shape
a1	250	#10	12'-9"	
a2	68	#4	9'-11"	
d	10	#4	4'-6"	
h	68	#6	35'-10"	
h1	60	#6	24'-7"	
h2	11	#6	13'-9"	
h3	2	#6	13'-9"	
h4	7	#6	7'-3"	
h5	11	#4	17'-8"	
h6	9	#4	7'-2"	
h7	2	#4	7'-10"	
h8	6	#9	13'-9"	
s	39	#4	5'-6"	
s1	13	#4	5'-8"	
t	4	#6	6'-10"	
v	242	#6	8'-0"	
v1	4	#7	10'-6"	
v2	11	#4	11'-0"	
v3	5	#4	10'-11"	
v4(E)	32	#5	6'-0"	
w	7	#5	34'-3"	
w1	7	#5	13'-0"	
z	33	#7	8'-3"	
z1	13	#7	14'-10"	

Material	Unit	Quantity
Concrete Box Culverts	Cu. Yd.	95.5
Reinforcement Bars, Epoxy Coated	Pound	210
Reinforcement Bars	Pound	25530
3/4" Expansion Bolts	Each	22
Concrete Removal	Cu. Yd.	6.9
Removal & Disposal of Unsuitable Material	Cu. Yd.	77
Rockfill-Replacement	Ton	162



PLAN



DETAIL A

\*\* a1 & a2 bars in skew portion of slab shall be ordered full length & cut to fit. Balance of bar to be used in opposite end of culvert extension.

Notes:  
Bars indicated thus 10 x 3-#6 etc. indicates 10 lines of bars with 3 lengths per line.  
For Section A-A, see Sheet 1 of 3.  
For Headwall & Edge Beam Reinforcement see Sheet 1 of 3.

DESIGNED -	BB
CHECKED -	CJF
DRAWN -	RCB
CHECKED -	CJF

Revised Sheet 5/21/10 CJF



BERNARDIN  
LOCHMUELLER &  
ASSOCIATES, INC.

3 Oak Drive  
Maryville, IL 62442-5635  
Local (618) 288-4665  
Fax 618-288-4666

SHEET NO. 2	F.A.I RTE.	SECTION	COUNTY	TOTAL SHEETS	SHEET NO.
OF 3 SHEETS	57/70	(25-3)R	EFFINGHAM	1416	446
			CONTRACT NO. 74296		
FED. ROAD DIST. NO.		ILLINOIS FED. AID PROJECT			

BOX CULVERT DETAILS  
RT STA 2046+35.61  
FAI ROUTE 70 WB (RDWY A)

1:55:50 PM 5/21/2010 C:\culvert\RT 2046+35.61 sheet\rdm