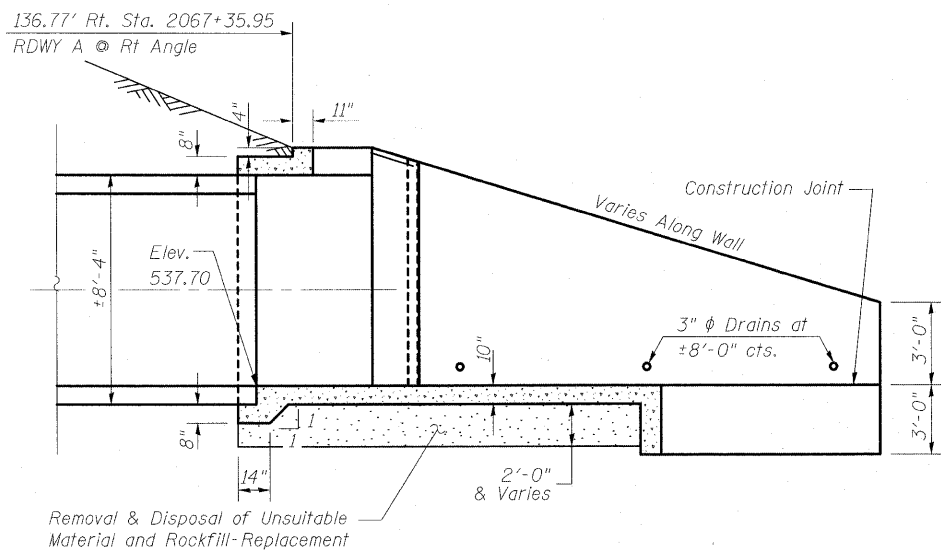
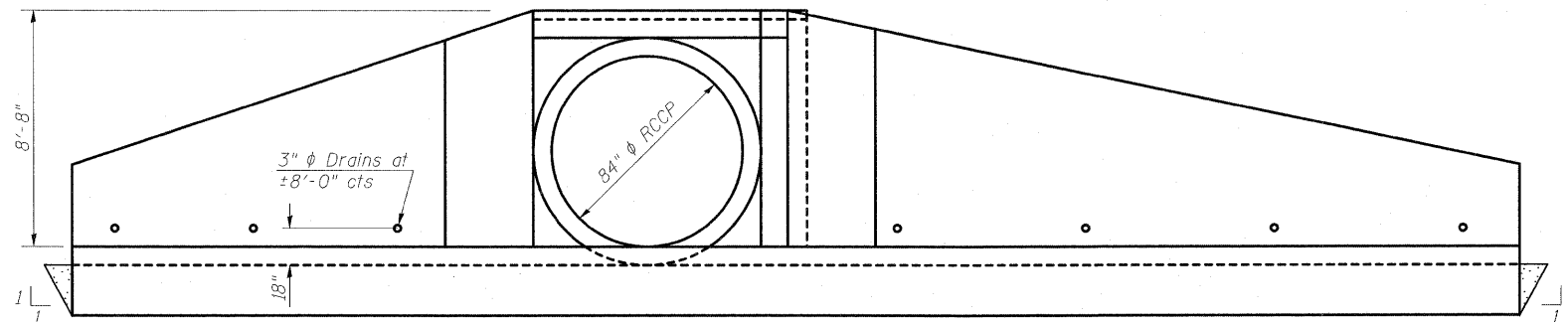


STATE OF ILLINOIS  
DEPARTMENT OF TRANSPORTATION

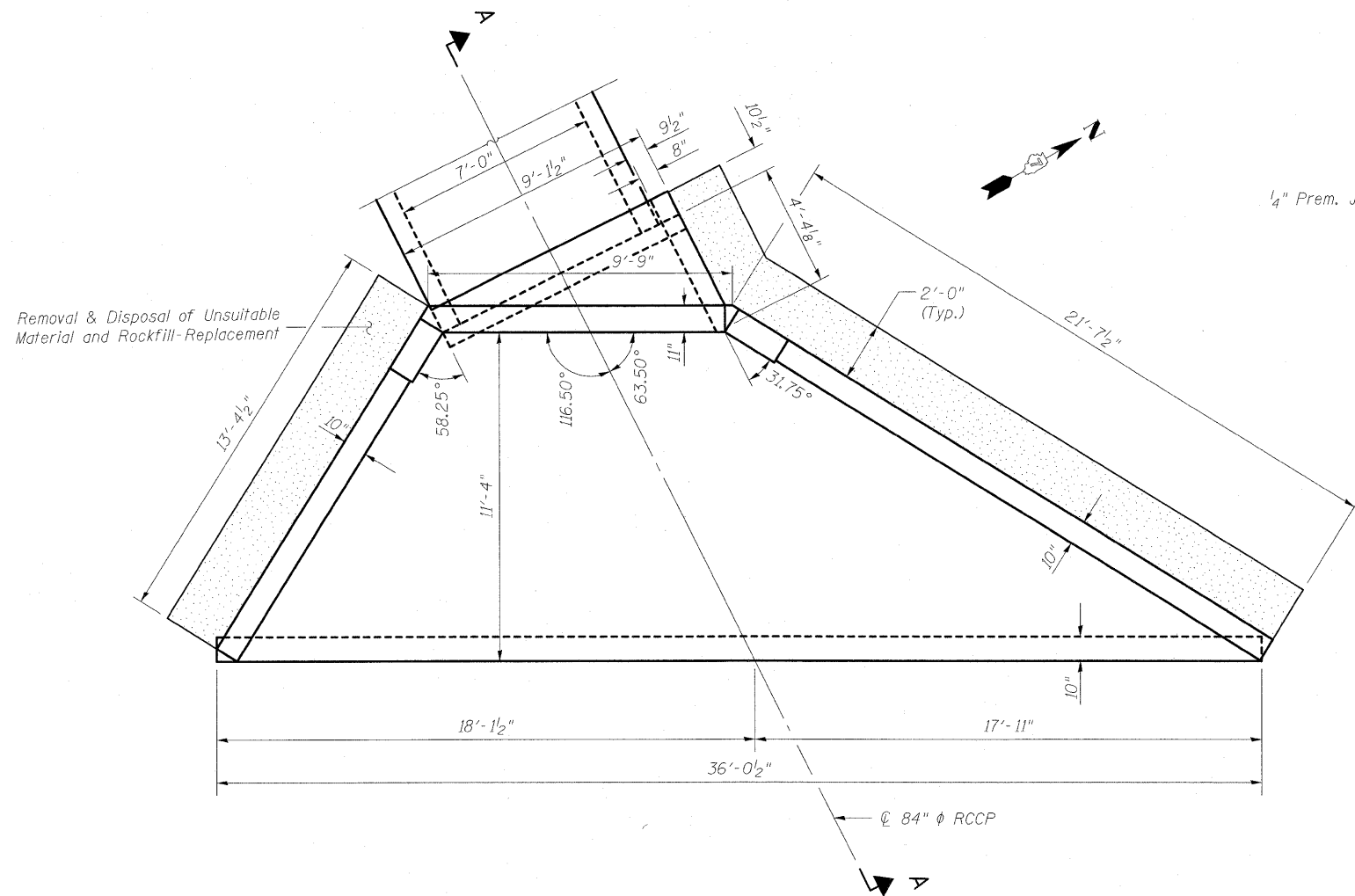


SECTION A-A

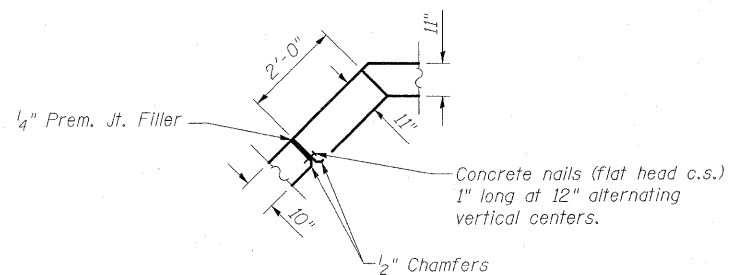


END ELEVATION

Calculated Max. Soil Pressure  
under Box Culvert End Section = 500 psf



PLAN



CORNER DETAIL

GENERAL NOTES

Reinforcement bars shall conform to the requirements of ASTM A 706 Gr 60. See Special Provisions.  
Reinforcement bars designated (E) shall be epoxy coated.  
Build top of headwall parallel to grade line.  
The depth of Removal and Replacement of Unsuitable Materials and Rockfill-Replacement as shown on the plans is estimated.  
The verification of allowable soil bearing pressure underlying the proposed box culvert and wingwall footings shall be verified by a dynamic cone penetration (DCP) test or other acceptable measures as provided by the District Geotechnical and Field Engineers.  
The results of the test must exceed the calculated bearing pressures shown on the plans prior to placement of the Box Culvert End Section or Rockfill-Replacement. Tests failing to exceed the calculated bearing pressures as shown on the plans will require subsurface modification that must be coordinated with the District Geotechnical and Field Engineers.

BILL OF MATERIAL

Item	Unit	Qty.
Removal & Disposal of Unsuitable Material	Cu. Yd.	24
Rockfill-Replacement	Ton	51
Cast-In-Place Reinforced Concrete End Sections 84"	Each	1

PIPE CULVERT DETAILS  
RT STA 2066+58.72  
FAI ROUTE 70 WB (RDWY A)

DESIGNED -	BB
CHECKED -	CJF
DRAWN -	WJS
CHECKED -	CJF



Chadwick J. Fuesting 5/24/2010

Revised Sheet 5/21/10 CJF



Illinois Design Firm Number 184.001670  
**BERNARDIN  
LOCHMUELLER &  
ASSOCIATES, INC.**  
3 Oak Drive  
Maryville, IL 62442-5635  
Local-(618) 293-4655  
Fax 618-293-4656

SHEET NO. 1	F.A.I. RTE. 57/70	SECTION (25-3)R	COUNTY EFFINGHAM	TOTAL SHEETS 1416	SHEET NO. 451
OF 3 SHEETS	CONTRACT NO. 74296				
FED. ROAD DIST. NO.		ILLINOIS		FED. AID PROJECT	