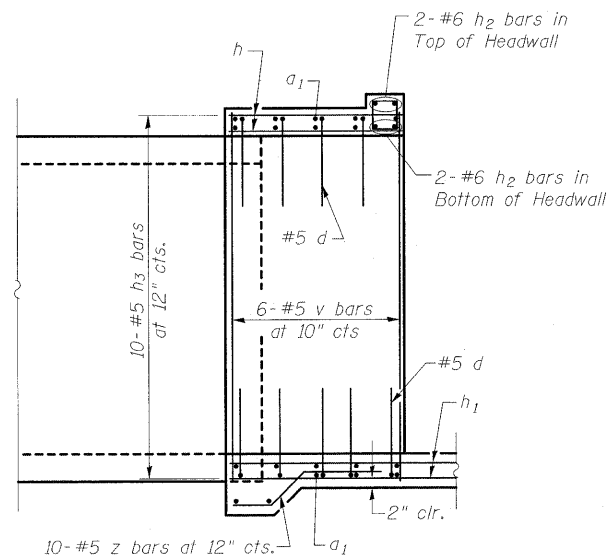
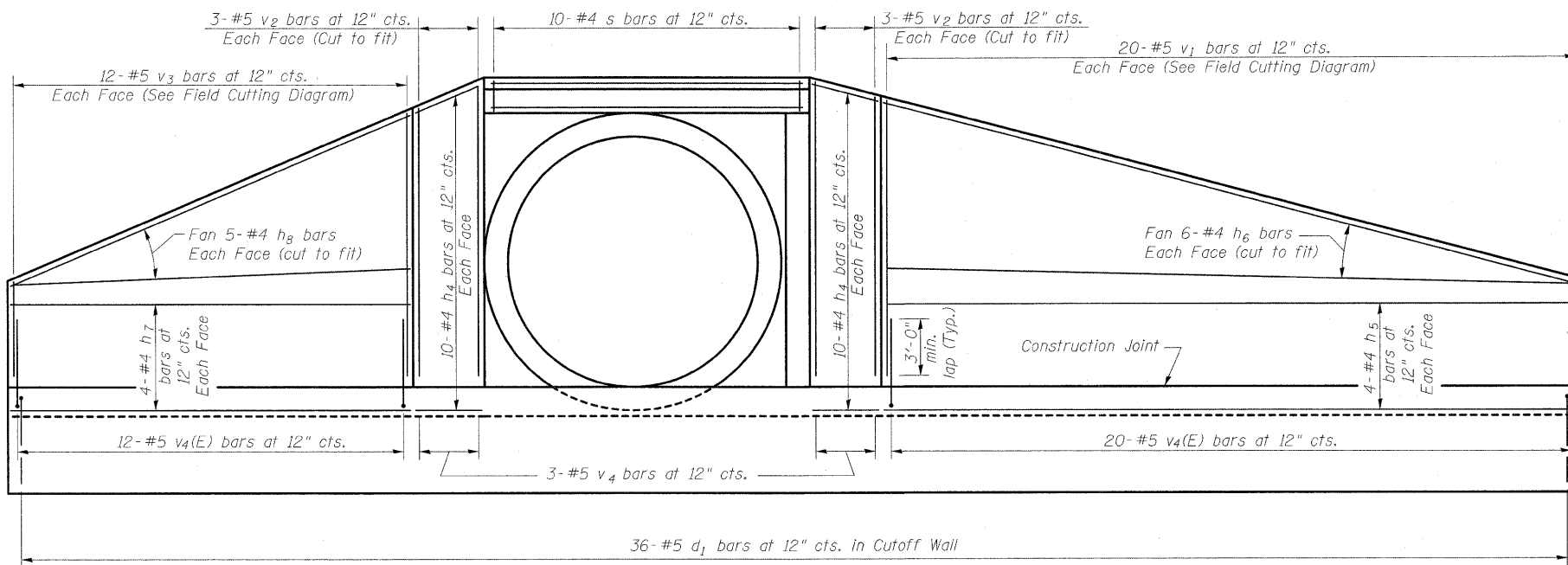


STATE OF ILLINOIS
DEPARTMENT OF TRANSPORTATION

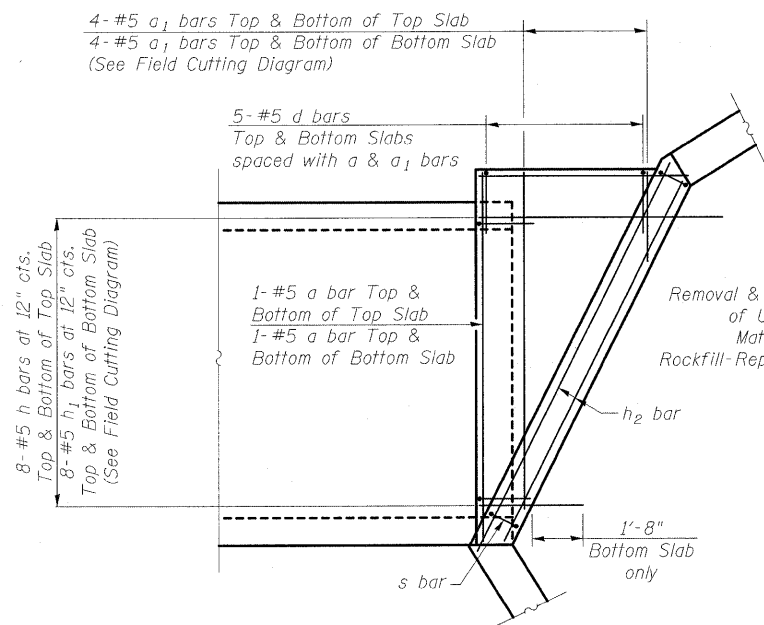


END OF PIPE ELEVATION

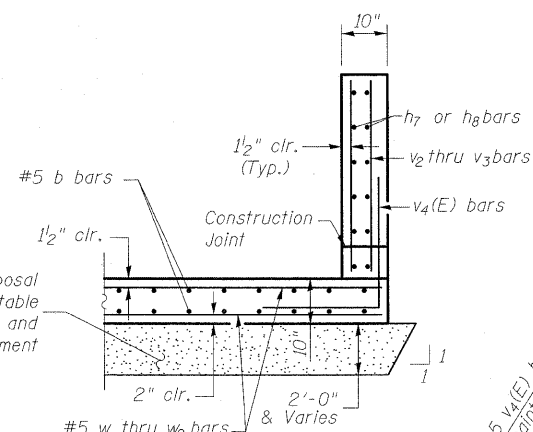


END ELEVATION

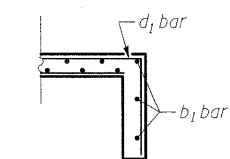
(Showing Wall Reinforcement)



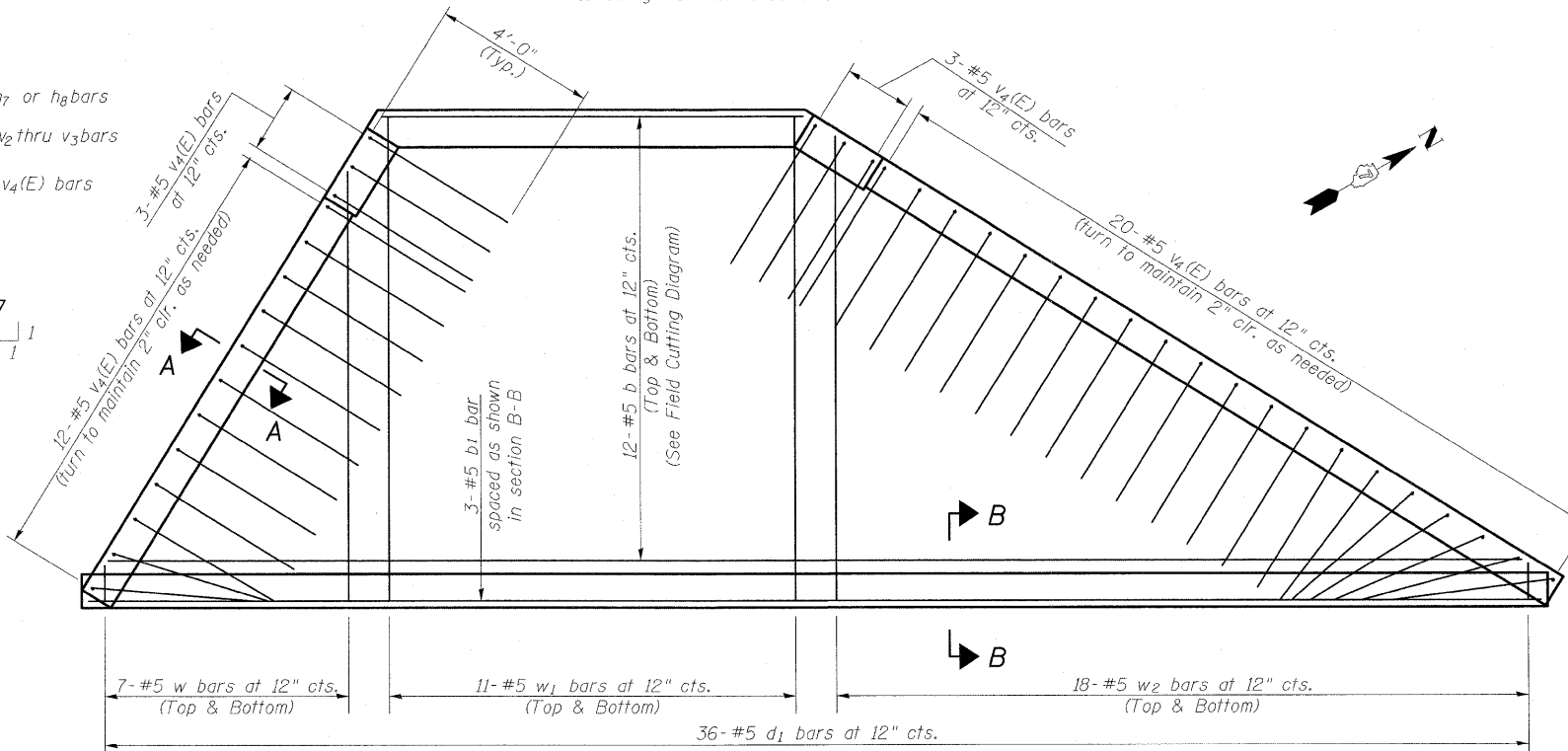
END OF PIPE PLAN



SECTION A-A



SECTION B-B



PLAN

(Showing Slab Reinforcement)

Note:
See sheet 3 of 3 for Bar Bends, Field
Cutting Diagrams and Bill of Materials.

PIPE CULVERT DETAILS
RT STA 2066+58.72
FAI ROUTE 70 WB (RDWY A)

DESIGNED	BB
CHECKED	CJF
DRAWN	WJS
CHECKED	CJF

Revised Sheet 5/21/10 CJF



BERNARDIN
LOCHMUELLER &
ASSOCIATES, INC.

3 Oak Drive
Maryville, IL 62062-5635
Local (618) 398-4065
Fax 618-398-4666

SHEET NO. 2 OF 3 SHEETS	F.A.I RTE.	SECTION	COUNTY	TOTAL SHEETS	SHEET NO.
	57/70	(25-3)R	EFFINGHAM	1416	452
FED. ROAD DIST. NO.			ILLINOIS FED. AID PROJECT		
			CONTRACT NO. 74296		