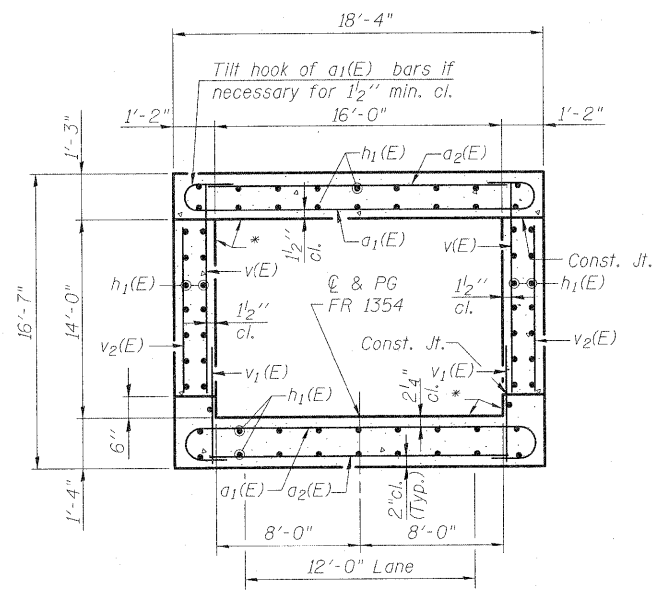


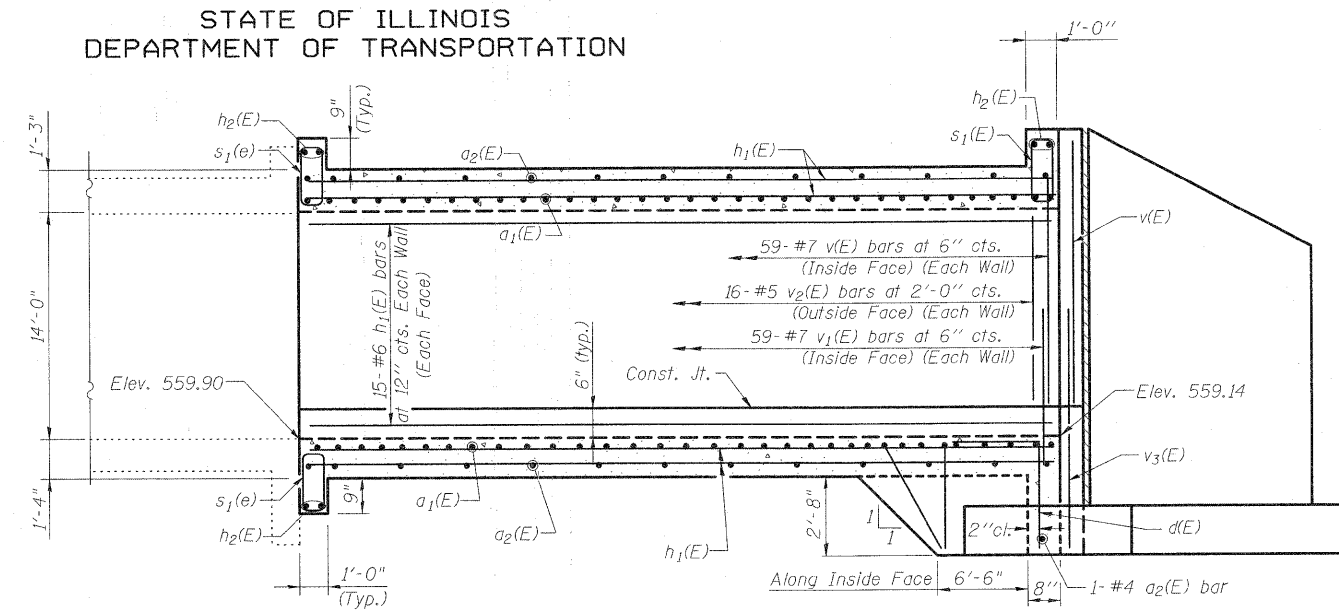
STATE OF ILLINOIS
DEPARTMENT OF TRANSPORTATION



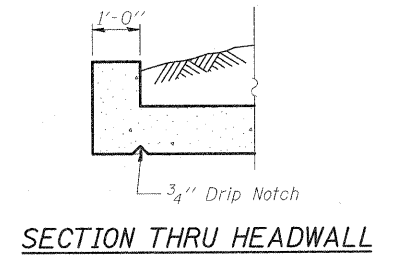
SECTION THRU BARREL EXTENSION

(Looking Upstation)

* Apply Concrete Sealer

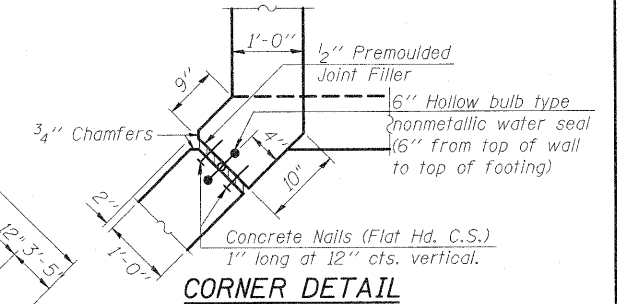


SECTION

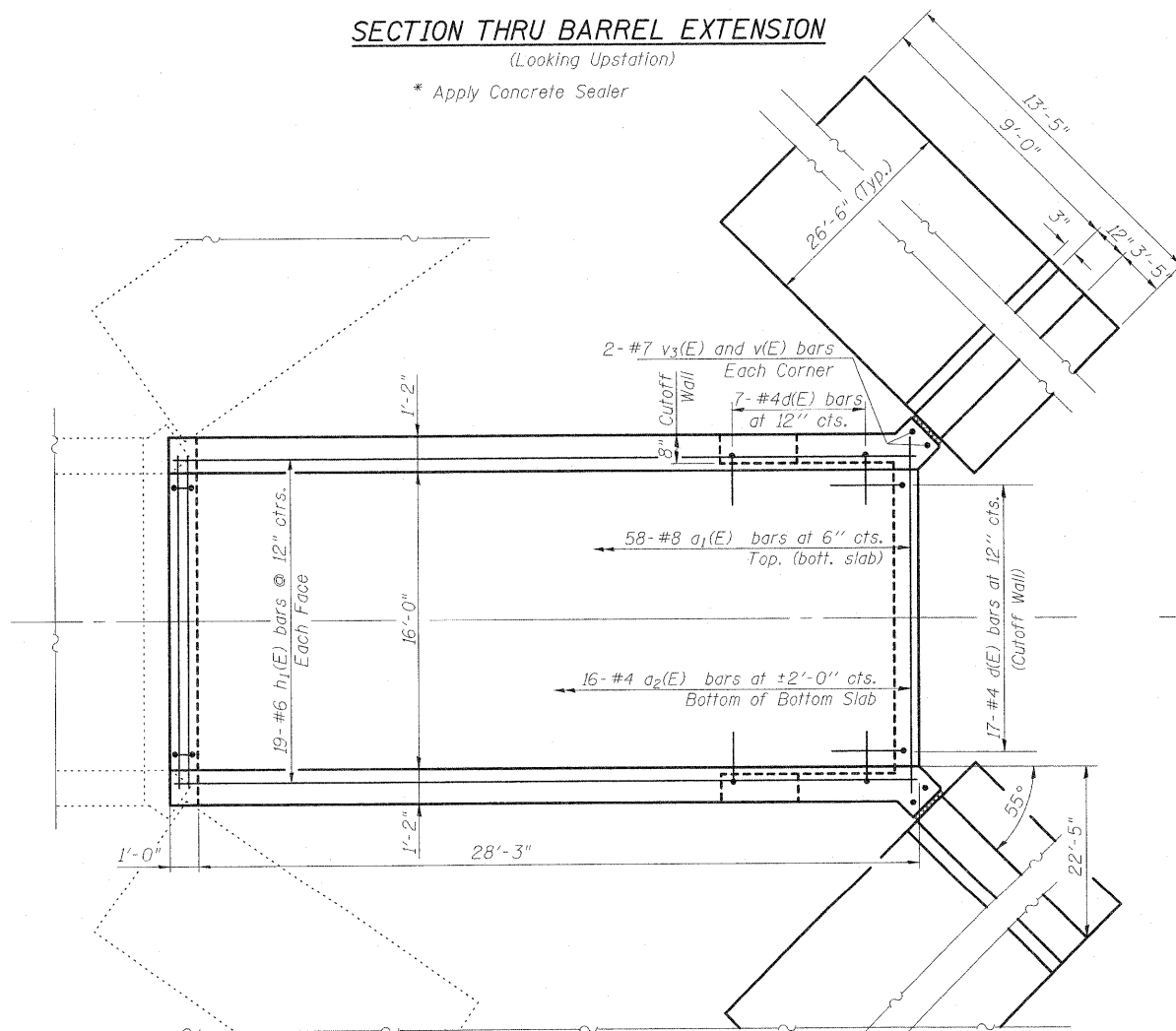


SECTION THRU HEADWALL

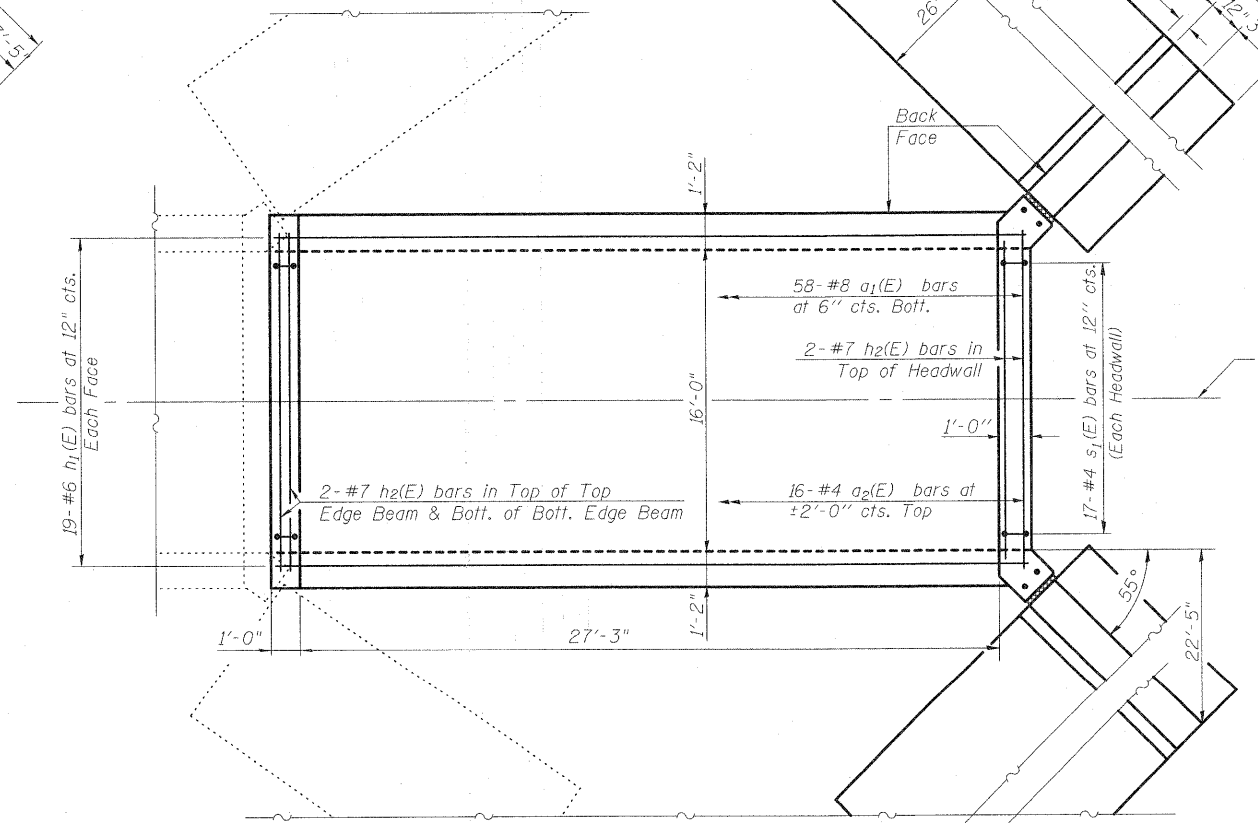
ELEVATION



CORNER DETAIL



BOTTOM SLAB



TOP SLAB

PLAN

Notes:
See Sheets 6 of 8 for
Wingwall Layout and Reinforcement.
For Bill of Materials see Sheet 6 of 8.

**CULVERT DETAILS
STRUCTURE NO. 025-2017**

DESIGNED	B.B.
CHECKED	C.J.F.
DRAWN	W.J.S.
CHECKED	C.J.F. & B.B.



**BERNARDIN
LOCHMUELLER &
ASSOCIATES, INC.**

3 Oak Drive
Maryville, IL 62062-5635
Local (618) 288-4666
Fax 618-288-4666

SHEET NO. 5 8 SHEETS	F.A.I. RTE.	SECTION	COUNTY	TOTAL SHEETS	SHEET NO.
	70	(25-3)BY	EFFINGHAM	1416	463
SN 025-2017			CONTRACT NO. 74296		
FED. ROAD DIST. NO. 7 ILLINOIS FED. AID PROJECT					