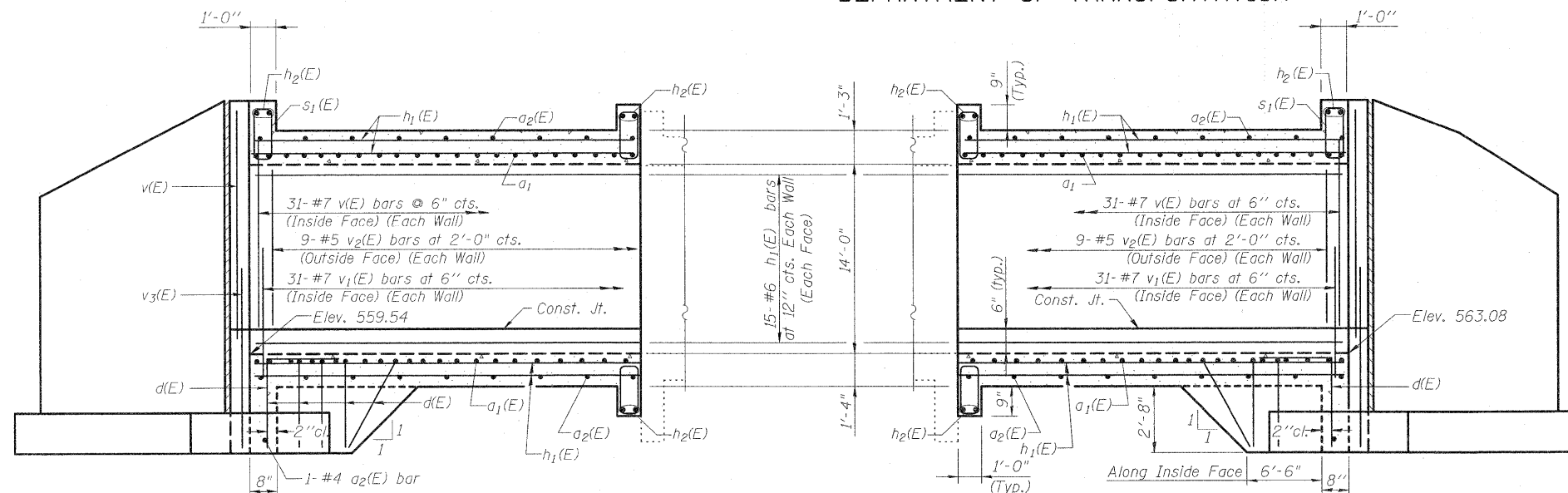
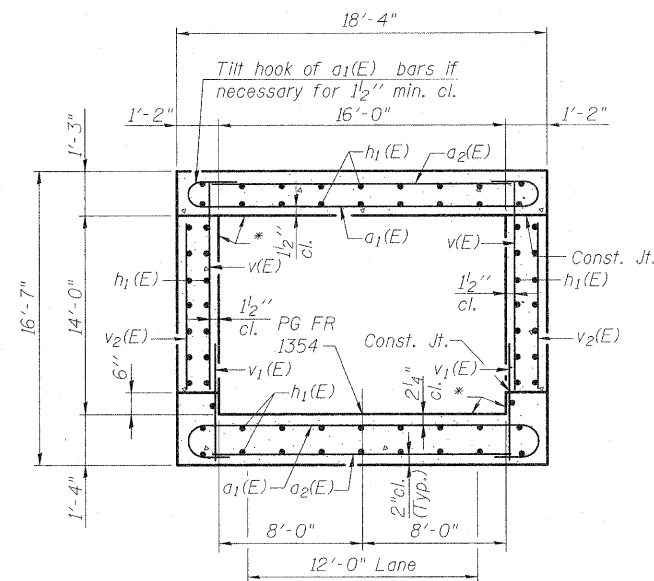


STATE OF ILLINOIS
DEPARTMENT OF TRANSPORTATION



WEST EXTENSION SECTION

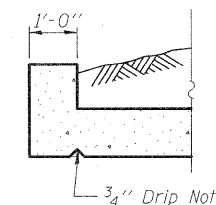
EAST EXTENSION SECTION



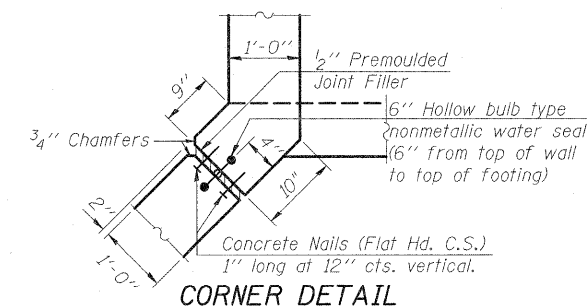
SECTION THRU BARREL EXTENSION

(Looking Upstation)

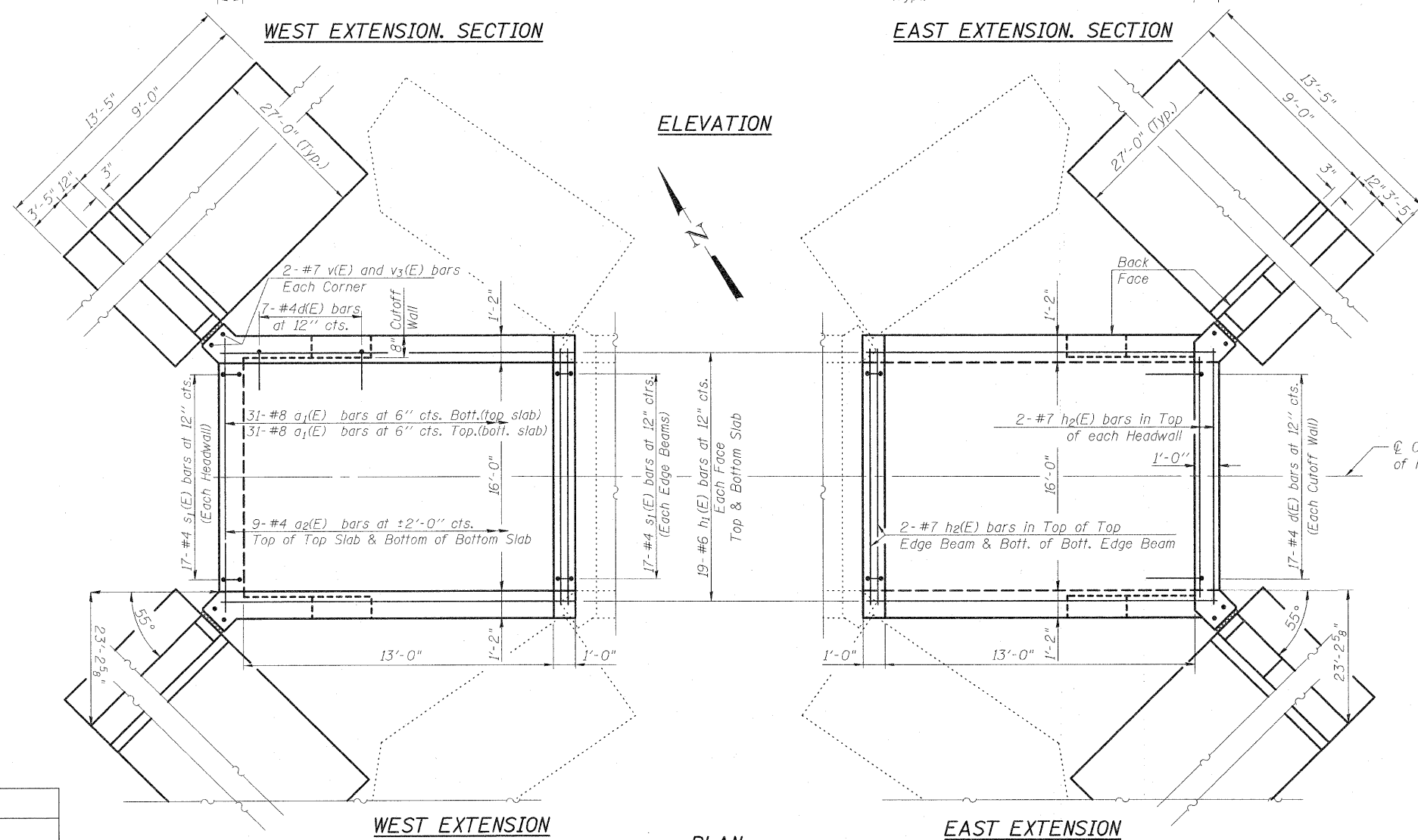
* Apply Concrete Sealer



SECTION THRU HEADWALL



CORNER DETAIL



ELEVATION

WEST EXTENSION

EAST EXTENSION

PLAN

Notes:
Barrel Dimensions and reinforcement are the same for both extensions.
See Sheets 6 and 7 of 9 for Wingwall Layout and Reinforcement.
For Bill of Materials see Sheet 7 of 9.

DESIGNED	B.B.
CHECKED	C.J.F.
DRAWN	J.G.
CHECKED	C.J.F. & B.B.



BERNARDIN
LOCHMUELLER &
ASSOCIATES, INC.

3 Oak Drive
Maryville, IL 62062-5635
Local (618) 288-4666
Fax 618-288-4666

SHEET NO. 5	F.A.I. RTE.	SECTION	COUNTY	TOTAL SHEETS	SHEET NO.
	70	(25-3)BY	EFFINGHAM	1416	471
9 SHEETS	SN 025-2018		CONTRACT NO. 74296		
FED. ROAD DIST. NO. 7 ILLINOIS FED. AID PROJECT					

CULVERT DETAILS
STRUCTURE NO. 025-2018