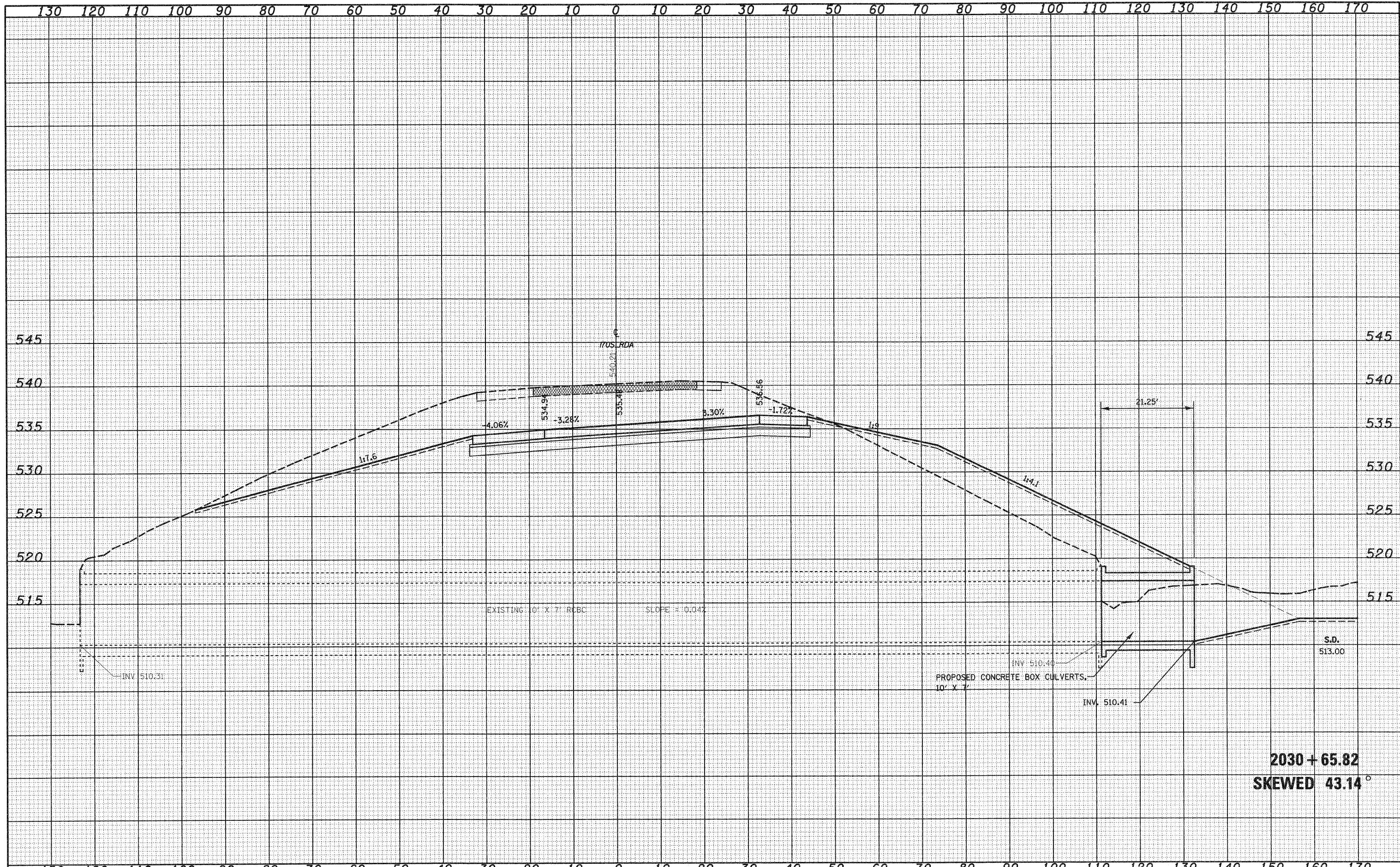


FINAL SURVEY	SURVEYED	BY	DATE
NOTE BOOK	PLOTTED		
NO.	TEMPLATE		
	AREAS CHECKED		

ORIGINAL SURVEY	SURVEYED	BY	DATE
NOTE BOOK	PLOTTED		
NO.	TEMPLATE		
	AREAS CHECKED		



2030 + 65.82
SKEWED 43.14°

FILE NAME =	USER NAME = paul	DESIGNED - JWS	REVISED -	STATE OF ILLINOIS DEPARTMENT OF TRANSPORTATION	CULVERT PROFILES, SOUTH TRI LEVEL ROADWAY A			F.A.I. RTE. 57/70	SECTION (25-3)R	COUNTY EFFINGHAM	TOTAL SHEETS 1416	SHEET NO. 477
S:\Project\03\002\25-3R\Map\15-1\1515sh.culvert.prf\500.dwg	PLOT SCALE = 20,0000' / IN.	DRAWN - LEC	REVISED -		SCALE: 1"=10'	SHEET NO. 2 OF 17	SHEETS	STA. 2030+66.01 TO STA. 2030+66.01	CONTRACT NO. 74296			
	PLOT DATE = 2/11/2010	CHECKED - BRM	REVISED -		FED. ROAD DIST. NO. ILLINOIS FED. AID PROJECT							
		DATE - 2-25-08	REVISED -									