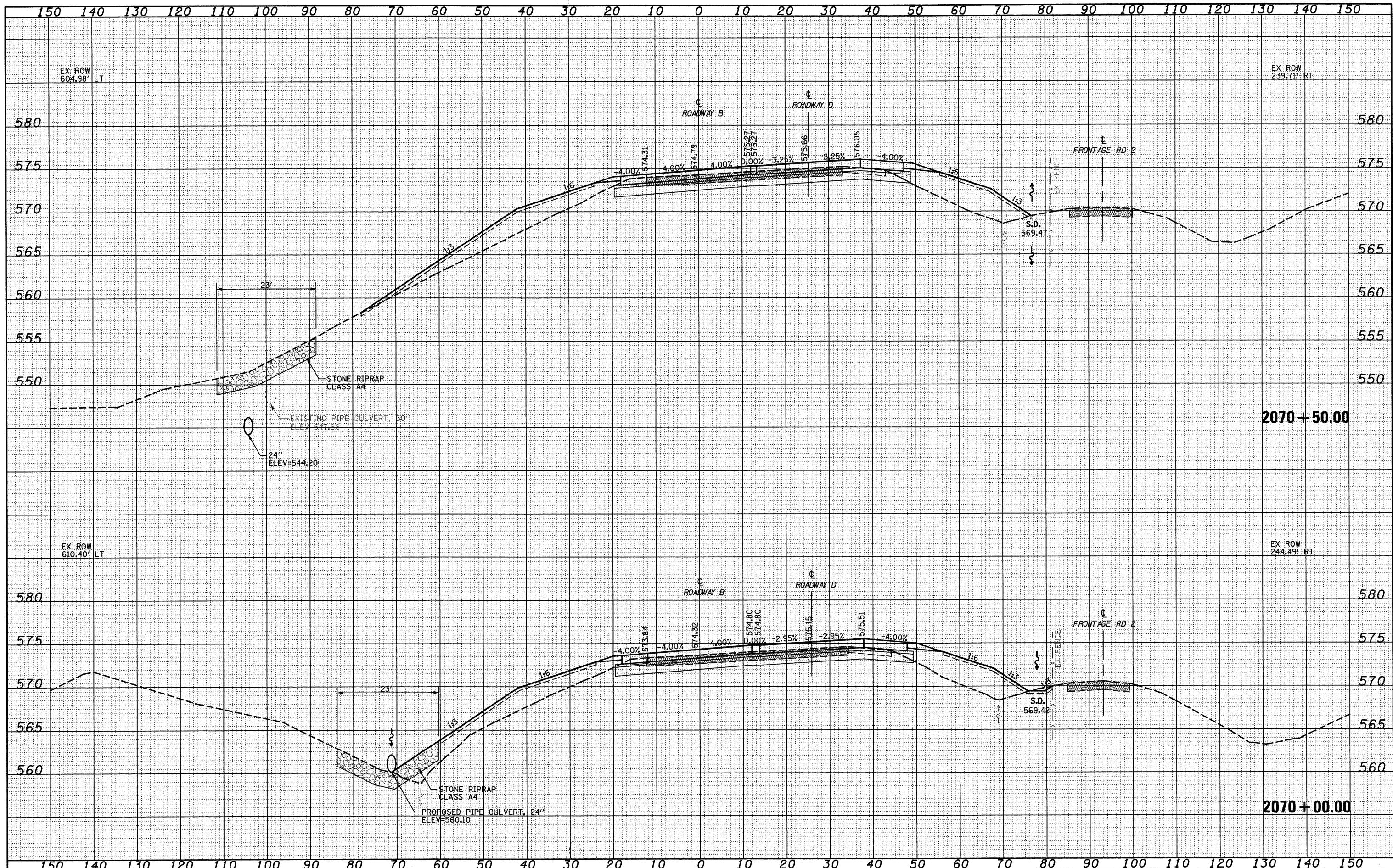


DATE	
BY	
SURVEYED	
PLOTTED	
TEMPLATE	
NOTE BOOK	
AREAS CHECKED	
NO.	

DATE	
BY	
SURVEYED	
PLOTTED	
TEMPLATE	
NOTE BOOK	
AREAS CHECKED	
NO.	



FILE NAME =	USER NAME = lmda	DESIGNED - JWS	REVISED -	STATE OF ILLINOIS DEPARTMENT OF TRANSPORTATION	CROSS SECTIONS SOUTH TRI LEVEL - ROADWAY B	F.A.J. RTE. 57/70	SECTION (25-3R)	COUNTY EFFINGHAM	TOTAL SHEETS 1416	SHEET NO. 571	
PLOT SCALE = 24,00000' / IN.	CHECKED - BRM	DRAWN - LEC	REVISED -			SCALE: 1"=10'	SHEET NO. 77 OF 108 SHEETS	STA. 2070+00.00 TO STA. 2070+50.00	FED. ROAD DIST. NO.	ILLINOIS FED. AID PROJECT	CONTRACT NO. 74296
PLOT DATE = 2/9/2010	DATE - 2-25-08	CHECKED - BRM	REVISED -								
		DATE - 2-25-08	REVISED -								