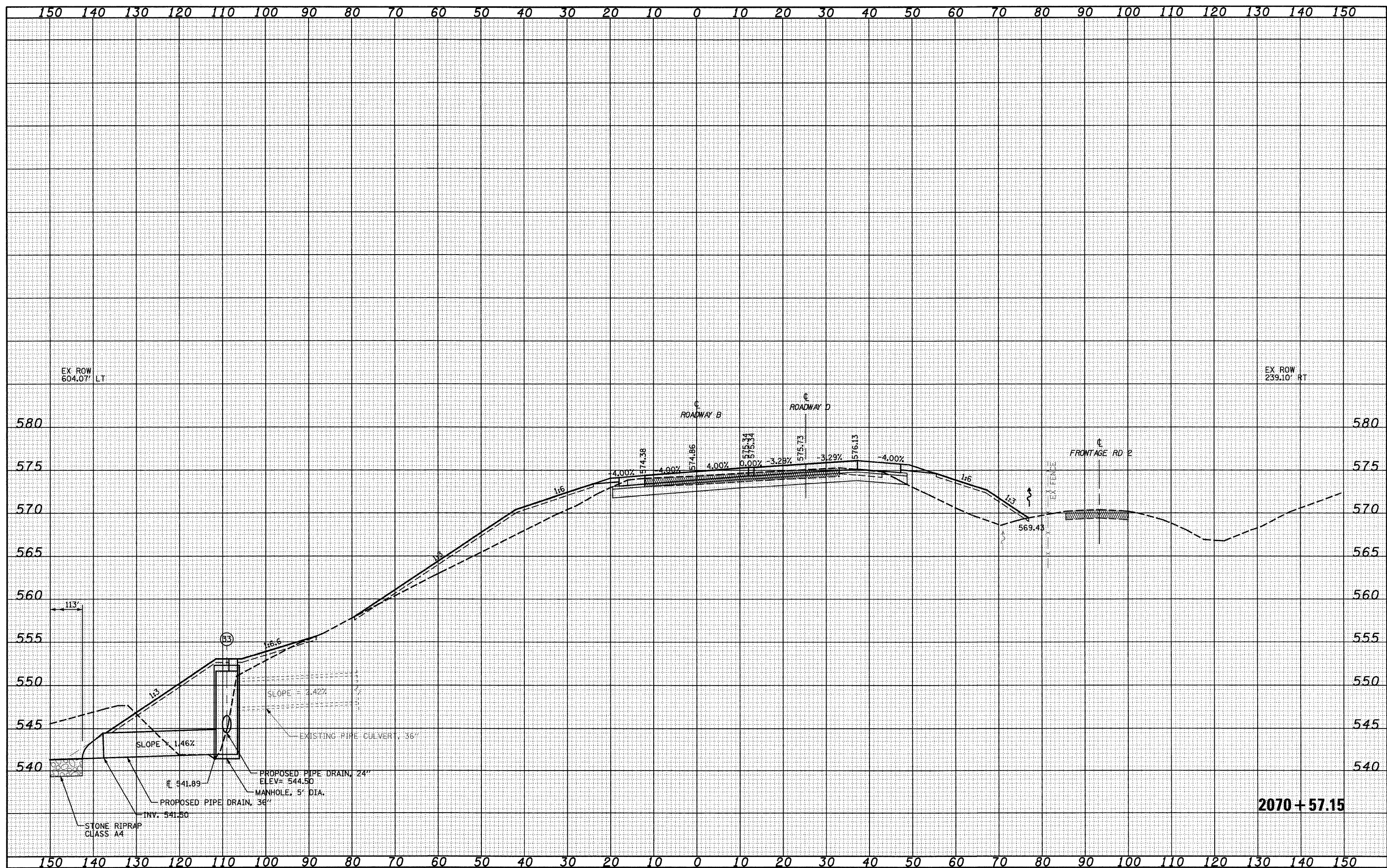


DATE	
BY	
FINAL SURVEY	
SURVEYED	
PLOTTED	
TEMPLATE	
NOTE BOOK	
AREAS	
CHECKED	
NO.	

DATE	
BY	
ORIGINAL SURVEY	
SURVEYED	
PLOTTED	
TEMPLATE	
NOTE BOOK	
AREAS	
CHECKED	
NO.	



2070+57.15

FILE NAME = S:\Projects\102-00072-57-70.dwg
 USER NAME = lrsda

DESIGNED - JWS
 DRAWN - LEC
 CHECKED - BRM
 DATE - 2-25-08

REVISED -
 REVISED -
 REVISED -
 REVISED -

STATE OF ILLINOIS
 DEPARTMENT OF TRANSPORTATION

CROSS SECTIONS SOUTH TRI LEVEL - ROADWAY B

SCALE: 1"=10' SHEET NO. 78 OF 108 SHEETS STA. 2070+57.15 TO STA. 2070+57.15

F.A.I. RTE. 57/70	SECTION (25-3R)	COUNTY EFFINGHAM	TOTAL SHEETS 1416	SHEET NO. 572
CONTRACT NO. 74296				
FED. ROAD DIST. NO. ILLINOIS FED. AID PROJECT				