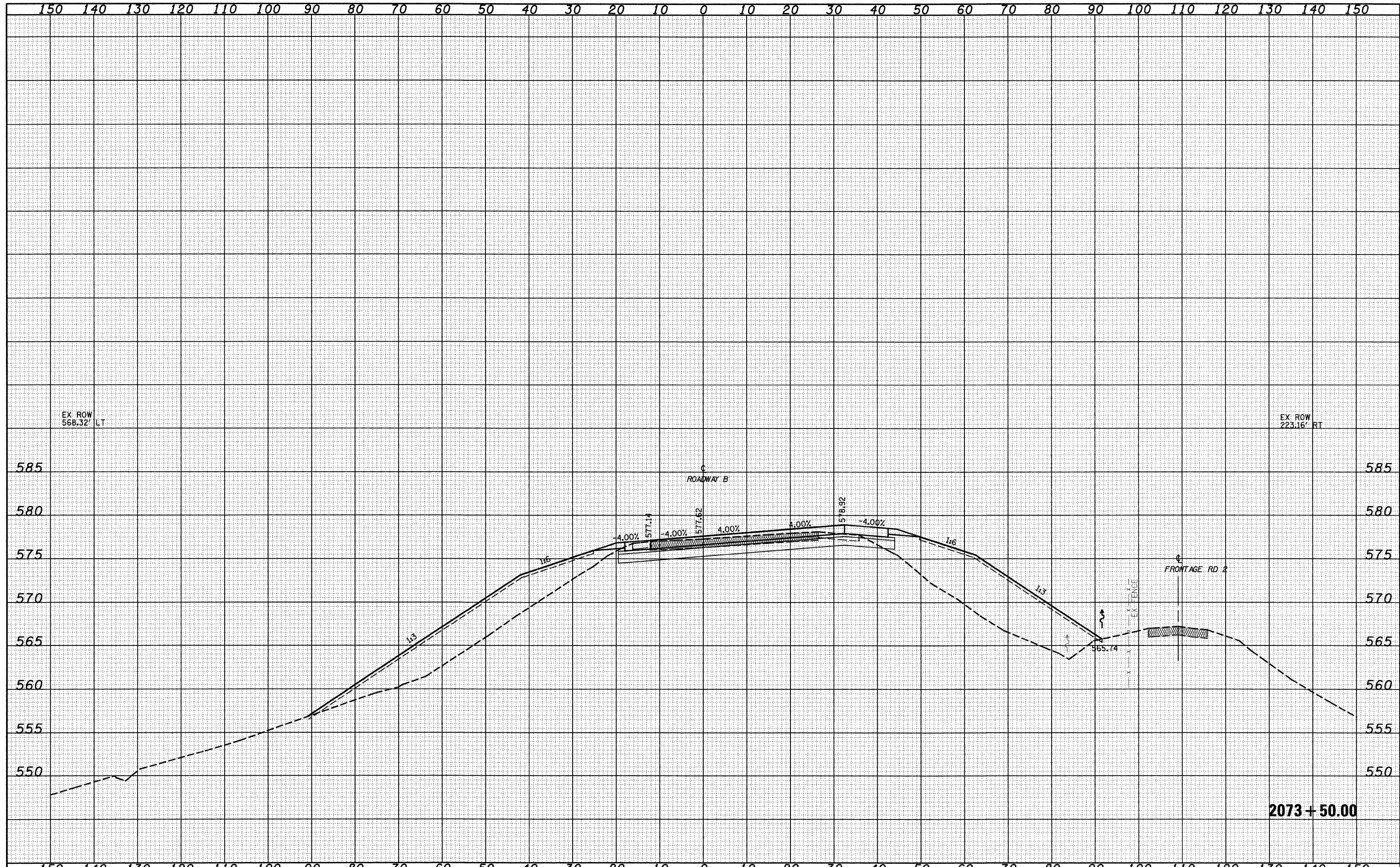


DATE	
BY	
SURVEYED	
PLOTTED	
TEMPLATE	
AREAS	
CHECKED	
NO.	

DATE	
BY	
ORIGINAL SURVEY	
NOTE BOOK	
AREAS	
CHECKED	
NO.	



2073 + 50.00

FILE NAME =	USER NAME = lunde	DESIGNED - JWS	REVISED -	STATE OF ILLINOIS DEPARTMENT OF TRANSPORTATION	CROSS SECTIONS SOUTH TRI LEVEL - ROADWAY B	F.A.I. RTE.	SECTION	COUNTY	TOTAL SHEETS	SHEET NO.	
50\Projects\102-0002\57-7\10\15 Tri\102-0002.dwg	PLOT SCALE = 20.0000' / IN.	DRAWN - LEC	REVISED -			57/70	(25-3)R	EFFINGHAM	1416	578	
PLOT DATE = 2/9/2018	CHECKED - BRM	REVISIED -	REVISIED -			CONTRACT NO. 74296					
DATE - 2-25-08	REVISIED -	REVISIED -	REVISIED -			FED. ROAD DIST. NO. ILLINOIS FED. AID PROJECT					
SCALE: 1"=10'						SHEET NO. 84 OF 108 SHEETS		STA. 2073+50.00 TO STA. 2073+50.00		FED. ROAD DIST. NO. ILLINOIS FED. AID PROJECT	