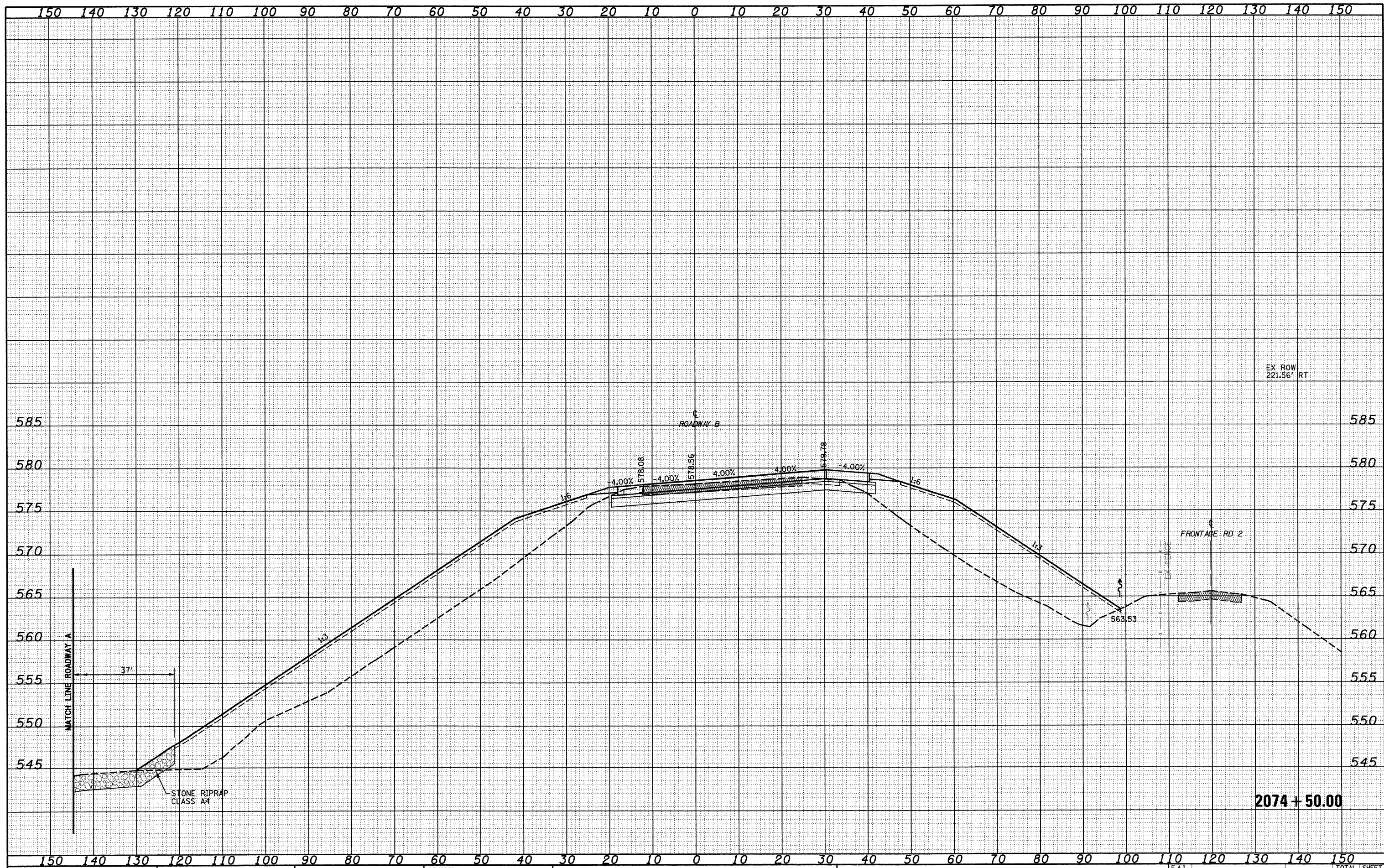


DATE	
BY	
FINAL SURVEY	SURVEYED
NOTE BOOK	PLOTTED
NO.	TEMPLATE
	AREAS CHECKED

DATE	
BY	
ORIGINAL SURVEY	SURVEYED
NOTE BOOK	PLOTTED
NO.	TEMPLATE
	AREAS CHECKED



FILE NAME = S:\Projects\03-0007257-70.dwg
 USER NAME = lmrda

DESIGNED - JWS
 DRAWN - LEC
 CHECKED - BRM
 DATE - 2-25-08

REVISED -
 REVISED -
 REVISED -
 REVISED -

**STATE OF ILLINOIS
 DEPARTMENT OF TRANSPORTATION**

CROSS SECTIONS SOUTH TRI LEVEL - ROADWAY B

F.A.I. RTE.	SECTION	COUNTY	TOTAL SHEETS	SHEET NO.
57/70	(25-3)R	EFFINGHAM	1416	581
SCALE: 1"=10'		SHEET NO. 87 OF 108 SHEETS		STA. 2074+50.00 TO STA. 2074+50.00
FED. ROAD DIST. NO.		ILLINOIS FED. AID PROJECT		

2074 + 50.00