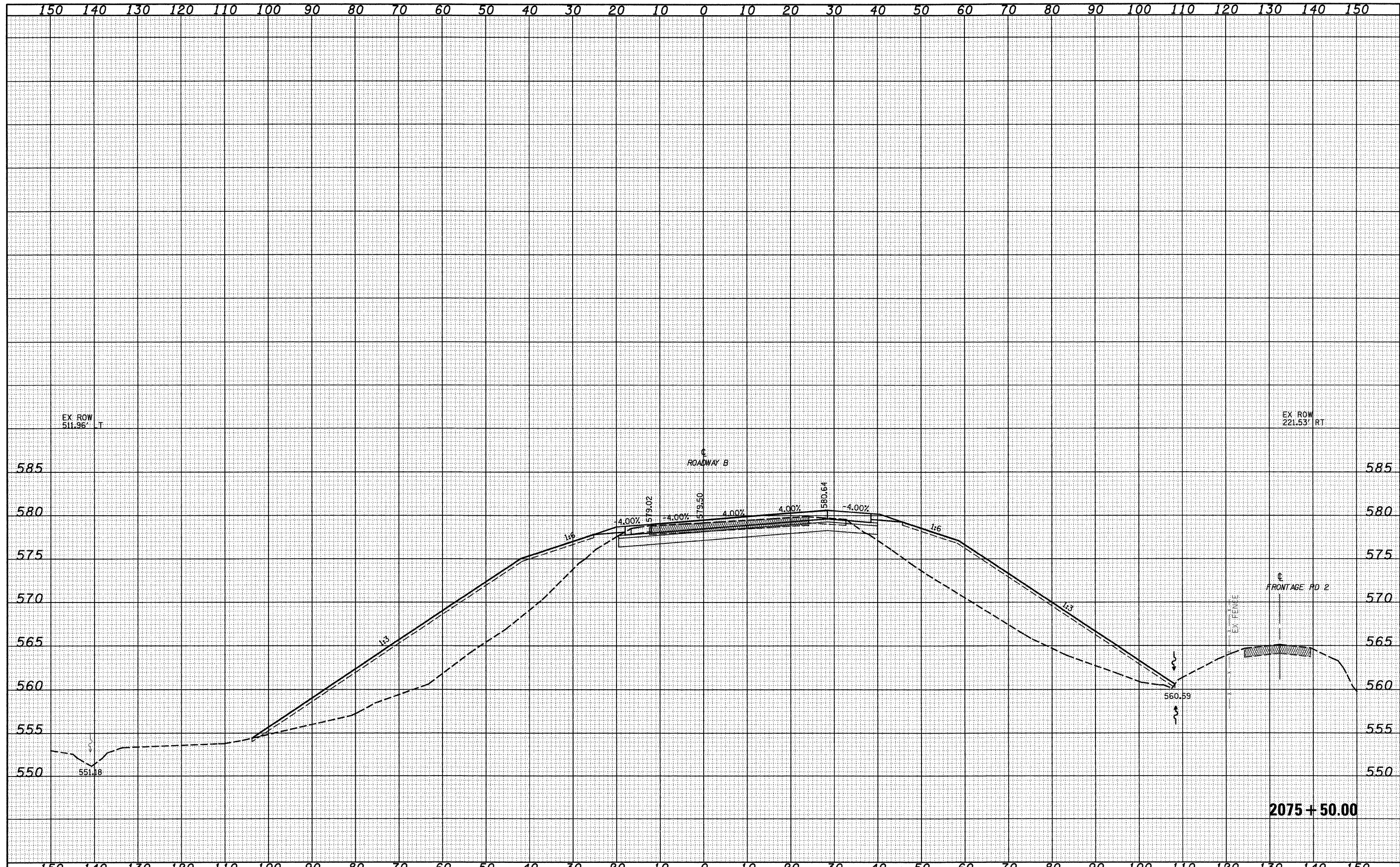


DATE	
BY	
SUBMITTED	
PLOTTED	
TEMPLATE	
AREAS	
CHECKED	
FINAL SURVEY	
NOTE BOOK	
NO.	

DATE	
BY	
SUBMITTED	
PLOTTED	
TEMPLATE	
AREAS	
CHECKED	
ORIGINAL SURVEY	
NOTE BOOK	
NO.	



FILE NAME =	USER NAME = lrside	DESIGNED - JWS	REVISED -	STATE OF ILLINOIS DEPARTMENT OF TRANSPORTATION	CROSS SECTIONS SOUTH TRI LEVEL - ROADWAY B	F.A.I. RTE.	SECTION	COUNTY	TOTAL SHEETS	SHEET NO.	
SAProjects\MS\00072.57-70.dgn		DRAWN - LEC	REVISED -			57/70	(25-3)R	EFFINGHAM	1416	584	
		CHECKED - BRM	REVISED -			SCALE: 1"=10'		SHEET NO. 90 OF 108 SHEETS		STA. 2075+50.00 TO STA. 2075+50.00	
		DATE - 2-25-08	REVISED -			FED. ROAD DIST. NO.		ILLINOIS FED. AID PROJECT		CONTRACT NO. 74296	