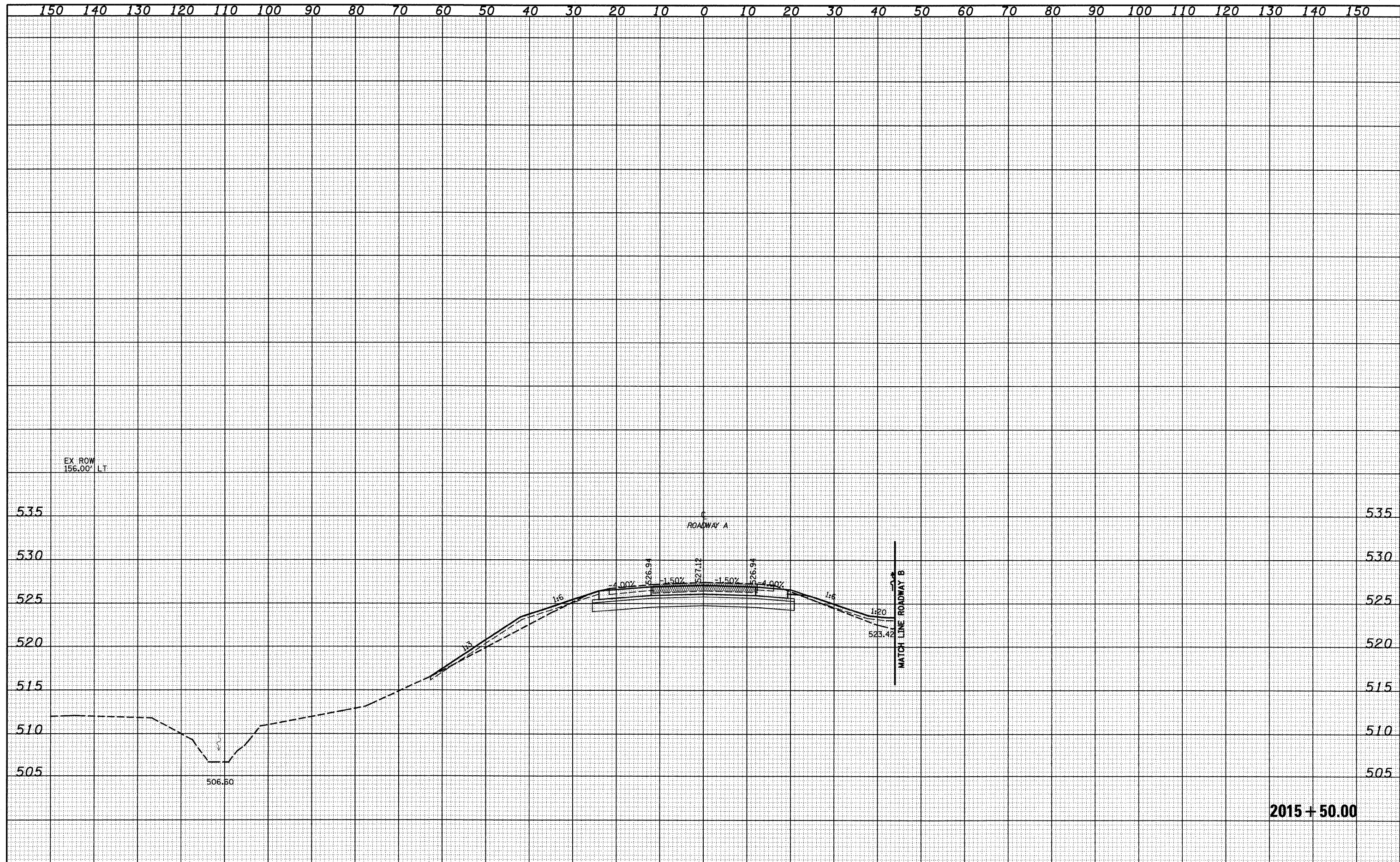


DATE	
BY	
SURVEYED	
PLOTTED	
TEMPLATE	
AREAS	
CHECKED	
NO.	

DATE	
BY	
ORIGINAL	
SURVEY	
PLOTTED	
TEMPLATE	
AREAS	
CHECKED	
NO.	



2015 + 50.00

FILE NAME =	USER NAME = linds	DESIGNED - JWS	REVISED -	<b>STATE OF ILLINOIS</b> <b>DEPARTMENT OF TRANSPORTATION</b>	<b>CROSS SECTIONS SOUTH TRI LEVEL - ROADWAY A</b>	F.A.I. RTE. 57/70	SECTION (25-3)R	COUNTY EFFINGHAM	TOTAL SHEETS 1416	SHEET NO. 618		
20\Projects\102-0002\57-70\dy\5 Trk\Task_170208.dwg	PLLOT SCALE = 20.00000 ' / IN.	DRAWN - LEC	REVISED -			SCALE: 1"=10'	SHEET NO. 2 OF 125 SHEETS	STA. 2015+50.00 TO STA. 2015+50.00	CONTRACT NO. 74296			
	PLLOT DATE = 2/9/2010	CHECKED - BRM	REVISED -			FED. ROAD DIST. NO. ILLINOIS FED. AID PROJECT						
		DATE - 2-25-08	REVISED -									