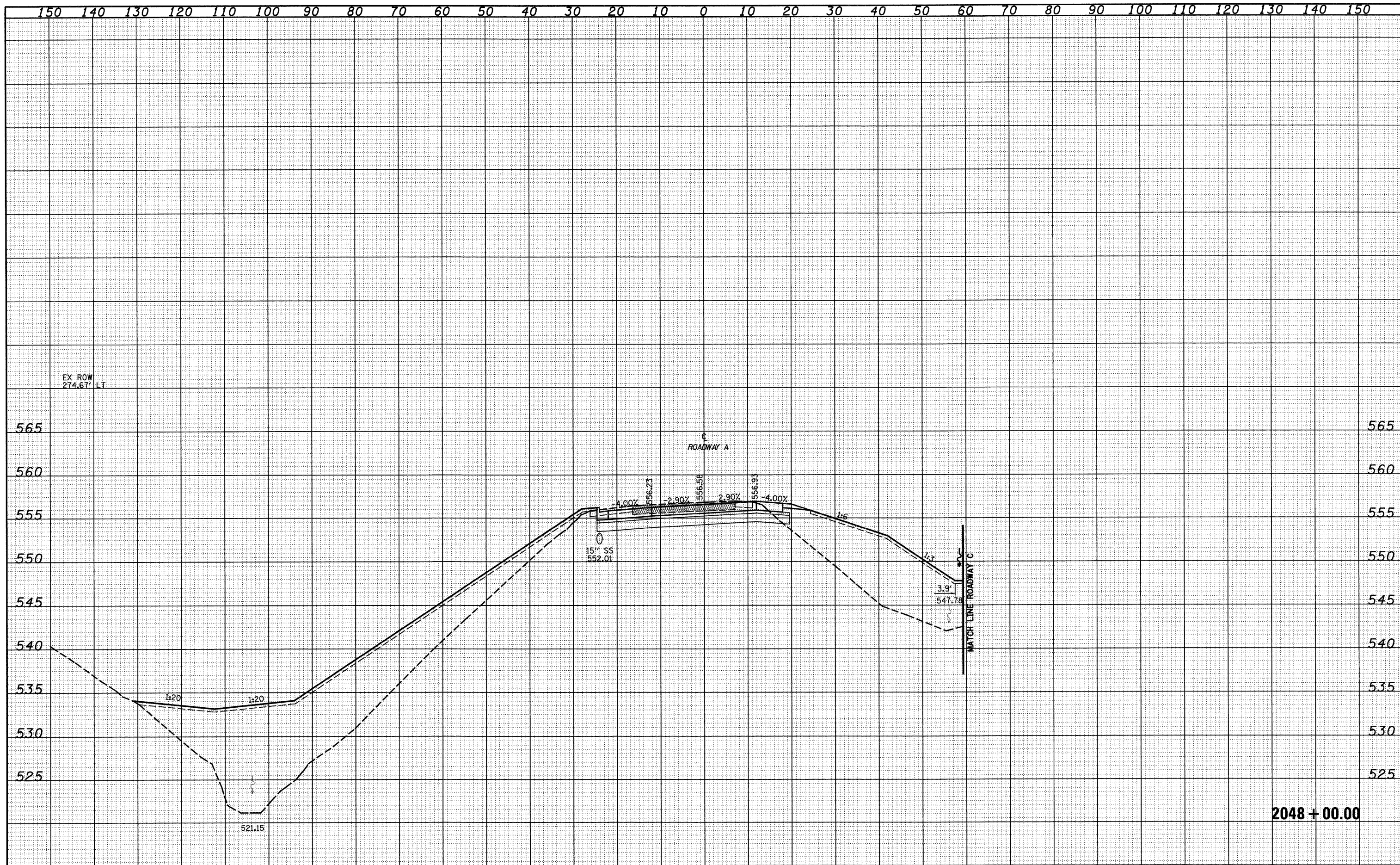


DATE	
BY	
SURVEYED	
PLANNED	
TEMPLATE	
AREAS CHECKED	
FINAL SURVEY	
NOTE BOOK	
NO.	

DATE	
BY	
SURVEYED	
PLANNED	
TEMPLATE	
AREAS CHECKED	
ORIGINAL SURVEY	
NOTE BOOK	
NO.	



2048 + 00.00

FILE NAME =	USER NAME = Linda	DESIGNED - JWS	REVISED -	STATE OF ILLINOIS DEPARTMENT OF TRANSPORTATION	CROSS SECTIONS SOUTH TRI LEVEL - ROADWAY A			F.A.I. RTE.	SECTION	COUNTY	TOTAL SHEETS	SHEET NO.
5:\Projects\100\1007\1007.dwg		DRAWN - LEC	REVISED -		SCALE: 1"=10'	SHEET NO. 51 OF 125 SHEETS	STA. 2048+00.00 TO STA. 2048+00.00	57/70	(25-3)R	EFFINGHAM	1416	667
		CHECKED - BRM	REVISED -		CONTRACT NO. 74296							
		DATE - 2-25-08	REVISED -		FED. ROAD DIST. NO. ILLINOIS FED. AID PROJECT							