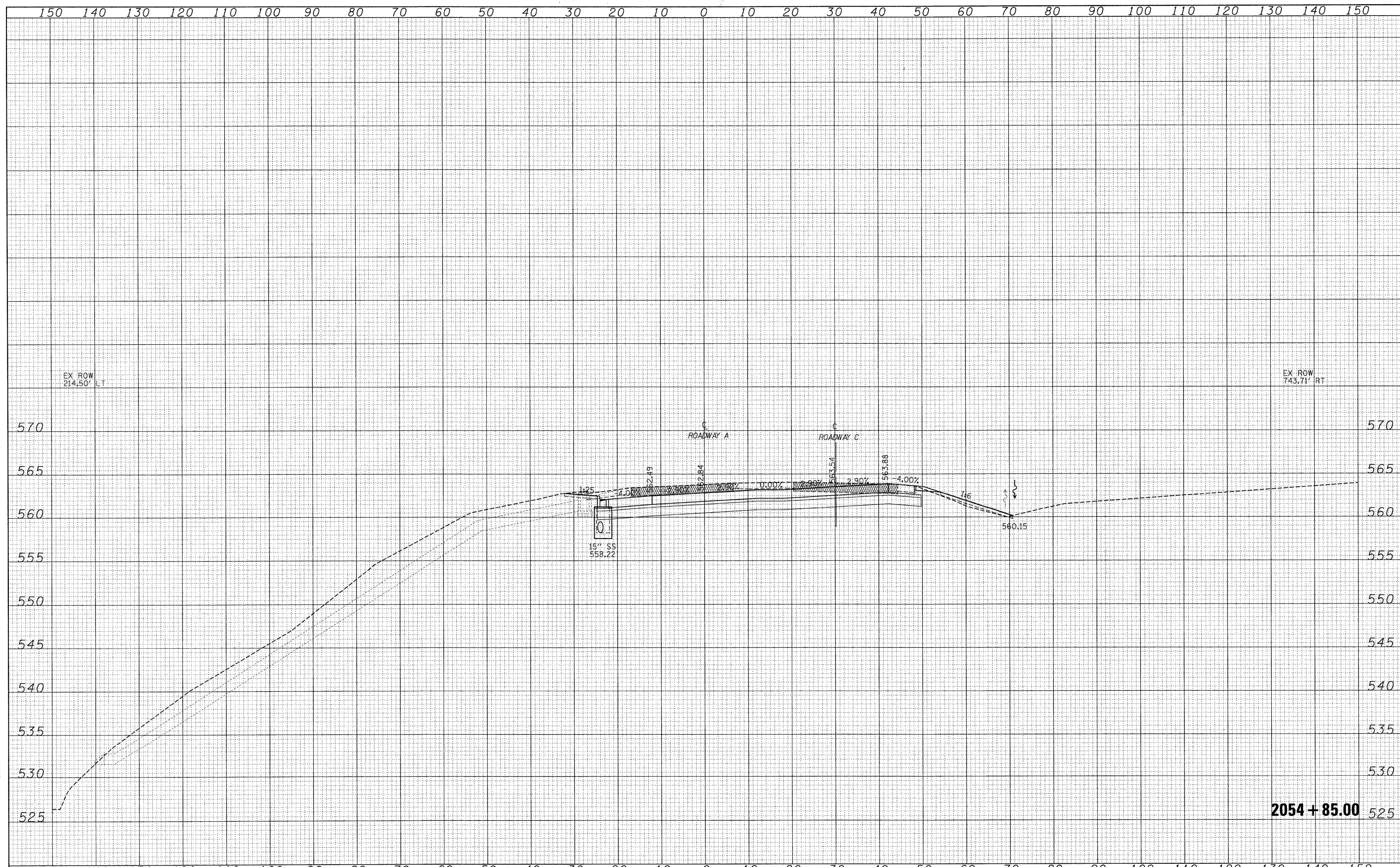


DATE \_\_\_\_\_  
 BY \_\_\_\_\_  
 SURVEYED \_\_\_\_\_  
 PLOTTED \_\_\_\_\_  
 TEMPLATE \_\_\_\_\_  
 NOTE BOOK \_\_\_\_\_  
 AREAS CHECKED \_\_\_\_\_  
 NO. \_\_\_\_\_

DATE \_\_\_\_\_  
 BY \_\_\_\_\_  
 ORIGINAL SURVEY \_\_\_\_\_  
 SURVEYED \_\_\_\_\_  
 PLOTTED \_\_\_\_\_  
 TEMPLATE \_\_\_\_\_  
 NOTE BOOK \_\_\_\_\_  
 AREAS CHECKED \_\_\_\_\_  
 NO. \_\_\_\_\_



FILE NAME = S:\Projects\403-00072-57-70.dgn  
 USER NAME = Linda

DESIGNED - JWS  
 DRAWN - LEC  
 CHECKED - BRM  
 DATE - 2-25-08

REVISED -  
 REVISED -  
 REVISED -  
 REVISED -

**STATE OF ILLINOIS  
 DEPARTMENT OF TRANSPORTATION**

**CROSS SECTIONS SOUTH TRI LEVEL - ROADWAY A**

SCALE: 1"=10' SHEET NO. 67 OF 125 SHEETS STA. 2054+50.00 TO STA. 2054+50.00

F.A.I. RTE. 57/70	SECTION (25-3)R	COUNTY EFFINGHAM	TOTAL SHEETS 1416	SHEET NO. 683
CONTRACT NO. 74296			ILLINOIS FED. AID PROJECT	